

**SEA SCOPING TEMPLATE – COVER NOTE**

Cover Page

**PART 1**

To [SEA.gateway@scotland.gsi.gov.uk](mailto:SEA.gateway@scotland.gsi.gov.uk)  
Or  
SEA Gateway  
Scottish Executive  
Area 1 H (Bridge)  
Victoria quay  
Edinburgh EH

**PART 2**

**An SEA Scoping Report is attached for the plan, programme or strategy entitled**

Aberdeenshire Open Space Strategy

**The Responsible Authority is:**

Aberdeenshire Council

**PART 3**

**Please tick the appropriate box**

**YES** The PPS falls under the scope of Section 5(3) of the Act and required an SEA under the Environmental Assessment (Scotland) Act 2005. **Or**

The PPS falls under the scope of Section 5(4) of the Act and required an SEA under the Environmental Assessment (Scotland) Act 2005. **Or**

The PPS does not require an SEA under the Environmental Assessment (Scotland) Act 2005. However, we wish to carry out an SEA on a voluntary basis. We accept that, as this is voluntary, the statutory 5-week timescale for views from the Consultation Authorities cannot be guaranteed.

## SEA SCOPING TEMPLATE – COVER NOTE

### PART 4

<b>Contact Name</b>	<input type="text" value="Irina Birnie"/>
<b>Job Title</b>	<input type="text" value="Project Co-ordinator - Open Space"/>
<b>Contact Address</b>	<input type="text" value="Aberdeenshire Council"/>
<b>Contact tel no</b>	<input type="text" value="01467 627613"/>
<b>Contact email</b>	<input type="text" value="irina.birnie@aberdeenshire.gov.uk"/>

### PART 5

<b>(Signature electronic signature is acceptable)</b>	<input type="text" value="IBirnie"/>
<b>Date</b>	<input type="text" value="01 December 2008"/>

Cover Page.....	1
Title Page.....	3
1. Introduction.....	4
2. Key Facts about Aberdeenshire Open Space Strategy .....	4
3. Description of the Content of Aberdeenshire Open Space Strategy .....	5
4. Context of Aberdeenshire Open Space Strategy .....	7
4.1 Relationship with other PPS and environmental objectives.....	7
4.2 Relevant aspects of the current state of the environment.....	10
4.3 Likely evolution of the environment without the Open Space Strategy .....	10
4.4 Environmental Characteristics of Areas Likely to be significantly affected .....	11
4.5 Environmental problems.....	11
5 Scope and Level of Detail Proposed for the SEA .....	17
5.1 Alternatives/Options Considered .....	17
5.2 Scoping in/out of SEA issues .....	17
5.3 Framework for assessing environmental effects.....	18
5.4 Cumulative Effect Assessment.....	30
5.5 Proposed Mitigation Measures .....	31
5.6 Monitoring Framework.....	31
5.7 The Appropriate Assessment .....	32
6 Next Steps .....	33
6.1 Proposed Consultation Timescale.....	33
6.2 Anticipated Milestone .....	33
7 Appendices: Open Space Strategy Context, Baseline & Assessments .....	34
Appendix 7.1 - Links to other PPS and objectives .....	34
Appendix 7.2: Baseline data, targets and trends .....	51
Appendix 7.3 Designations .....	100
Appendix 7.4 Summary of Environmental Problems from the Baseline Data. ....	108

## 1. Introduction

The purpose of this Strategic Environmental Assessment Scoping Report is to set out sufficient information on Aberdeenshire Open Space Strategy to enable the Consultation Authorities to form a view on the consultation period and scope/level of detail that will be appropriate for the Environmental Report. This report has been prepared in accordance with the Environmental Assessment (Scotland) Act 2005.

## 2. Key Facts about Aberdeenshire Open Space Strategy

Name of Responsible Authority	Aberdeenshire Council
Title of PPS	Aberdeenshire Open Space Strategy
What prompted the PPS	Required by SPP 11
Subject	Open Space
Period covered by PPS	2009-2014
Frequency of updates	Every 5 years or more frequently if required
Area covered by PPS	Aberdeenshire (excluding Cairngorms National Park)
Purpose and/or objectives of PPS	The purpose of PPS is to provide a coherent framework for managing Aberdeenshire's open and green spaces consistent with the provisions of SP11.
Contact Point	Irina Birnie Project Co-ordinator – Open Space Transportation & Infrastructure Landscape Services Harlaw Way Inverurie AB51 4SG 01467 624827 irina.birnie@aberdeenshire.gov.uk

### 3. Description of the Content of Aberdeenshire Open Space Strategy

#### Strategic Objectives of Aberdeenshire Open Space Strategy 2009-2014

- 1 To improve policies and procedures in relation to the management of open space.
- 2 To promote open space as a major contributor to mental and physical wellbeing.
- 3 To promote open space as the heart of community identity and cohesion
- 4 To improve the landscaping and visual appearance of communities.
- 5 To conserve habitats and biodiversity
- 6 To promote integration between Sustainable Urban Drainage Systems (SUDS) and public open space.
- 7 To develop the resources and structures required to implement the Strategy.

The following table shows how these are translated into objectives and actions for Aberdeenshire Open Space Strategy

**Table 3.1: Objectives and Actions**

<b>OSS 2009-2014 Strategic Objectives</b>		<b>Actions</b>
1	To improve policies and procedures in relation to the management of open space.	1.1 Develop a standards based policy for inclusion within the Local Development Plan.(LDP)
		1.2 Provide justification within LDP settlement statements for detailed application of the policy, based on the findings of the open space audit.
		1.3 Set the framework for masterplans and land allocations
		1.4 Develop robust mechanisms for the funding and maintenance of the open space resource.
		1.5 Review information from Section 75 monitoring spreadsheets (s75 Developer Contributions to communities).
		1.6 Take account of views of local communities in the above.
2	To promote mental and physical wellbeing.	2.1 Provide recreational and exercise opportunities across all age groups.
		2.2 Ensure a range of appropriate options is available to male and female user groups.
		2.3 Ensure a range of open space types is accessible to all residents of Aberdeenshire.
		2.4 Ensure optimum linkage through integration with core paths plan
		2.5 Promote an urban design culture in which greenspace is visually accessible from everyone's' home.
		2.6 Build in capacity for local food production

- |   |  |  |
|---|--|--|
| 3 | To promote community identity and cohesion   | 3.1 Provide gathering places for residents   |
|   |  | 3.2 Build in capacity for local food production  |
|   |  | 3.3 Draw on and develop public art resource  |
|   |  | 3.4 Provide visual and social focus for communities  |
| 4 | To improve the landscaping and visual appearance of communities.   | 4.1 Ensure open space is located for ease of access.   |
|   |  | 4.2 Ensure open space is structured and designed with a clear function.  |
|   |  | 4.3 Ensure open space is designed to encourage maximum usage on an annual basis with consciously designed sheltered spaces.  |
|   |  | 4.4 Soft planting should be primarily based on native plant species and species that support wild life.  |
|   |  | 4.5 Hard landscaping should use materials appropriate to the tradition of the location.  |
|   |  | 4.6 Landscape design should be promoted as a significant element of improving this urban environment of Aberdeenshire's settlements.   |
|   |  | 4.7 Landscape design should be promoted as a significant element of improving the competitive marketability of Aberdeenshire's commercial and industrial areas.  |
|   |  | 4.8 Landscape open space should be designed to form part of an overall interconnected green space network.   |
|   |  | 4.9 Each settlement should have a strategic approach to enhance an existing public space and implementing new green space in order to generally improve amenity value, from gateway, along main access routes and into the heart of each settlement. |
|   |  | 4.10 Landscape design should be fully integrated with other initiatives including public art, urban design and detailed initiatives including signage and lighting.  |
| 5 | To conserve habitats and wildlife  | 5.1 Minimize interventions to natural spaces, in particular on designated sites.   |
|   |  | 5.2 Minimize pesticide use on managed open space. Consider linkages to Biodiversity Action Plans   |
|   |  | 5.3 Minimise use of non-natural surfaces   |
|   |  | 5.4 Maximise potential of SUDS to enhance biodiversity   |
|   |  | 5.5 Define minimum percentage of green infrastructure to be included on development sites (including SUDS).  |
|   |  | 5.6  |
| 6 | To promote integration between the location and management of Sustainable Urban Drainage Systems (SUDS) and the open space resource. | 6.1 Maximize potential of SUDS to incorporate biodiversity on developed sites (see above)  |
|   |  | 6.2 Maximize potential contribution of SUDS as a landscape feature, adding identity to communities.  |
|   |  | 6.3 Encourage use of major applications process to design in and agree maintenance of SUDS at pre-application stage.   |
|   |  | 6.4 Ongoing liaison with partners including Scottish Water to achieve satisfactory outcomes in above respects.   |

- |   |  |     |  |
|---|--|-----|--|
| 7 | To develop the resources and structures required to implement an integrated Strategy | 7.1 | Raise the profile of open space across the Council with reference to National Outcomes and related strategic priorities across the Services. |
|   |  | 7.2 | Increase expectation of open space provision as part of a wider drive to improve the sense of place and design within our communities.       |
|   |  | 7.3 | Target planning contributions to maximum effect in terms of delivering quality, functional open space.                                       |
|   |  | 7.4 | Promote cross-Service working on open space issues.  |

#### 4. Context of Aberdeenshire Open Space Strategy

##### 4.1 Relationship with other PPS and environmental objectives

The Environmental Assessment (Scotland) Act 2005 requires that the Environmental Report includes an outline of the Open Space Strategy’s relationships with other relevant PPS and how environmental protection objectives have been taken into account in the Open Space Strategy preparation. This section covers these issues and describes the policy context within which the Open Space Strategy operates, and the constraints and targets that this context imposes on it. Table 4.1 lists the plans, programmes, strategies and environmental objectives that we propose to analyse for their relationship with Aberdeenshire Open Space Strategy. Appendix 7.1 shows a more detailed analysis.

**Table 4.1. Relevant plans, programmes and strategies & environmental protection objectives, and their relationship with Aberdeenshire Open Space Strategy**

<b>INTERNATIONAL</b>	
1	EC Birds Directive 79/409/EEC
2	EC Habitat Directive 92/43/EEC
3	European Biodiversity Framework
4	European Framework on sustainable development 2001
5	European Spatial Development Perspective
6	Kyoto Protocol (1992)
7	The Johannesburg Declaration on Sustainable Development
8	The Sixth Environmental Action Programme of the European Community 00/2002/EEC
9	Water Framework Directive 2000/60/EC
10	European Landscape Convention
11	EU Thematic Strategy on Soil Protection (COM 2006/231)
<b>NATIONAL</b>	
12	Urban White Paper

13	Climate Change: The UK programme
14	Energy White Paper – Our Energy Future – Creating a low carbon economy
15	The UK’s Shared Framework for Sustainable Development (2005)
16	UK Biodiversity Action Plan
17	Wildlife and Countryside Act 1981 (as amended)
18	Historic Scotland’s Memorandum of Guidance on Listed Buildings and Conservation Areas
19	Meeting the Needs, Priorities, Actions and Targets for Sustainable Development in Scotland (2002)
20	Scottish Executive Policy Statement for Scotland - Designing Places
21	The Conservation (Natural Habitats, &c.) Regulations 1994
22	The Conservation (Natural Habitats, &c.) Amendment (Scotland) Regulations 2007
23	Nature Conservation (Scotland) Act 2004
24	Passed to the Future
25	Disability Discrimination Acts 1995 & 2005
26	Physical Activity Strategy
27	Scottish Historic Environment Policy 1
28	Scottish Historic Environment Policy 2
29	Reaching Higher (Scottish Executive, 2007)
30	Planning Policy for the Protection of Playing Fields ( <b>sportscotland</b> 2007)
31	National Audit of Sports Facilities ( <b>sportscotland</b> 2007)
32	Performance review of Sport in Scotland (Audit Scotland 2008)
33	SPP: Scottish Planning Policy 2008
34	SPP11: Open Space and Physical Activity
35	PAN 44 Fitting new housing development into the Landscape
36	PAN 56 Planning and Noise
37	PAN 58 Environmental Impact Assessment
38	PAN 59 Improving Town Centres
39	PAN 60 Planning for Natural Heritage
40	PAN 61 Planning & sustainable urban drainage
41	PAN 65 Planning and Open Space
42	PAN 67 Housing quality
43	PAN 68 Design Statement
44	PAN 69 Planning & building standards Advice on flooding
45	PAN 74 Affordable Housing
46	PAN 76 New residential streets
47	PAN 77 Designing safer places
48	PAN 78 Inclusive Design
49	Land Reform (Scotland) Act 2003



50	Scotland's Sustainable Development Strategy, 2005
51	Protection of Badgers Act 1992
52	Healthy Eating, Active Living: An Action Plan to Improve Diet, increase Physical Activity and Tackling Obesity (June 2008)
53	Health Impact Assessment of Greenspace – A Guide
54	UK Pesticides Strategy: A Strategy for the Sustainable use of Plant Protection Products
	<b>REGIONAL</b>
55	Building on Energy: The Economic Action Plan for Aberdeen City and Shire
56	Joint Health Improvement Plan
57	North East of Scotland Local Biodiversity Action Plan
58	North East Scotland Together Aberdeen & Aberdeenshire Structure Plan 2001-2016
	<b>LOCAL</b>
59	Aberdeenshire Community Plan
60	Aberdeenshire Local Plan
61	Aberdeenshire Parks and Open Space Strategy 2006
62	Aberdeenshire Local Transport Strategy
63	Aberdeenshire Landscape Character Assessment
64	Aberdeenshire Economic Development Priorities
65	Aberdeenshire Council Sustainability Charter 2007-2010
66	Aberdeenshire Council Carbon Management Programme 2007
67	Aberdeenshire Council Core Paths Plan (draft)
68	Aberdeenshire Council Pitches Strategy (draft report July 2008)
69	Aberdeenshire Council Sports and Active Lifestyles Strategy 2005-2008

From the analysis of the relevant plans, programmes and environmental protection objectives, the key points arising from this analysis are that Aberdeenshire Open Space Strategy should:

- Protect and promote the physical and mental wellbeing of human beings especially those living in towns and cities
- Avoid adverse impacts on statutory and non-statutory protected sites for natural heritage interests i.e. habitats, species, earth science interests and landscape interests e.g.
  - Internationally important Special Areas of Conservation (SACs) and Special Protection Areas (SPAs) designated under the terms of the Conservation Regulations 1994
  - Nationally important Sites of Special Scientific Interest (SSSIs) notified under the terms of the Wildlife and Countryside Act 1981
  - Nationally important areas for landscape and visual amenity ie National Scenic Areas and Cairngorms National Park
  - Regionally important wildlife and landscape sites i.e. Sites of Interests to Natural Science (SINS), Areas of Landscape Value (ALVs).

- Locally important wildlife sites ie Local Nature Reserves (LNRs)
- Ensure compliance with statutory provisions for statutory protected species and with regional biodiversity plans e.g.
  - EPS (e.g. otters and bats), Wildlife and Countryside Act schedule 1 species (e.g. golden eagle),
  - Wildlife and Countryside Act schedule 5 species (eg red squirrel and water vole),
  - the Protection of Badgers Act,
  - and with objectives of North East Scotland Biodiversity Action Plan (eg aspen hover fly and wych elm)
- Promote biodiversity, maintain and restore natural habitats and habitat networks.
- Maintain and support landscape character and local distinctiveness.
- Promote the provision of access links to adjacent access routes eg core path network, or existing footpaths
- Promote sustainable use of water and mitigate the effects of floods and droughts;
- Encourage the promotion of sustainable communities that focus on the sustainable use of natural resources;
- Support strategies that help to limit or reduce the emissions of greenhouse gases;
- Support strategies that help to limit or reduce the emissions of pollutants;
- Promote good design, safe environment, clean environment and good quality services;
- Promote sustainable alternatives to car and reduce congestion traffic pollution through the location of buildings;
- Promote economic growth, social Inclusion, environmental improvement, health and safety;
- Promote strategies that do not degrade the coastal environment;
- Promote the economy, support the community and the public service;
- Set a framework for development consents for major housing developments.
- Help to promote protect and, where appropriate, enhance the historic environment
- Seek to promote watercourses as valuable landscape features and wildlife habitats
- Ensure that the water quality and good ecological status of the Water Framework Directive are maintained

## **4.2 Relevant aspects of the current state of the environment**

The Environmental Assessment (Scotland) Act 2005 Schedule 3 requires that the Environmental Report includes a description of the relevant aspects of the current state of the environment and the likely evolution thereof without implementation of the Open Space Strategy, and the environmental characteristics of areas likely to be significantly affected.

This section aims to describe the environmental context within which the Open Space Strategy operates and the constraints and targets that this context imposes on the Open Space Strategy. Appendix 7.2 below summarises the data collected, the sources and the constraints.

## **4.3 Likely evolution of the environment without the Open Space Strategy**

Without Aberdeenshire Open Space Strategy it is considered that the likely future changes to the area will include:

- Aberdeenshire Council would not be in the position to ensure the delivery of a range of fit for purpose open spaces.
- Adverse effects on mental and physical health of communities.
- A lack of community identity and cohesion, with associated rise in anti-social behaviour.
- Continued loss of habitats and species in urban areas.
- Poor quality of landscape setting of towns and villages; unattractive internal appearance.
- Negative impacts on local economy
- Rise in number of poorly located and badly maintained SUDS
- Less targeted use of developer contributions to enhance local environments
- Ongoing issues of maintenance, in relation to both new and existing open space.

#### **4.4 Environmental Characteristics of Areas Likely to be significantly affected**

In the light of the baseline and problems identified for the Open Space Strategy, the environmental characteristics of areas likely to be significantly affected are summarised at Appendix 7.3 (Figures 7.3.1-3 and Tables 7.3.1-2).

Significant issues relating to each SEA topic have been identified in Table 4.2: Environmental Problems.

#### **4.5 Environmental problems**

The Environmental Assessment (Scotland) Act 2005 requires that the Environmental Report should include a description of existing environmental problems, in particular those relating to any areas of particular environmental importance. The purpose of this section is to explain how existing environmental problems will affect or be affected by Aberdeenshire Open Space Strategy and whether the Strategy is likely to aggravate, reduce or otherwise affect existing environmental problems.

Environmental problems were identified through discussions with officers from Aberdeenshire Council and analysis of the baseline data. Relevant environmental problems are summarised in Table 4.2.

Environmental problems identified through the analysis of baseline data are listed at Appendix 7.4. Most of these problems are being addressed through the Aberdeen City and Shire Structure Plan, Aberdeenshire Towns Housing Strategy, Aberdeenshire Economic Development Priorities and Aberdeenshire Core Paths Plan. The remaining issues relevant to this Strategy are those summarised in the table below.

**Table 4.2: Environment Problems relevant to the Open Space Strategy**

SEA Topic	Significant environmental problems	Supporting Data	Implication for Open Space Strategy
Air & Climatic factors	<ul style="list-style-type: none"> <li>• Users may opt to reach OS facilities using private motorised access, leading to a reduction of air quality and increase in congestion.</li> <li>• Construction of facilities and surfacing may use materials and products high in embodied CO2, leading to indirect increases in carbon emissions.</li> <li>• Use of pesticides high in embodied CO2 may have knock on effect on carbon emissions.</li> <li>• Provision of accessible fit for purpose open space in settlements may work against government requirement for 'efficient use of land.'</li> <li>• Some types of recreation of sport may have a greater ecological/carbon footprint than others</li> </ul>	<ul style="list-style-type: none"> <li>• Aberdeenshire Council (2004 &amp; 2005) <i>Local Air Quality Management Progress Report</i></li> <li>• Scottish Executive (2005) <i>Indicators of Sustainable Development for Scotland: Progress Report 2005</i></li> <li>• Best Foot Forward (2006) <i>Domestic Carbon Dioxide Emissions for Selected Cities</i>, British Gas <a href="http://www.britishgasne.ws.co.uk/managed_content/files/pdf/greenCity.pdf">http://www.britishgasne.ws.co.uk/managed_content/files/pdf/greenCity.pdf</a></li> <li>• DEFRA (2005) <i>Greenhouse Gas Inventories for England, Scotland, Wales and Northern Ireland: 1990 – 2003</i>, National Environmental Technology Centre</li> </ul>	<p>Open Space Strategy should discourage dependence on fossil fuels</p> <p>Open Space Strategy should contain measures to minimise direct and indirect CO2 emissions</p> <p>The implementation of the open space strategy should minimise ecological and carbon footprints</p>

Water	<ul style="list-style-type: none"> <li>• Recreational and sporting use of open spaces around watercourses could degrade water quality.</li> <li>• Poor design and maintenance of SUDS in developing and managing open space facilities could exacerbate flooding and pollution problems.</li> <li>• Run-off from pesticides effecting water quality.</li> <li>• Increased need to abstract water for the development of sporting use of open space facilities</li> </ul>	<ul style="list-style-type: none"> <li>• Aberdeen and Aberdeenshire Councils (2006) <i>Topic Paper: Strategic Flooding Issues</i></li> <li>• Centre for Hydrology and Ecology (River Flow – gauging stations) (2004): <a href="http://www.nwl.ac.uk/ih/nrfa/station_summaries/op/SEPA-north_map.html">http://www.nwl.ac.uk/ih/nrfa/station_summaries/op/SEPA-north_map.html</a></li> <li>• SEPA: <a href="http://www.sepa.org.uk/data/river_levels/data.htm">http://www.sepa.org.uk/data/river_levels/data.htm</a></li> </ul>	<p>Open Space Strategy should contain measures to protect water quality</p> <p>The implementation of the Open Space Strategy should ensure efficient design and management of SUDS</p> <p>The implementation of Open Space Strategy should minimise pollution from pesticides</p> <p>Open Space Strategy should encourage the sustainable use of water, and identify the more water intensive sporting developments.</p>
Soil quality	<ul style="list-style-type: none"> <li>• Soil erosion arising from the use of open spaces for recreational purposes, especially in areas of steep topography.</li> <li>• Soil sealing and compaction arising from the development of open space and recreational facilities and activities.</li> <li>• Substance used in constructing and equipping facilities, and cleaning and repairing open space and recreational facilities, could contaminate the soil.</li> <li>• Negative impacts on the soil resource from climate change, itself exacerbated by inappropriate use of products in pursuit of open space provision and maintenance; or, the support and promotion of carbon-intensive sporting activities.</li> </ul>	<ul style="list-style-type: none"> <li>• Aberdeenshire Council <i>Contaminated land Strategy (under review Dec 2006)</i></li> <li>• Aberdeenshire Council: <i>Public Register of Contaminated Land</i></li> <li>• Scottish Executive Statistics (2005): <i>Economic Report on Scottish Agriculture</i></li> <li>• <i>EU Thematic Strategy on Soil Protection COM(2006)231</i></li> </ul>	<p>Open Space Strategy should minimise soil erosion, sealing, compaction, and contamination</p> <p>Strategy should include an indicative assessment of the ecological footprint of various types of sporting activity.</p>

<p>Biodiversity</p>	<ul style="list-style-type: none"> <li>• Increased risk of disturbance to sensitive habitats and species if recreational open space is located near these areas.</li> <li>• Potential disturbance to European Protected Species (bats, badgers and otters)</li> <li>• Damage to habitats and species arising from use of toxic materials in open space management.</li> <li>• Damage to habitats and species arising from increased litter from urban populations.</li> <li>• Damage to micro-organisms in soil from the use of non-permeable surfaces, or erosion, sealing and compaction arising from overuse of sites.</li> <li>• Loss of habitats and species arising from climate change, itself exacerbated by use of products and material with a high carbon footprint, and support and promotion of sporting activities with high carbon impact.</li> <li>• Severance of links between greenspaces could limit migration of species across different areas.</li> </ul>	<ul style="list-style-type: none"> <li>• NE Biodiversity Action Plan: <i>Action Plans: &amp; Action Updates</i> <a href="http://www.nesbiodiversity.org.uk/habactionplan.htm">www.nesbiodiversity.org.uk/habactionplan.htm</a></li> <li>• Aberdeen and Aberdeenshire Council (2006) <i>Natural Heritage Topic Paper</i></li> </ul>	<p>Open Space Strategy to protect statutory protected species and non-statutory protected species of conservation interest in addition to designated and non-designated sites.</p> <p>Open Space Strategy to work with EL&amp;L and external partners e.g. KSB to discourage litter in urban areas.</p> <p>Open Space Strategy should risks of compaction, erosion and sealing.</p> <p>Need for Strategy to require application of sustainable purchasing policy in respect of equipment and products for open space.</p> <p>Open Space Strategy to maintain and promote links where this is beneficial to biodiversity. Also, to have regard to Forest Habitat Networks to promote optimum habitat provision.</p>
---------------------	---	--	--

<p>Human health</p>	<ul style="list-style-type: none"> <li>• Inadequate open space provision generally will contribute to growth in obesity and a range of physical and mental health problems.</li> <li>•</li> <li>• Inadequate measures to redress rising levels of inactivity among children and young people, especially girls, will exacerbate this trend.</li> <li>• Lack of pro-active measures to provide for hard to reach groups to engage in physical activity (children displaying 'at risk' behaviour, teenage girls) will exacerbate long-term well-being in these groups.</li> <li>• Inadequate scope for young women to engage as leaders of physical activities will compound lack of confidence and self-esteem in this group, with associated rise in crime and anti-social behaviour.</li> <li>• Lack of appropriate provision for elderly will lead to increasing isolation from communities in which they live, a lack of exercise, and a poor quality of life.</li> <li>• Potential conflicts between different user groups eg. riders, cyclists, walkers could lead to increased safety risks.</li> <li>• Severance of links between residential areas and recreational sites could limit opportunities for exercise and recreation. And provision of access e.g. footpath links to existing networks is significant environmental issue.</li> <li>• Use of pesticides on farmland adjacent to amenity areas could be detrimental to health</li> </ul>	<ul style="list-style-type: none"> <li>• Aberdeenshire Council (2004) <i>Scottish Index of Multiple Deprivation (Oxford Report) – Aberdeenshire: Key findings</i> <a href="http://www.aberdeenshire.gov.uk/statistics/economic/SIMD%20Abshire%20Key%20Findings%202004.pdf">http://www.aberdeenshire.gov.uk/statistics/economic/SIMD%20Abshire%20Key%20Findings%202004.pdf</a></li> <li>• Aberdeenshire Council (2002) <i>Sports and Active Lifestyles Strategy</i> (for the period 2002 to 2005).</li> </ul> <p>High Court Ruling 14/11/2008 in RE: Georgina Downs Vs. DEFRA</p>	<p>Open Space Strategy to provide for adequate access to the natural environment.</p> <p>Open Space Strategy to highlight barriers to participation in respect of at risk groups. To contain measures to redress the balance of provision either in the type or location of open space.</p> <p>Strategy to consider role of associated facilities e.g. W.C.s in overcoming access issues</p> <p>Open Space Strategy to monitor potential user conflicts</p> <p>Open Space Strategy to maintain and promote links between open spaces.</p> <p>Open Space Strategy to consider introduction of 'no-spray' zones around play areas and other amenity space</p>
---------------------	--	--	---

Population	<ul style="list-style-type: none"> <li>Increasing number of households is creating more demand for access to open space.</li> <li>The need for more development land is placing pressure on existing open space.</li> <li>Ageing population will create demand for certain types of open space and recreational facilities.</li> </ul>	<ul style="list-style-type: none"> <li>Aberdeen City and Aberdeenshire Councils (2006) <i>Topic Paper: Population and household change</i></li> <li><i>Register for General Scotland</i> (2006) Mid-2005 Population Estimates Scotland Population estimates by sex, age and administrative area, A National Statistics publication.</li> </ul>	Open Space Strategy to address demand and meet the needs of diverse populations
Cultural heritage	<ul style="list-style-type: none"> <li>The potential for significant effects on the historic environment from the inappropriate siting of sports and recreational facilities.</li> <li>Recreational and sporting activities could damage historical features through carelessness and foot fall.</li> </ul>	<ul style="list-style-type: none"> <li>Aberdeen City and Aberdeenshire Councils (2006) <i>Topic Paper: Built Heritage</i></li> <li>Scottish Executive (1999) <i>NPPG18: Planning and the Historic Environment</i></li> </ul>	Open Space Strategy should protect and, where appropriate, enhance or restore the historic environment
Landscape	<ul style="list-style-type: none"> <li>Inadequate care in the layout open space and facilities could fail to maximise its potential benefits in terms of enhancing the landscape.</li> <li>Open space provision has capacity to negatively impact on landscapes, including designated landscape protection areas, if siting and materials not given due consideration.</li> </ul>	<ul style="list-style-type: none"> <li>Scottish Natural Heritage (1997) National programme of landscape character assessment: Banff and Buchan, Review No 37.</li> <li>Scottish Natural Heritage (1998) South and Central Aberdeenshire: landscape character assessment, Review No 102.</li> </ul>	Open Space Strategy should have measures designed to conserve and enhance landscape character and scenic value of settlements and their surroundings.
Material assets	<ul style="list-style-type: none"> <li>Lack of recreational and sporting assets designed to meet the needs of groups identified as having barriers to participation in sport and accessing open space.</li> <li>Lack of adequate open space facilities that enhances the economic value of all assets and property owned by the people living in Aberdeenshire</li> </ul>	<i>SPP11: Open Space and Physical Activity</i>	<p>Open Space Strategy should identify where lack of material assets is disadvantaging particular sections of society from accessing open space and participating in exercise and sport.</p> <p>Strategy to propose measures to encourage investment in these assets.</p>



## 5 Scope and Level of Detail Proposed for the SEA

### 5.1 Alternatives/Options Considered

Although alternatives to the open space strategy are limited two alternatives have been considered. Alternatives are outlined here in order to set the context for the following two sections of this report, i.e. scoping of SEA issues and consideration of a framework for the assessment of environmental effects of the alternatives.

**Option 1 – Do Nothing:** This is not developing the Open Space Strategy. This is however not an option as failure to develop the strategy would contravene the provisions of SPP 11. Not developing the strategy also means that a number of those problems identified under Table 4.2 in relation all environmental issues would not be addressed.

**Option 2 – Do Optimum:** SPP 11 is the driver for this option. Under this option, Aberdeenshire Council will develop an evidence-based Open Space Strategy. The Council will have the opportunity to review existing policies, findings of the greenspace audit, and public consultation feedback relating to open space provision. The Strategy will include proposals for ongoing monitoring and feedback, as well as detailed maintenance and funding proposals.

### 5.2 Scoping in/out of SEA issues

In accordance with Schedule 2 of the Environmental Assessment (Scotland) Act 2005 Aberdeenshire Council has considered whether the environmental effects (positive and negative) of Aberdeenshire Open Space Strategy are likely to be significant. From the table of environmental problems identified, the baseline data and from the table of areas likely to be significantly affected, all environmental issues are open to pressures in Aberdeenshire to varying degrees. From the analysis of environmental problems in Table 4.2 above, open space provision and management are likely to have significant impacts on all environmental issues identified. For this reason, we consider that the strategy is likely to have significant environmental effects (positive or negative) on all environmental issues. We therefore scope in all environmental issues. A summary of our conclusions is given in Table 5.1

**Table 5.1. Scoping of SEA issues**

SEA issues	Scoped in	Scoped out	If scoped out, why
Biodiversity, flora, fauna	Yes		
Population	Yes		
Human health	Yes		
Soil	Yes		
Water	Yes		
Air	Yes		
Climatic factors	Yes		
Material assets	Yes		
Cultural heritage (including architectural and archaeological heritage)	Yes		
Landscape	Yes		

### **5.3 Framework for assessing environmental effects**

This strategy is assessed against the environmental issues. The effects of the Open Space Strategy will be predicted in terms of negative, positive, uncertain or neutral effects. The effects will further be evaluated to determine their significance on environmental receptors in terms of reversibility or irreversibility of effects, risks, duration - permanent, temporary, long-term, short-term and medium-term - and cumulative - direct, indirect, secondary and synergistic. Table 5.2 and Table 5.5 show the framework that will be used to assess the environmental effects of the options, strategic objectives and actions.

**Table 5.2: Assessment of effects - Options**

SEA Topics	Option 1 (Do Nothing)	Option 2 (Do Optimum)	Overall effect	Comments
Biodiversity (flora and fauna)				
Air & Climatic factors				
Soil				
Water				
Landscape				
Material Asset				
Cultural Heritage				
Population				
Human Health				

**Table 5.3: Assessment of the Objectives of OSS**

SEA Topics  Strategic Objectives	Biodiversity (flora and	Air & Climatic factors	Soil	Water	Landscape	Material Asset	Cultural Heritage	Population	Human Health	Overall effect	Comments
1. To improve policies and procedures in relation to the management of open space.											
2. To promote mental and physical wellbeing.											
3. To promote community identity and cohesion											
4. To improve the landscaping and visual appearance of communities.											
5. To conserve habitats and wildlife											
6. To promote integration between the location and management of Sustainable Urban Drainage Systems (SUDS) and the open space resource.											
7. To develop the resources and structures required to implement an integrated Strategy											
++=very positive	+= positive			+/- = mixed			? = uncertain				
-- = very negative	- = negative			0 = neutral							

**Table 5.4: Assessment of the Actions of the OSS**

	Strategic Objectives	SEA Topics	Biodiversity (flora and	Air & Climatic factors	Soil	Water	Landscape	Material Asset	Cultural Heritage	Population	Human Health	Overall effect	Comments
		Actions											
1	To improve policies and procedures in relation to the management of open space.	1.1 Develop a standards based policy for inclusion within the Local Development Plan.(LDP)											
		1.2 Provide justification within LDP settlement statements for detailed application of the policy, based on the findings of the open space audit.											
		1.3 Set the framework for masterplans and land allocations											
		1.4 Develop robust mechanisms for the funding and maintenance of the open space resource.											
		1.5 Review information from Section 75 monitoring spreadsheets (s75 Developer Contributions to communities)											
		1.6 Take account of views of local communities in the above.											

	Strategic Objectives	SEA Topics	Biodiversity (flora and	Air & Climatic factors	Soil	Water	Landscape	Material Asset	Cultural Heritage	Population	Human Health	Overall effect	Comments	
		Actions												
2	To promote mental and physical wellbeing.	2.1 Provide recreational and exercise opportunities across all age groups.												
		2.2 Ensure a range of appropriate options is available to male and female user groups.												
		2.3 Ensure a range of open space types is accessible to all residents of Aberdeenshire.												
		2.4 Ensure optimum linkage through integration with core paths plan												
		2.5 Promote an urban design culture in which greenspace is visually accessible from everyone's' homes.												
	2.6 Build in capacity for local food production													

	Strategic Objectives	SEA Topics	Biodiversity (flora and fauna)	Air & Climatic factors	Soil	Water	Landscape	Material Asset	Cultural Heritage	Population	Human Health	Overall effect	Comments
		Actions											
3	To promote community identity and cohesion	3.1 Provide gathering places for residents											
		3.2 Build in capacity for local food production											
		3.3 Draw on and develop public art resource											
		3.4 provide visual and social focus for communities											

	Strategic Objectives	SEA Topics	Biodiversity (flora and fauna)	Air & Climatic factors	Soil	Water	Landscape	Material Asset	Cultural Heritage	Population	Human Health	Overall effect	Comments
		Actions											
4	To improve the landscaping and visual appearance of communities.	4.1 Ensure open space is located for ease of access.											
		4.2 Ensure open space is structured and designed with a clear function.											
		4.3 Ensure open space is designed to encourage maximum usage on an annual basis with consciously designed sheltered spaces.											
		4.4 Soft planting should be primarily based on native plant species and species that support wild life.											
		4.5 Hard landscaping should use materials appropriate to the tradition of the location.											
		4.6 Landscape design should be promoted as a significant element of improving this urban environment of Aberdeenshire's settlements.											
		4.7 Landscape design should be promoted as a significant element of improving the competitive marketability of											



		Aberdeenshire's commercial and industrial areas.											
		4.8 Landscape open space should be designed to form part of an overall interconnected green space network.											
		4.9 Each settlement should have a strategic approach to enhance an existing public space and implementing new green space in order to generally improve amenity value, from gateway, along main access routes and into the heart of each settlement.											
		4.10 Landscape design should be fully integrated with other initiatives including public art, urban design and detailed initiatives including signage and lighting.											

	Strategic Objectives	SEA Topics	Biodiversity (flora and fauna)	Air & Climatic factors	Soil	Water	Landscape	Material Asset	Cultural Heritage	Population	Human Health	Overall effect	Comments
		Actions											
5	To conserve habitats and wildlife	5.1 Minimize interventions to natural spaces, in particular on designated sites.											
		5.2 Minimize the use of pesticides on managed open space.											
		5.3 Consider linkages to Biodiversity Action Plans											
		5.4 Minimise use of non-natural surfaces											
		5.5 Maximise potential of SUDS to enhance biodiversity											
		5.6 Define minimum percentage of green infrastructure to be included on development sites (including SUDS).											

	Strategic Objectives	SEA Topics	Biodiversity (flora and fauna)	Air & Climatic factors	Soil	Water	Landscape	Material Asset	Cultural Heritage	Population	Human Health	Overall effect	Comments	
		Actions												
6	To promote integration between the location and management of Sustainable Urban Drainage Systems (SUDS) and the open space resource.	6.1 Maximize potential of SUDS to incorporate biodiversity on developed sites												
		6.2 Maximize potential contribution of SUDS as a landscape feature, adding identity to communities.												
		6.3 Encourage use of major applications process to design in and agree maintenance of SUDS at pre-application stage.												
		6.4 Ongoing liaison with partners including Scottish Water to achieve satisfactory outcomes in above respects.												

	Strategic Objectives	SEA Topics	Biodiversity (flora and)	Air & Climatic factors	Soil	Water	Landscape	Material Asset	Cultural Heritage	Population	Human Health	Overall effect	Comments
		Actions											
7	To develop the resources and structures required to implement an integrated Strategy	7.1 Raise the profile of open space across the Council with reference to National Outcomes and related strategic priorities across the Services.											
		7.2 Increase expectation of open space provision as part of a wider drive to improve the sense of place and design within our communities.											
		7.3 Target planning contributions to maximum effect in terms of delivering quality, functional open space.											
		7.4 Promote cross-Service working											
<b>Key</b>	++=very positive -- = very negative		+= positive - = negative				+/- = mixed 0 = neutral					? = uncertain	



## 5.4 Cumulative Effect Assessment

A further framework for assessing cumulative and synergistic effects of the strategy is shown in Table 5.5 below

**Table 5.5 Cumulative & Synergistic Effects of Plan and Options**

<b>Objectives</b>	<b>Strategic Objective 1</b>	<b>Strategic Objective 2</b>	<b>Strategic Objective 3</b>	<b>Strategic Objective 4</b>	<b>Strategic Objective 5</b>	<b>Strategic Objective 6</b>	<b>Strategic Objective 7</b>	<b>Cumulative impacts</b>	<b>Comments</b>
<b>SEA Objective</b>									
<b>Biodiversity</b>									
<b>Air &amp; Climatic factors</b>									
<b>Water</b>									
<b>Landscape</b>									
<b>Soil</b>									
<b>Cultural Heritage</b>									
<b>Material asset</b>									
<b>Population &amp; Human health</b>									

### 5.5 Proposed Mitigation Measures

The SEA Directive requires that through mitigation measures, recommendations will be made to prevent, reduce or compensate for the negative effects of implementing the strategy. It also seeks to ensure that positive effects identified are enhanced. The proposed framework for mitigating significant environmental effects is shown in Table 5.6

**Table 5.6: Mitigation Framework**

SEA Issue	Existing problem	Plan Impact	Mitigation Measures	Who is responsible for undertaking the mitigation?	Who or what publication will actually provide the mitigation
Air					
Water					
Soil					
Climatic factors					
Biodiversity (flora and fauna)					
Population and Health					
Cultural Heritage					
Landscape					
Material Assets					

### 5.6 Monitoring Framework

The Aberdeenshire Council is required to monitor the significant environmental effects arising from the plan implementation. A monitoring report will therefore be integrated into the adopted plan to constantly monitor the significant environmental effects and the proposed framework for monitoring significant environmental effects of the implementation of the plan is shown in Table 5.7 below.

**Table 5.7 Monitoring Plan**

What needs to be monitored?	What sort of information is required? (Indicators)	Where can the information be obtained?	Are there gaps in the existing information and how can it be resolved?	When should the remedial action be considered?	Who is responsible for undertaking the monitoring ?	How should the results be presented?	What remedial actions could be taken?

## **5.7 The Appropriate Assessment**

Article 6 of the 'Habitats' Directive 92/43/EEC requires that where a plan or project may significantly affect a Natura 2000 site (natural heritage designation of international importance – Special Areas of Conservation, Special Protection areas, and Ramsar (wetland) sites), an Appropriate Assessment may be required. The purpose of the screening exercise will be to identify the likely significant effects on Natura 2000 sites at an early stage. The purpose of the appropriate assessment will then be to consider whether or not the Open Space Strategy will have adverse impacts on the sites' integrity. Scottish Government guidance Assessing Development Plans in Terms of the Need for Appropriate Assessment (May 2006) describes necessary measures to take for the Open Space Strategy to ensure safeguards are in place that will avoid adverse impacts on site integrity.

The procedure that will be followed to ensure compliance with the Article 6 process will consist of two stages. The first stage is identifying sites where there is likely to be a significant effect and the second stage is undertaking an appropriate assessment.

.



## 6 Next Steps

### 6.1 Proposed Consultation Timescale

In order to give an early and effective opportunity to the consultation authorities and the public to express their opinion on the strategy and the environmental report, the period of consultation Aberdeenshire Council intends to specify under Section 16(1)(b) and notify under Section 16(2)(a)(iv) is a minimum of 6 weeks (see Table 6.1).

### 6.2 Anticipated Milestones

Table 6.1 shows the remaining steps needed for the SEA of Aberdeenshire Council and how these steps would be carried out and described in the Final Environmental Report.

**Table 6.1: Proposed Consultation Timescale and Methods**

<b>Expected date/duration</b>	<b>Milestone</b>	<b>Comments</b>
5 weeks	Consulting on the Scoping Report	
4 weeks	Collating views on the Consultation	
4 weeks	Take the appropriate action on the Scoping report and the plan as the result of the consultations	
4 weeks	Finalise the environmental report & Appropriate Assessment	
6 weeks	Consulting on the Environmental Report and the Open Space Strategy	
2 weeks	Collating views on the Consultation	
5-8 weeks	Take the appropriate action on the environmental report and the plan as the result of the consultations	
2 weeks	Finalise the environmental report	
4 weeks	Take post-adoption measures	

## 7 Appendices: Open Space Strategy Context, Baseline & Assessments

### Appendix 7.1 - Links to other PPS and objectives

	Name of PPS / Environmental protection objective	Requirements of the PPS	How it affects, or is affected by OSS in terms of SEA issues* at Schedule 3 of the Environmental Assessment (Scotland) Act 2005
	<b>INTERNATIONAL</b>		
1	EC Birds Directive 79/409/EEC	<ul style="list-style-type: none"> <li>• Provide for the protection, management and control of all species of naturally occurring wild birds;</li> <li>• Seeks to preserve habitats for naturally occurring, rare and migratory species</li> </ul>	<b>Biodiversity, Fauna and flora</b> Open Space Strategy should not hinder protection, management and control of species of naturally occurring wild birds
2	EC Habitat Directive	<ul style="list-style-type: none"> <li>• Ensure biodiversity through the conservation of natural habitats and of wild fauna and flora</li> <li>• Maintain or restore natural habitats</li> <li>• Take into account economic, social and cultural requirements and regional and local characteristics</li> </ul>	<b>Biodiversity, Fauna and flora</b> Open Space Strategy should maintain and restore natural habitats to ensure biodiversity
3	European Biodiversity Framework	<ul style="list-style-type: none"> <li>• Promotes the conservation and sustainable use of biological diversity</li> <li>• Emphasises education, training and awareness, research, identification, monitoring and exchange of information</li> </ul>	<b>Biodiversity, Fauna and flora</b> Open Space Strategy should support conservation and sustainable use of biological diversity
4	European Framework on sustainable development 2001	<ul style="list-style-type: none"> <li>• Promote quality of life, coherent and cost effective policy-making; technological innovation; stronger involvement of civil society; and business in policy formulation</li> <li>• Strategies for sustainable economic growth should support social progress and respect the local environment</li> </ul>	<b>All Issues</b> Open Space Strategy support social progress and respect local environment -

5	European Spatial Development Perspective	<ul style="list-style-type: none"> <li>Emphasises the importance of achieving equality in all regions of the EU, through economic and social cohesion as well as the conservation and management of natural resources and the cultural heritage</li> <li>It stresses more balanced competitiveness of the European territory</li> </ul>	<p><b>All Issues</b> Open Space Strategy should have a sustainable vision and provide sustainable spatial policies. This may encompass many issues</p>
6	Kyoto Protocol (1992)	<ul style="list-style-type: none"> <li>Encourages reduction of emissions of greenhouse gases</li> <li>UK seeks to reduce emissions of six key greenhouse gases by 12.5% relative 1990 level over the period 2008 to 2012.</li> </ul>	<p><b>Air &amp; Climatic factors</b> Open Space Strategy should limit or reduce the emissions of greenhouse gases Follow interpretations and targets interpreted into national, regional and local guidance</p>
7	The Johannesburg Declaration on Sustainable Development	<ul style="list-style-type: none"> <li>Promotes corporate environmental and social responsibility and accountability</li> <li>Promotes the use of renewable resources, more resource use efficiency and integrated strategies for managing water.</li> </ul>	<p><b>All Issues</b> Open Space Strategy should encourage increased use of renewable resources and promote SUDS as part of integrated water management.</p>
8	The Sixth Environmental Action Programme of the European Community 1600/2002/EEC	<ul style="list-style-type: none"> <li>Promotes Clean Air for Europe (CAFÉ); Supports sustainable use of pesticides, conservation of the maritime environment</li> <li>Favours soil protection, waste prevention and recycling as well as sustainable use of natural resources, and the urban environment</li> </ul>	<p><b>Air &amp; Climatic factors</b> Open Space Strategy should ensure sustainable use of natural resources, in particular pesticides, and include measures for soil protection wherever appropriate.</p>
9	Water Framework Directive 2000/60/EC	<ul style="list-style-type: none"> <li>Safeguard the sustainable use of surface water; transitional waters, coastal waters and groundwater</li> <li>Supports the status of aquatic ecosystems and</li> </ul>	<p><b>Water</b> Open Space Strategy should consider sustainable use of water and measures</p>

		<p>environments;</p> <ul style="list-style-type: none"> <li>• Addresses groundwater pollution; flooding and droughts; river basin management planning;</li> </ul>	that mitigate the effects of floods and droughts
10	European Landscape Convention	<ul style="list-style-type: none"> <li>• Aimed at the protection, management and planning of landscapes across Europe. Highlights the need for public involvement, and promotes European cooperation on landscape issues. Sets out a range of different solutions that states can apply.</li> </ul>	<p><b>Landscape</b> Open Space Strategy should look to examples of good practise from other countries, and ensure protection and management of valued landscapes.</p>
11	EU Thematic Strategy on Soil Protection (COM 2006/231)	<p>The overall objective is protection and sustainable use of soil, based on</p> <ul style="list-style-type: none"> <li>• Preventing further soil degradation and preserving its functions when soil is used and its functions are exploited, action has to be taken on soil use and management patterns, and when soil acts as a sink/receptor of the effects of human activities or environmental phenomena, action has to be taken at source.</li> <li>• Restoring degraded soils to a level of functionality consistent at least with current and intended use, thus also considering the cost implications of the restoration of soil.</li> </ul>	<p><b>Soil</b> Open Space Strategy should protect soil resource</p>
	<b>NATIONAL</b>		
12	Urban White Paper	<ul style="list-style-type: none"> <li>• Promotes attractive, well-kept towns and cities which use space and building well; supports good design and planning which makes it practical to live in a more environmentally sustainable way, with less noise, pollution and traffic congestion</li> <li>• Seeks prosperous towns and cities offering good quality services, health, education, housing, transport, finance, shopping, leisure, and protection from crime that meet the needs of people and businesses wherever they are</li> </ul>	<p><b>Material Asset, Population &amp; human health</b> Open Space Strategy should promote good design, safe environment, clean environment and good quality services</p>
13	Climate Change: The UK programme	<ul style="list-style-type: none"> <li>• Makes local authorities central to more sustainable</li> </ul>	<b>All Issues</b>

		<p>development and land use, energy efficiency, in housing provision, transport</p> <ul style="list-style-type: none"> <li>• Promotes well-being in communities through energy saving measures/low carbon technologies</li> <li>• Best Value Performance Indicator 180 requires local authorities to benchmark energy use in their operational property</li> </ul>	Open Space Strategy should promote sustainable alternatives to car and reduce congestion traffic pollution
14	Energy White Paper – Our Energy Future – Creating a low carbon economy	<ul style="list-style-type: none"> <li>• Encourages cuts in UK’s carbon dioxide emissions</li> <li>• Commits to Increase the proportion of electricity provided by renewable sources to 10% by 2010, &amp; double the proportion of electricity supplied by renewable by 2020 subject to consumer acceptance</li> <li>• Ensure that every home is adequately and affordably heated</li> </ul>	<p><b>Air &amp; climatic factors</b></p> <p>Open Space Strategy should require new sports/recreational development to be more energy efficient and to have some energy provided from renewable resources ; also to promote sustainable alternatives to car use.</p>
15	The UK’s Shared Framework for Sustainable Development (2005)	<ul style="list-style-type: none"> <li>• Encourages living within environmental limits; ensuring a strong, healthy and just society; achieving a sustainable economy; promoting good governance and using sound science responsibly.</li> <li>• Prioritises sustainable production and consumption; climate change and energy; natural resource protection and environmental enhancement; and sustainable communities.</li> </ul>	<p><b>All Issues</b></p> <p>Open Space Strategy should promote healthy society, with equal access to open space among different groups.</p>
16	UK Biodiversity Action Plan	<ul style="list-style-type: none"> <li>• Seeks to conserve and enhance biological diversity within the UK and to contribute to the conservation of global biodiversity through all appropriate mechanisms.</li> </ul>	<p><b>Biodiversity, flora &amp; fauna</b></p> <p>Open Space Strategy should promote biodiversity</p>
17	Wildlife and Country Act 1981	<ul style="list-style-type: none"> <li>• Gives protection to listed species from disturbance, injury intentional destruction or sale.</li> </ul>	<p><b>Biodiversity</b></p> <p>Open Space Strategy should protect wildlife from disturbance, injury intentional destruction</p>
18	Historic Scotland’s Memorandum of Guidance on Listed Buildings and	<ul style="list-style-type: none"> <li>• Provides the context for listed buildings, conservation areas, as well as Gardens and</li> </ul>	<b>Cultural Heritage</b>

	Conservation Areas	<p>Designed Landscapes</p> <ul style="list-style-type: none"> <li>• Clarifies the context for listed building consents and the intervention by planning authorities</li> </ul>	Open strategy should be consistent with designations
19	Meeting the Needs, Priorities, Actions and Targets for Sustainable Development in Scotland (2002)	<ul style="list-style-type: none"> <li>• Prioritises responsible resource use;</li> <li>• Encourages the generation of less energy and use of power from renewable sources;</li> <li>• Encourages better land use planning, alternative service delivery and sustainable transport systems.</li> </ul>	<p><b>All Issues</b></p> <p>Open Space Strategy should promote efficient resource use, energy efficiency and layouts which reduce the need to travel</p>
20	Scottish Executive Policy Statement for Scotland - Designing Places	<ul style="list-style-type: none"> <li>• Raises standards of urban and rural development.</li> <li>• Empowers everyone to play a part in shaping the built environment, whether as politicians, developers, planners, designers, opinion-formers or anyone else whose attitudes have a direct or indirect influence on what gets built.</li> </ul>	<p><b>Population and human health</b></p> <p>Open Space Strategy should promote the economy, support the community and public service</p>
21	The Conservation (Natural Habitats, &c.) Regulations 1994	<ul style="list-style-type: none"> <li>• Provide for the designation and protection of European sites, of European Protected Species and the adaptation of planning and other controls for the protection of European sites.</li> </ul>	<p><b>Biodiversity</b></p> <p>Open Space Strategy should ensure the protection of sites and species designated under EU legislation.</p>
22	The Conservation (Natural Habitats, & C) Amendment (Scotland Regulations 2007	<p>Expands the scope of the existing regulations to include</p> <ul style="list-style-type: none"> <li>• Part 1 of the Water Environment and Water Services (Scotland) Act 2003, the Water Environment (Controlled Activities) (Scotland) Regulations 2005 and National Park authorities <p>It tightens the regulations regarding</p> <ul style="list-style-type: none"> <li>• Surveillance of conservation status of habitats and species</li> <li>• Protection of certain wild animals</li> <li>• Protection of certain wild plants</li> <li>• Monitoring incidental capture and killing</li> <li>• Offence of breaching licence condition</li> <li>• Abstraction and works authorised under water legislation</li> </ul> </li></ul>	<p><b>Biodiversity</b></p> <p>The Open Space Strategy should tighten the protection of habitats and species</p>
23	Nature Conservation (Scotland) Act	<ul style="list-style-type: none"> <li>• Sets out a series of measures, which are designed</li> </ul>	<b>Biodiversity, flora &amp; fauna</b>

		<p>to conserve biodiversity and to protect and enhance the biological and geological natural heritage of Scotland.</p> <ul style="list-style-type: none"> <li>• Places a general duty on all public bodies to further the conservation of biodiversity.</li> </ul>	Open Space Strategy should promote biodiversity
24	Passed to the Future	<ul style="list-style-type: none"> <li>• This is Historic Scotland's Policy for the sustainable Management of the Historic Environment</li> <li>• Stresses the value of retaining and where possible and right to do so, re-using existing structures and materials</li> <li>• Explains the continued relevance of traditional building materials and local craft skills</li> </ul>	<p><b>Cultural Heritage</b></p> <p>Open Space Strategy should encourage the re-use of existing and traditional structures and materials and protect and enhance archaeological sites.</p>
25	Disability Discrimination Acts 1995 & 2005	<ul style="list-style-type: none"> <li>• Ensures that discrimination law covers all the activities of the public sector; and requires public bodies to promote equality of opportunity for disabled people.</li> <li>• Aims to end the discrimination that many disabled people face and gives disabled people rights in the areas of employment, education, access to goods, facilities and services and buying or renting land or property.</li> </ul>	<p><b>Population and Human health</b></p> <p>Open Space Strategy should build the needs of the disabled persons into its strategic actions</p>
26	Physical Activity Strategy	<ul style="list-style-type: none"> <li>• Aims to increase and maintain the proportion of physically active people in Scotland.</li> <li>• Sets targets to achieve 50 percent of adults aged over 16 and 80 percent of all children aged 16 and under who meet the minimum recommended levels of physical activity by 2022 through building healthy public policy, creating supportive environments, strengthening community action, developing personal skills and directing health services at the people who need them most.</li> </ul>	<p><b>Population and Human health</b></p> <p>Open Space Strategy should promote physical activities</p>

27	Scottish Historic Environment Policy 1	<ul style="list-style-type: none"> <li>• Sets out the policy for the identification and designation of nationally important ancient monuments</li> <li>• Sets the context to conserve the evidence of Scotland's past based on their cultural significance.</li> </ul>	<p><b>Cultural Heritage</b> Housing strategy should ensure the conservation of historic areas of cultural significance</p>
28	SHEP No 2 <i>Scheduled Ancient Monuments</i>	<ul style="list-style-type: none"> <li>• Sets out Scottish Ministers' policy for the identification and designation of nationally important ancient monuments, which range from 4000BC to World War Two defences in the 1940s.</li> </ul>	<p><b>Cultural Heritage</b> Include a SEA objective that protects and enhances archaeological sites and other culturally important features.</p>
29	Reaching Higher (Scottish Executive 2007)	<ul style="list-style-type: none"> <li>• It focuses on the promotion, delivery, playing and enjoyment of sport. Key to this is developing a culture where sport is valued for the pleasure and quality it brings to people's lives and for the pride and recognition it brings to our nation.</li> </ul>	<p><b>Population &amp; Human Health</b> The Strategy should promote the delivery, playing and enjoyment of sports</p>
30	Planning Policy for the Protection of Playing fields ( <b>Sportscotland</b> 2007)	<ul style="list-style-type: none"> <li>• It seeks to address development pressures on playing fields by setting out a policy framework for interaction between planners and sports managers like <b>sportscotland</b> so that playing fields can be protected and improved.</li> </ul>	<p><b>Population &amp; Human Health</b> The Strategy should address conflicts between development and recreation</p>



31	National Audit for Sports Facilities ( <b>Sportscotland</b> 2007)	<ul style="list-style-type: none"> <li>• Sets the framework and the need to audit sports facilities, establish the general condition of sports facilities, estimate where necessary the capital cost of bringing them up to an acceptable standard and to estimate the costs of maintaining them in an acceptable condition</li> </ul>	<b>Population &amp; Human Health</b> The Strategy should be supported by proper audits
32	Performance review of Sports in Scotland ( <b>Sportscotland</b> 2007)	It highlights <ul style="list-style-type: none"> <li>• the need to encourage participation</li> <li>• the need for improved data to monitor and evaluate participation levels</li> <li>• the need for Scotland to take a nationwide approach to facility planning and investment</li> <li>• the need for Scottish Government to properly assess and manage the significant risks associated with the games</li> </ul>	<b>Population &amp; Human Health</b> The Strategy should encourage participation, monitoring and evaluation
33	SPP1 - The Planning System	<ul style="list-style-type: none"> <li>• Promotes sustainable economic Development in planning</li> <li>• Encourages and supports regeneration and social justice through the planning system</li> <li>• Maintaining and enhancing the quality of natural heritage and built environment</li> </ul>	<b>All Issues</b> Open Space Strategy should pursue sustainable economic development, regeneration and social justice
34	SPP 11 – Physical Activity and Open Space (draft)	<ul style="list-style-type: none"> <li>• Ensures local authorities take a strategic approach to sport and open space provision; protects and enhances networks of open space; and supports opportunities for active and passive recreation;</li> <li>• Set standards for the quantity and quality of open space in new developments; provides for its long-term maintenance; and provides guidance on planning for development of new sports and recreation facilities.</li> </ul>	<b>Population and Human health</b> Open Space Strategy should promote physical activities

35	PAN 44 Fitting New Housing Development Into The Landscape.	<ul style="list-style-type: none"> <li>Provides advice to help planners, developers and local communities achieve residential developments which are in harmony with their landscape setting and which make a more positive contribution to the character of existing settlements.</li> </ul>	<b>Landscape</b> Open Space Strategy should promote good landscape designs
36	PAN 56: Planning and Noise	<ul style="list-style-type: none"> <li>Indicates how noise issues should be handled in development plans and development control.</li> <li>Outlines ways of mitigating the adverse impact of noise.</li> <li>Provides specific guidance on noisy and noise-sensitive development and introduces the use of noise exposure categories.</li> <li>Gives guidance on the use of planning conditions relating to noise</li> </ul>	<b>Population &amp; human health</b> Consider strategies that minimise noise in housing construction
37	PAN 58: Environmental Impact Assessment	<ul style="list-style-type: none"> <li>Seeks the provision of information and guidance on the legislative background to EIA, the process of environmental impact assessment, and the evaluation of environmental information by the planning authority and implementation through the planning decision.</li> </ul>	<b>All Issues</b> Open Space Strategy should contribute to environment protection
38	PAN 59: Improving Town Centres	<ul style="list-style-type: none"> <li>Promotes lively, vibrant and viable town centres that provide a quality urban environment where people can live, feel safe, businesses can prosper and opportunities exist for new stimulating activities</li> <li>Ensure town centres are flexible and adaptable if they are to remain active and attractive; and are accessible by a variety of efficient and effective modes of transport, have an amenity which is attractive, clean and safe, and are planned, managed and promoted in a positive way</li> </ul>	<b>All issues</b> Open Space Strategy should contribute to sustainable economic development

39	PAN 60: Planning for Natural Heritage	<ul style="list-style-type: none"> <li>• Provides advice on how development and the planning system can contribute to the conservation, enhancement, enjoyment and understanding of Scotland's natural environment.</li> <li>• Encourages developers and planning authorities to be positive and creative in addressing natural heritage issues</li> </ul>	<p><b>Cultural heritage, Landscape</b></p> <p>Open Space Strategy should contribute to the conservation, enhancement, enjoyment and understanding of the natural environment.</p>
40	PAN 61 Planning And Sustainable Urban Drainage Systems.	<ul style="list-style-type: none"> <li>• Describes how the planning system has a central co-ordinating role in getting SUDS accepted as a normal part of the development process. In implementing SUDS on the ground, planners are central in the development control process, from pre-application discussions through to decisions, in bringing together the parties and guiding them to solutions which can make a significant contribution to sustainable development</li> </ul>	<p><b>Water &amp; Soil</b></p> <p>Open Space Strategy should consider the role of sustainable urban drainage</p>
41	PAN 65: Planning and Open Space	<ul style="list-style-type: none"> <li>• Raise the profile of open space as a planning issue</li> <li>• Provides advice on the role of the planning system in protecting and enhancing existing open spaces and providing high quality new spaces</li> <li>• Sets out how local authorities can prepare open space strategies and gives examples of good practice in providing, managing and maintaining open spaces</li> </ul>	<p><b>Landscape, human health</b></p> <p>Open Space Strategy should promote conservation and environment protection</p>
42	PAN 67 Housing Quality	<ul style="list-style-type: none"> <li>• Sets out the aspirations for design and the role of the planning system in delivering them, and explains how Designing Places should be applied to new housing.</li> <li>• Makes the design of new housing to reflect a full understanding of its context - in terms of both its physical location and market conditions. It seeks to make the design of new housing to reinforce local</li> </ul>	<p><b>Cultural heritage, Population &amp; human health</b></p> <p>Open Space Strategy should safeguard high standard of designs</p>

		and Scottish identity and that new housing should be integrated into the movement and settlement patterns of the wider area.	
43	PAN 68 Design Statements	<ul style="list-style-type: none"> <li>• Clarifies the role of design statements and applicants,</li> <li>• Aims to see design statements used more effectively in the planning process and to create places of lasting quality.</li> </ul>	<p><b>Cultural heritage, Population &amp; human health</b></p> <p>Open Space Strategy should safeguard high standard of designs</p>
44	PAN 69 Planning And Building Standards Advice On Flooding	<ul style="list-style-type: none"> <li>• Ensures that future built development is not located in areas with a significant risk of flooding, including functional flood plains.</li> <li>• Provides background information on the impact of floodwater on buildings and materials, and advice on flood resistant materials and forms of construction that may be necessary to obtain a building warrant. Many of the measures described in the PAN will have a role to play as part of a sustainable approach to flood management.</li> </ul>	<p><b>Water &amp; Soil</b></p> <p>Open Space Strategy should avoid and minimise the risk to flooding</p>
45	PAN 74: Affordable Housing	<ul style="list-style-type: none"> <li>• Sets a benchmark for contributions for affordable housing from new planning applications. The benchmark for developer contribution for affordable housing has been set at 25% on sites of 20 units or more.</li> <li>• Recommends closer working between Local Authority Housing and Planning services to ensure the need for affordable housing is met.</li> </ul>	<p><b>Material Asset</b></p> <p>Open Space Strategy should make provision for affordable housing</p>

46	PAN 76 New Residential Streets	<ul style="list-style-type: none"> <li>• Aims at creating attractive, safe residential environments, which reflect the needs of people, rather than cars.</li> <li>• Requires that street design should reflect local character, be appropriate to the built form and linked to surrounding areas by direct pedestrian, cycle and car routes; that the character of the street should be determined by space requirements of people and vehicles, street furniture should fit with its surroundings and streets should use high quality materials, be well maintained and may employ signage to reinforce its sense of place; and that streets should provide easy movement within and beyond the site, street design itself should be used to limit traffic speed and home zones, prioritising pedestrian and cycle needs over car users, should be considered for residential streets.</li> </ul>	<p><b>Cultural heritage, Population &amp; human health</b></p> <p>Open Space Strategy should safeguard safe and high standard design of streets</p>
47	PAN 77 Designing Safer Places	<ul style="list-style-type: none"> <li>• Highlights the positive role that planning can play in helping to create attractive, well-managed environments which help to discourage antisocial and criminal behaviour.</li> <li>• Aims to ensure that new development can be located and designed in a way that deters such behaviour as poorly designed surroundings can create feelings of hostility, anonymity and alienation and can have significant social, economic and environmental costs.</li> </ul>	<p><b>Cultural heritage, Population &amp; human health</b></p> <p>Open Space Strategy should safeguard safety</p>
48	PAN 78 Inclusive Design	<ul style="list-style-type: none"> <li>• Seeks to deliver high standards of design in development and redevelopment projects; and widens the user group that an environment is designed for. Makes is a legal requirement to consider the needs of disabled people under the terms of Disability Discrimination legislation.</li> </ul>	<p><b>Cultural heritage</b></p> <p>Open Space Strategy should promote high standard of design</p>

49	Land Reform (Scotland) Act 2003	<ul style="list-style-type: none"> <li>The Act provides responsibilities for local authorities to create and maintain core path networks.</li> </ul>	<b>Biodiversity, Landscape, Human Health</b> Open Space Strategy should be consistent with core paths plan
50	Scotland's Sustainable Development Strategy, 2005	<ul style="list-style-type: none"> <li>Has actions to continue to promote walking and cycling for sustainable transport and health benefits</li> </ul>	<b>Human health</b> Open Space Strategy should promote walking and cycling
51	Protection of Badgers Act 1992	<ul style="list-style-type: none"> <li>Aimed at protection of badgers, and applicable to wide range of land users, and hence uses. Prohibits any damage to setts, and encouraging access to setts by dogs.</li> </ul>	<b>Biodiversity</b> Open Space Strategy should discourage any potential disturbance to badgers
52	Healthy Eating, Active Living: Action Plan to improve Diet, Increase Physical Activity and Tackling Obesity (June 2008)	<ul style="list-style-type: none"> <li>Outlines scale and nature of issues in our communities, and recognizes role of physical environment in our physical and mental health.</li> </ul>	<b>Population &amp; human health</b> Open space Strategy to highlight links between healthy communities and use of open space.
53	Health Impact Assessment of Greenspace – A Guide	<ul style="list-style-type: none"> <li>Guide to advise how to assess health and equity impacts of greenspace, and promote greater recognition in role of greenspace in improving health.</li> </ul>	<b>Human Health</b> Open Space Strategy to be assessed through HIA.
54	UK Pesticides Strategy: A	<ul style="list-style-type: none"> <li>Replaces Pesticides and Environment Strategy</li> </ul>	<b>Human Health, Biodiversity</b>

	Strategy for the Sustainable use of Plant Protection Products	<p>(DEFRA 2006), and extends it to cover human health issues arising from Pesticide use</p> <ul style="list-style-type: none"> <li>Includes aspects of pesticide in amenity landscape management, and covers health of people and the environment</li> </ul>	Open Space Strategy should include measures to minimise adverse impacts on human health and the environment arising from pesticide use
55	Building on Energy	<ul style="list-style-type: none"> <li>Sets out strategic priorities to achieve target growth rate across the NE, whilst acknowledging that quality of life is a key factor both in retaining the population, and attracting more people. Recreation and natural environment are recognized as key components of the quality of life, and the plan aims to improve its overall position as measured against other city regions, over the next 5 years.</li> </ul>	<p><b>Material Asset, Biodiversity, Population &amp; Human Health</b></p> <p>Open Space Strategy to set out measures to protect and improve upon recreational and natural environment component of our communities,</p>
56	Joint Health Improvement Plan	<ul style="list-style-type: none"> <li>Seeks to encourage, support and enable individuals and communities to take shared responsibility for their own health and to work together to bring about improvements by enabling people to become involved in community issues;</li> <li>Supports action to suppress poverty, lack of physical activity and leisure facilities, poor housing and other factors that contribute to physical inequality;</li> </ul>	<p><b>Population &amp; human health</b></p> <p>Develop open space strategy that support health and well-being</p>
57	North East of Scotland Local Biodiversity Action Plan	<ul style="list-style-type: none"> <li>Ensures the protection and enhancement of the biodiversity in the north east through the development of effective, local, working partnerships;</li> <li>Ensure that national targets for species and habitats, as specified in the UK Action Plan, are translated into effective local action;</li> <li>.</li> </ul>	<p><b>Biodiversity, fauna &amp; flora</b></p> <p>Open Space Strategy should promote biodiversity</p>
58	North East Scotland Together Aberdeen & Aberdeenshire Structure Plan 2001-2016	<ul style="list-style-type: none"> <li>Creates a long-term sustainable framework of settlements in a hierarchy, which focuses major development on the main settlements in the North East,</li> </ul>	<p><b>All Issues</b></p> <p>Open Space Strategy should promote sustainable development</p>

		<ul style="list-style-type: none"> <li>• Sets the strategic context for Aberdeenshire Local Plan which in turn set the framework for land use housing development</li> </ul>	
	<b>LOCAL</b>		
59	Aberdeenshire Community Plan	<ul style="list-style-type: none"> <li>• Stresses access to services of a high quality that meet their needs; seeks to make Aberdeenshire an attractive, clean, healthy and safe place to live;</li> <li>• Promotes Aberdeenshire as forward-looking</li> </ul>	<b>All Issues</b> Open Space Strategy should support accessibility, health, Safety, and the environment
60	Aberdeenshire Local Plan	<ul style="list-style-type: none"> <li>• Sets the context and targets for land use, and the direction as well as the capacity of housing development in Aberdeenshire</li> </ul>	<b>All Issues</b> Open Space Strategy should be consistent with the local Open Space Strategy
61	Aberdeenshire Parks and Open Space Strategy 2006	<ul style="list-style-type: none"> <li>• Sets the framework of the audit of open spaces, and proper development, management and improvement parks and open space</li> </ul>	<b>Population and Human Health</b> The Open space strategy should ensure proper management and improvement of facilities
62	Aberdeenshire Local Transport Strategy	<ul style="list-style-type: none"> <li>• Makes the local transport strategy to take full account of the environment, social and economic implications of transport;</li> <li>• Promotes the maximisation of accessibility for all to services and jobs; efficient resource use, as well as safety in delivering transportation</li> </ul>	<b>Material Asset, Air, Climatic factors</b> Open Space Strategy should support social exclusion, sustainability, environment protection, accessibility and safety
63	Landscape Character Assessment of Aberdeen.	<ul style="list-style-type: none"> <li>• Seeks to maintain a balance between landform, geology, ecology, and vegetation despite human influences.</li> <li>• Encourages development in existing settlements; avoiding coalescence between settlements and discouraging isolated development in the open countryside unless it is clearly identified in development plan</li> </ul>	<b>Landscape</b> Open Space Strategy should promote good landscape designs



64	Aberdeenshire Council Economic Development Priorities	<ul style="list-style-type: none"> <li>Seeks to promote economic development in Aberdeenshire area based on renewable energy, integration of agricultural and fisheries sectors as well as having an input into employment land provisions</li> </ul>	<p><b>Material Asset</b></p> <p>The open space strategy should be consistent with economic development priorities</p>
65	Aberdeenshire Council Sustainability Charter 2004	<p>The Charter aims to:</p> <ul style="list-style-type: none"> <li>reduce key resource usage (i.e. energy, water, travel, and waste);</li> <li>raise awareness;</li> <li>adopt a sustainable purchasing policy;</li> <li>reduce global footprint and</li> <li>encourage consultation</li> </ul>	<p><b>All</b></p> <p>Open Space Strategy should promote minimisation of resource use</p>
66	Aberdeenshire Council Carbon Management Programme 2007	<p>The programme seeks to achieve</p> <ul style="list-style-type: none"> <li>Overall reduction in CO2 emissions of 20% by 2012</li> <li>An aspirational target to reduce CO2 emissions by 30% by 2012</li> </ul>	<p><b>All</b></p> <p>Open Space Strategy should promote reduction in CO2 emissions</p>
67	Aberdeenshire Council's Core Paths Plan Draft	<ul style="list-style-type: none"> <li>Prepared in accordance with requirements of Land Reform Act, Core Paths Plan aims to improve and connect path network in Aberdeenshire to give public reasonable access throughout the area.</li> <li></li> </ul>	<p><b>Biodiversity, Population &amp; Human Health</b></p> <p>Open Space Strategy should protect and promote access to core paths</p>
68	Aberdeenshire Council Pitches Strategy Draft 2008	<ul style="list-style-type: none"> <li>Sets out the context for effective and efficient development, management and rationalisation of Aberdeenshire pitches</li> </ul>	<p><b>Biodiversity, Population and Human health</b></p> <p>The Open space strategy should promote efficiency and effectiveness</p>
69	Aberdeenshire Council Sports and Active Lifestyle Strategy 2005-2008	<ul style="list-style-type: none"> <li>Maximise opportunities for people of all ages and abilities to participate in sport and physical recreation.</li> <li>Develop the infrastructure, which will allow athletes and participants in sport and active recreation to flourish.</li> </ul>	<p><b>Human Health and Population</b></p> <p>The implementation of the sports strategy should ensure broad participation, flourishing of participants, and</p>

		<ul style="list-style-type: none"><li>• Build the capacity of communities to sustain sporting and recreational activities and new opportunities.</li><li>• Raise the profile of sport and recreation and promote the contribution it makes to the quality of life in Aberdeenshire.</li></ul>	sustainability of facilities
--	--	---	------------------------------

## Appendix 7.2: Baseline data, targets and trends

Table 7.2.1: SEA Topic: Air Quality (NO<sub>2</sub>)

SEA Indicator	Quantified Information					Comparators and targets	Trends	Issues/constraints	Data source(s)
Air quality (NO <sub>2</sub> ) monitored at the following locations	Annual Mean ugm-3	Bias Corrected (by factor of 1.04) Annual Mean ugm-3 (2004)	Bias Corrected (by factor of 1.04) Annual Mean ugm-3 (2005)	Bias Corrected (by factor of 1.04) Annual Mean ugm-3 (2006)	2010 Estimate Annual Mean ugm-3	Aberdeen was designated as an AQMA in 2001 for continuously exceeding the 2005 annual objective level for nitrogen dioxide (NO <sub>2</sub> ) of 40 µgm <sup>-3</sup> . The annual mean standard of NO <sub>2</sub> in Union St was 53 micrograms per cubic metre (µgm <sup>-3</sup> ) and in Market St 71 µgm <sup>-3</sup> , principally from HGVs and buses. The AQMA includes Market St, Union St, King St, Guild St, and Virginia St.	Improving	Traffic growth is a constraining factor in the future	Aberdeen City Council: <a href="#">Air Quality Report - 4th Stage Air Quality Review and Assessment</a> (2003); and <a href="#">Aberdeen City Council Air Quality Action Plan</a> (2006) Aberdeenshire Council (2005) <i>Local Air Quality Management Progress Report</i> Aberdeenshire Council (2006) <i>Updating and Screening Assessment Aberdeen: Aberdeenshire Council</i> Aberdeenshire Council (2007) <i>Local Air Quality Management: Progress Report 2007</i> . Aberdeen: Aberdeenshire Council
Westhill 1	11.7	10.4	11.1	12.2	10.3				
Westhill 2	16.1	20.0	14.6	16.7	14.2				
Inverurie 1	31.7	34.1	26.5	33.0	28.1				
Inverurie 2	10.2	11.1	10.1	10.6	9.3				
Inverurie 3	11.2	12.9	10.8	11.6	10.2				
Inverurie 4	9.6	10.8	10.1	10.0	8.8				
Stonehaven 1	25.0	25.1	20.6	26.0	22.1				
Stonehaven 2	11.3	10.6	10.7	11.6	10.2				
Stonehaven 3	10.5	9.4	9.2	10.9	9.6				
Peterhead 1	25.7	26.1	22.9	26.7	22.7				
Peterhead 2	26.3	32.2	23.5	27.4	23.3				
Peterhead 3	24.1	23.6	21.3	25.1	21.3				
Peterhead 4	24.3	24.9	20.6	25.3	21.5				
Mintlaw 1	17.5	14.2	15.1	18.2	15.5				

Table 7.2.2: SEA Topic: Air - Smoke, Grit, Dust, PM10 and Odour

Air quality complaints/enquiries dealt with	Quantified Information		Comparators and targets	Trends	Issues/constraints	Data source(s)
	Number 2004	Number 2006				
<b>Service Request Category</b>			Improving In 2003, monitoring of particulate matter (PM <sub>10</sub> ), showed an exceedence of the 2010 annual mean PM <sub>10</sub> objective of 18µg/m <sup>-3</sup> on Market Street. Daily mean traffic volumes (2002): Market Street: 31,958 Union Street: 19,293 Annual average daily traffic along North/South/ Anderson Drive is 36,246, and Auchmill Rd, 41,223.	Mixed, some categories improving while others are worsening	Potential pesticide use in amenity landscape management and adjacent agricultural land could be harmful to human health	Aberdeen City Council: <a href="#">Air Quality Report - 4th Stage Air Quality Review and Assessment</a> (2003); and <a href="#">Aberdeen City Council Air Quality Action Plan</a> (2006) Aberdeenshire Council (2005) <i>Local Air Quality Management Progress Report</i> Aberdeenshire Council (2006) <i>Updating and Screening Assessment Aberdeen</i> : Aberdeenshire Council Aberdeenshire Council (2007) <i>Local Air Quality Management: Progress Report 2007</i> . Aberdeen: Aberdeenshire Council
Smoke, Domestic Bonfires	18	30				
Smoke, Industrial/Commercial	37	26				
Smoke, Industrial Chimney	1	1				
Smoke, Domestic Chimney	2	3				
Dark Smoke, Visible Plume etc	2	6				
Stubble Burning	2	3				
<b>Total Smoke</b>	<b>62</b>	<b>69</b>				
Grit/Dust Chimney	0	0				
Grit/Dust DIY Activity	3	1				
Grit/Dust Unknown/Other	8	12				
Smuts/Deposits	1	3				
<b>Total Grit/Dust</b>	<b>12</b>	<b>16</b>				
Odour/Fumes/Industrial/Commercial	104	65				
Odour/Fumes/Domestic	21	21				
Agricultural Odours- Spreading	8	10				
Agricultural Odours - Housing	8	3				
Agricultural Odours – Dung Heaps	7	6				
Agricultural Odours – Sources Unknown	5	1				
Odour Unknown/Other	33	20				
<b>Total Odour/Fumes</b>	<b>186</b>	<b>126</b>				

**Table 7.2.3: SEA Topic: Water**

SEA Indicator	Quantified information	Comparators and targets	Trends	Issues/constraints	Data source(s)
Water quantity in Special Areas of Conservation and Special Protection Areas	<ul style="list-style-type: none"> <li>Runoff is natural to within 10% at the 95-percentile flow for all rivers in the River Dee SAC (2447km).</li> <li>The Ythan Estuary has been adversely affected by high nitrate levels from agriculture &amp; from the riverbank alterations.</li> </ul>	<ul style="list-style-type: none"> <li>The River Naver (1066km) in the Highlands is also a SAC and its runoff is natural to within 10% at the 95 percentile flow.</li> </ul>	<ul style="list-style-type: none"> <li>Yield of watercourses in the River Dee catchment may decline.</li> <li>The Ythan Project has improved the river.</li> <li>Although the Ythan Project showed some improvement, SNH's monitoring is showing patchy breeding success by some of the SPA species and there is also evidence that the algal mats are spreading onto the mussel beds on which some of these species are entirely dependant.</li> </ul>	<ul style="list-style-type: none"> <li>Qualifying interests in the SACs constrain how the SACs should be used and managed.</li> </ul>	<ul style="list-style-type: none"> <li>Appropriate Assessment meeting for Aberdeenshire Local Plan (11<sup>th</sup> April 2006)</li> <li>Aberdeen and Aberdeenshire Councils (2006) <i>Topic Paper: Strategic Flooding Issues</i></li> <li><a href="http://www.nerc-wallingford.ac.uk">www.nerc-wallingford.ac.uk</a></li> <li><a href="http://www.ythan.org">http://www.ythan.org</a></li> </ul>
Likelihood of flooding from new development	<ul style="list-style-type: none"> <li>Between 2002 and 2004, apart from 9 applications, no large-scale planning applications have been granted planning consent in a flood plain.</li> </ul>	<ul style="list-style-type: none"> <li>Moray Council's Development Plan Review identifies a number of flood alleviation projects currently underway.</li> </ul>	<ul style="list-style-type: none"> <li>Because of "SPP7: <i>Planning and Flooding</i>," future approvals affecting floodplains are unlikely.</li> </ul>	<ul style="list-style-type: none"> <li>Indicator shows a positive significant environmental effect.</li> <li>Local governments lack resources to implement necessary mitigation and adaptation measures</li> </ul>	<ul style="list-style-type: none"> <li>Aberdeenshire Council (2006) <i>Aberdeen and Aberdeenshire Structure Plan 2001-2016: Environment Monitoring Paper (Aberdeenshire)</i></li> </ul>

<p>Ground water and river levels</p>	<ul style="list-style-type: none"> <li>• Water runoff is reduced by public water supply</li> <li>• Runoff is natural to within 10% at the 95 percentile flow for all rivers in the North East.</li> <li>• In 2002, Scottish Water utilised 62% of its permitted water abstraction licence from the River Dee of 145 megalitres per day.</li> <li>• The average water abstraction from the River Dee is 89.9 megalitres per day.</li> </ul>	<ul style="list-style-type: none"> <li>• By the 2080s, summer precipitation in the north of Scotland is predicted to decrease by 10-20% under the low emissions (Global Sustainability), and to decrease by 20-30% under the high-emissions World Markets.</li> </ul>	<ul style="list-style-type: none"> <li>• Increase in water consumption from industrial consumers and from increased residential development.</li> <li>• Increase in leakages from pipe infrastructure as it 'ages'.</li> </ul>	<p>Effects of climate change (such as predicted decrease in summer rainfall) means that</p> <ul style="list-style-type: none"> <li>• water efficient technologies should now be incorporated into new development (industrial and domestic)</li> </ul>	<ul style="list-style-type: none"> <li>• Centre for Hydrology and Ecology (River Flow – gauging stations) (2004): <a href="http://www.nwl.ac.uk/ih/nrfa/station_summaries/op/SEPA-north_map.html">http://www.nwl.ac.uk/ih/nrfa/station_summaries/op/SEPA-north_map.html</a></li> <li>• SEPA: <a href="http://www.sepa.org.uk/data/river_levels/data.htm">http://www.sepa.org.uk/data/river_levels/data.htm</a></li> <li>•</li> </ul>
<p>Water quality (biology and chemistry)</p>	<ul style="list-style-type: none"> <li>• In 2005 there was 1 failure.</li> <li>• In 2006 all bathing water passed the European tests.</li> <li>• Bathing water quality not consistently meeting EC Guideline Standards in Stonehaven, Cruden Bay.</li> <li>• The Ythan estuary is an SPA, so the sensitivity of the area is greater and therefore the overall effect is likely to be more significant than this implies.</li> </ul>	<ul style="list-style-type: none"> <li>• South West Scotland has the poorest bathing water quality principally due to leaching and runoff from agricultural practices (dairy).</li> <li>•</li> </ul>	<ul style="list-style-type: none"> <li>• Aberdeenshire is vulnerable from not-readily absorbed or transformed pollutants (class 4), except the south Highland Boundary Fault (near Stonehaven) &amp; along the Formartine/Buchan coast.</li> </ul>	<ul style="list-style-type: none"> <li>• Impacts on bathing water from future uses, such as the rise in water sports, which could have an adverse impact on water quality.</li> <li>• The Ythan estuary is an SPA, so the sensitivity of the area is greater and therefore the overall effect is likely to be more significant than this implies.</li> </ul>	<ul style="list-style-type: none"> <li>• SEPA:</li> <li>• <a href="http://www.sepa.org.uk/data/bathingwaters/bw2006/north.asp">http://www.sepa.org.uk/data/bathingwaters/bw2006/north.asp</a></li> <li>• <a href="http://www.sepa.org.uk/data/bathingwaters/bw2006/north.asp">http://www.sepa.org.uk/data/bathingwaters/bw2006/north.asp</a></li> <li>• <a href="http://www.sepa.org.uk/pdf/groundwater/tools/vulnerability.pdf">http://www.sepa.org.uk/pdf/groundwater/tools/vulnerability.pdf</a></li> <li>•</li> </ul>

	<ul style="list-style-type: none"> <li>• Length of poor rivers: 51km.</li> <li>• Length of seriously polluted rivers: 2.1km.</li> <li>• No of poor quality watercourse - 10</li> <li>• No of seriously polluted watercourse - 2</li> </ul>	<ul style="list-style-type: none"> <li>• Length of poor rivers in Scotland: 717 km.</li> <li>• Length of seriously polluted rivers in Scotland : 51 km.</li> <li>• No of poor quality watercourse in Aberdeen City-2</li> </ul>	<ul style="list-style-type: none"> <li>• Land based pollution is under stricter control, which has resulted in river quality throughout the North East slowly improving.</li> </ul>	<ul style="list-style-type: none"> <li>• Nitrates from diffuse pollution within the River Ythan catchment has enriched estuarine mudflats such that dense algal mats now affect invertebrate communities living in the mud</li> </ul>	<ul style="list-style-type: none"> <li>• SEPA (River Classification Stretch Data, 2005): <a href="http://www.sepa.org.uk/data/classification/river_classification.htm">http://www.sepa.org.uk/data/classification/river_classification.htm</a></li> <li>• Scottish Biodiversity Forum (2003) <i>Towards a strategy for Scotland's biodiversity: Scotland's Biodiversity Resource and Trends</i></li> </ul>
	<ul style="list-style-type: none"> <li>• The shoreline along Sandford Bay &amp; Boddam (Peterhead Power Station) (4km) is classified as poor.</li> <li>• Peterhead Power Station is likely to be contributing to the poor water quality.</li> </ul>	<ul style="list-style-type: none"> <li>• Other small sections along the coast (Gardenstown, River Don and Stonehaven) also have sections of coastline classified as poor.</li> </ul>	<ul style="list-style-type: none"> <li>• In 2000, industrial effluent pollutes a total length of 58km of coastline in Scotland, representing 22%.</li> <li>• Sewage effluent is the main cause of polluted coastlines (87%).</li> </ul>	<ul style="list-style-type: none"> <li>• In the North East, the release of untreated sewage effluent.</li> </ul>	<ul style="list-style-type: none"> <li>• SEPA (Coastal Classification Stretch Data, 2005): <a href="http://www.sepa.org.uk/data/classification/river_classification.htm">http://www.sepa.org.uk/data/classification/river_classification.htm</a> and <a href="http://www.sepa.org.uk/pdf/data/classification/coastal_waters_classification.pdf">http://www.sepa.org.uk/pdf/data/classification/coastal_waters_classification.pdf</a></li> <li>• Scottish Executive Environment Statistics:</li> </ul>

Coastal Impacts	<ul style="list-style-type: none"> <li>• Use of motorised vehicles on sand dunes.</li> <li>• Balloon releases, and marine litter are damaging the marine environment.</li> </ul>	<ul style="list-style-type: none"> <li>• In the North East, sea borne waste pollution is principally from urban sewage (although this is declining), chemical waste, and agricultural fertilisers.</li> </ul>	<ul style="list-style-type: none"> <li>• The situation is improving because there are only a few places that allow quad-biking legally.</li> <li>• Bathing water quality along the North East coast is improving.</li> </ul>	<ul style="list-style-type: none"> <li>• Major impact both on the sand dune erosion, wildlife and the enjoyment of other beach users.</li> <li>•</li> </ul>	<ul style="list-style-type: none"> <li>• East Grampian Coastal Partnership (Annual Report 2005-06): <a href="http://www.egcp.org.uk/documents/_Toc138674449">http://www.egcp.org.uk/documents/_Toc138674449</a></li> <li>• Marine Conservation Society <a href="http://www.mcsuk.org/mcsaction/pollution/introduction">http://www.mcsuk.org/mcsaction/pollution/introduction</a></li> </ul>
-----------------	--	---	--	---	---



**Table 7.2.4: SEA Topic: Soil**

SEA Indicator	Quantified information	Comparators and targets	Trends	Issues/constraints	Data source(s)
Contaminated land	<ul style="list-style-type: none"> <li>No of statutory identified contaminated – 4.</li> <li>No of potential contaminated sites – 5000</li> </ul>	<ul style="list-style-type: none"> <li>No of statutory identified contaminated in Aberdeen City – 0</li> <li>No of potential contaminated sites – 900</li> </ul> <p>No of registered contaminated in the Northeast – 2.</p>	Legal regime for dealing with contaminated sites means the situation will improve in the future.	Contaminated land places financial and technological constraints on development. These constraints may dictate the type of development: the feasibility of remedial works may determine that a site is only suitable for industrial use; the cost of remedial works may determine that high-density housing is the only viable economic option.	<p>Aberdeen City Council (2001) <i>Contaminated Land Inspection Strategy</i>  <a href="http://www.aberdeencity.gov.uk/acci/web/files/Pollution/ContaminatedLandInspectionStrategy.pdf">http://www.aberdeencity.gov.uk/acci/web/files/Pollution/ContaminatedLandInspectionStrategy.pdf</a></p> <p>Aberdeenshire Council <i>Public Register of Contaminated Land</i></p>
Prime agricultural land (Grades 1 to 3.1)	<ul style="list-style-type: none"> <li>Prime agricultural land is located in the central area (excluding Marr), near Stonehaven.</li> <li>Most Grade 2 prime agricultural land is near Laurencekirk (approx 950ha).</li> </ul>	Aberdeen contains very little prime agricultural land (300ha).	Net loss of Scottish agriculture land from roads, housing and industry has doubled from 588ha in 1989 to 1,402ha in 2003.	Potential impacts of climate will constrain prime agricultural land available in the future.	<p>Scottish Executive Statistics (2005): Economic Report on Scottish Agriculture  <a href="http://www.scotland.gov.uk/Publications/2005/06/2290402/05121">http://www.scotland.gov.uk/Publications/2005/06/2290402/05121</a></p>
Waste disposal in landfill	<ul style="list-style-type: none"> <li>2005 -landfilled BMW: 83,222 tonnes;</li> <li>Recycled/ composted MSW: 15.1% (23,366).</li> <li>BMW landfill allowances for Aberdeenshire are:</li> <li>54,917 tonnes in 2009/10;</li> <li>36,611 tonnes in 2012/13; and</li> <li>27,340 tonnes in 2019/20.</li> </ul>	<ul style="list-style-type: none"> <li>2005 - landfilled (City) BMW: 70,773 tonnes;</li> <li>Recycled/ composted MSW: 16.5% (22,500 tonnes) (this has increased to 22% in 2005/06</li> <li>Aberdeenshire's</li> </ul>	<ul style="list-style-type: none"> <li>The trend is improving because Aberdeenshire Council is focussing on waste minimisation, and recycling second, hence the lower %.</li> <li>It is expected that the level of recycling will continue to rise.</li> </ul>	<ul style="list-style-type: none"> <li>Limited sites for recycling or composting biodegradable municipal waste (large, medium or small scale) to help the local authorities achieve their recycling and landfill targets</li> </ul>	<ul style="list-style-type: none"> <li>North East Scotland Area Waste Plan (2003)  <a href="http://www.sepa.org.uk/nws/areas/north_east/awp/2.4.html">http://www.sepa.org.uk/nws/areas/north_east/awp/2.4.html</a></li> <li>Aberdeen City Council  <a href="http://www.aberdeen.gov.uk/acci/we">http://www.aberdeen.gov.uk/acci/we</a></li> </ul>

	<ul style="list-style-type: none"> <li>•</li> </ul>	recycling targets: <ul style="list-style-type: none"> <li>• 2005/06 – 17%</li> <li>• 2006/07 – 22%</li> </ul>			<ul style="list-style-type: none"> <li>• <a href="http://www.scotland.gov.uk/Resource/Doc/113890/0027685.pdf">b/site/Rubbish/rub_WasteStrategy.asp</a> <a href="http://www.scotland.gov.uk/Resource/Doc/113890/0027685.pdf">http://www.scotland.gov.uk/Resource/Doc/113890/0027685.pdf</a></li> </ul>
Soil erosion	<ul style="list-style-type: none"> <li>• The coastline is largely eroding, but parts are being replenished with sand and gravel from larger rivers.</li> </ul>	<ul style="list-style-type: none"> <li>• From Berwick to Aberdeen, the coastline is eroding, but is stable where there are rocky coasts or coastal defences.</li> <li>• .</li> </ul>	<ul style="list-style-type: none"> <li>• Upland schemes such as wind farm access roads and recreation tracks (e.g. mountain biking) on steep ground can increase surface water runoff and lead to significant soil loss (e.g. gullies).</li> </ul>	<ul style="list-style-type: none"> <li>• Predicted climate change, bad land use practices, such as locating tracks/access roads on steep/ upland ground as well as increasing use of motorised vehicles on sand dunes is contributing to coastal erosion.</li> </ul>	<ul style="list-style-type: none"> <li>• Aberdeen and Aberdeenshire Councils (2006) <i>Strategic Flooding Issues Topic Paper</i></li> <li>• Office of Science and Technology (2005) Foresight report: <i>Future Flooding Scotland</i></li> <li>• <a href="http://www.snh.org.uk/pdfs/publications/commissioned_reports/F00AC106.pdf">http://www.snh.org.uk/pdfs/publications/commissioned_reports/F00AC106.pdf</a></li> </ul>
Waste tonnage	Aberdeenshire <ul style="list-style-type: none"> <li>• Sept 06 - 75,842</li> <li>• Mar 07 - 69,313</li> <li>• Sept 07 - 81,527</li> </ul>	No Comparators	Increasing		Aberdeenshire Council Monitoring Plan 2008
	Tonnage of waste to landfill <ul style="list-style-type: none"> <li>• Sept 06 – 62,209</li> <li>• Mar 07 - 52,195</li> <li>• Sept 07 - 58,347</li> </ul>	No Comparators	Increasing		Aberdeenshire Council Monitoring Plan 2008
	Tonnage of waste recycled <ul style="list-style-type: none"> <li>• Sept 06 –13,633</li> <li>• Mar 07 - 17,118</li> <li>• Sept 07 - 23,180</li> </ul>	No Comparators	Improving		Aberdeenshire Council Monitoring Plan 2008

	Percentage of waste recycled <ul style="list-style-type: none"><li>• Sept 06 – 18%</li><li>• Mar 07 - 24.7%</li><li>• Sept 07 - 28.4%</li></ul>	No Comparators	Improving		Aberdeenshire Council Monitoring Plan 2008
--	---	----------------	-----------	--	---

**Table 7.2.5: SEA Topic: Biodiversity**

SEA Indicator	Quantified information	Comparators and targets	Trends	Issues/constraints	Data source(s)
North East Biodiversity Action Plan (NE BAP) targets	<p>Transformed habitats resulting from:</p> <ul style="list-style-type: none"> <li>• farm intensification &amp;</li> <li>• inappropriate habitat “creation”</li> <li>• No of action plans for habitats identified in the NE BAP - 20 out of 26.</li> <li>• Action plans being developed – for upland species-rich grassland, coastal cliffs and heaths, marine habitats, broadleaf woodland, heathland, lochs and ponds, and wetlands</li> </ul>	<ul style="list-style-type: none"> <li>• Status of UK BAP priority species in Scotland in 2005: <ul style="list-style-type: none"> <li>• Stable: 56 (27%)</li> <li>• Increase: 11 (5%)</li> <li>• Extinct: 5 (3%)</li> <li>• Declining (accelerating): 11 (5%)</li> <li>• Declining (slowing): 18 (9%)</li> <li>• Fluctuating: 3 (1%)</li> <li>• Unknown: 90 (44%)</li> </ul> </li> <li>• Status of UK BAP priority habitats in Scotland in 2005: <ul style="list-style-type: none"> <li>• Stable: 8 (27%)</li> <li>• Increase: 5 (13%)</li> <li>• Declining (accelerating): 0</li> <li>• Declining (slowing): 12 (30%)</li> <li>• Fluctuating: 0</li> <li>• Unknown: 11 (28%)</li> </ul> </li> </ul>	<ul style="list-style-type: none"> <li>• NE BAP is meeting the targets for preparing action plans, as set out in the UK BAP.</li> <li>• UK BAP 2005 trends show that: <ul style="list-style-type: none"> <li>• 10 habitats (22%) and 42 species (11%) are increasing.</li> <li>• 17 habitats (39%) are thought to be declining, although this decline is slowing for 11 (25%) habitats.</li> <li>• 102 species (27%) are thought to be declining, but the decline is slowing for 36 (10%) species.</li> <li>• UK trend was unknown for 11 habitats (24%) and 47 species (13%).</li> <li>• Changes in farm practices have increased habitat and species numbers.</li> </ul> </li> </ul>	<ul style="list-style-type: none"> <li>• Threat of Alien Species effecting water quality and ecological status of the rivers.</li> <li>• Native species and habitats are increasing, and the NE BAP is meeting the UK BAP targets, but UK priority species and habitats are still declining and require rigorous protection and enhancement.</li> <li>• Implementation of the NE BAPs is the key issue to enhancing biodiversity.</li> <li>• Equally, a constraint would be the loss of funding/support to complete that work</li> </ul>	<ul style="list-style-type: none"> <li>• Scottish Executive (2006) <i>Key Scottish Environment Statistics</i>: <a href="http://www.scotland.gov.uk/Resource/Doc/921/0036584.pdf">http://www.scotland.gov.uk/Resource/Doc/921/0036584.pdf</a></li> <li>• UK BAP targets for Local Biodiversity Action Plans <a href="http://www.ukbap.org.uk/library/brig/trgtargets/ScotlandLBAPTTargets.xls">http://www.ukbap.org.uk/library/brig/trgtargets/ScotlandLBAPTTargets.xls</a></li> <li>• NE Biodiversity Action Plan: <i>Action Plans</i>: <a href="http://www.nesbiodiversity.org.uk/habactionplan.htm">www.nesbiodiversity.org.uk/habactionplan.htm</a></li> <li>• See survey work being done by the Council, using the Integrated Habitat Survey (IHS).</li> </ul>
Designated areas	<ul style="list-style-type: none"> <li>• There are 28 Natura sites in Aberdeenshire, which have implications for development.</li> <li>• No monitoring of SINS has been undertaken, but they are under review.</li> </ul>	<ul style="list-style-type: none"> <li>• Scotstown Moor SSSI in Aberdeen is subject to indirect development pressure due to changes in the water table adjacent development, which is affecting flush and bog habitats.</li> <li>• Dee SAC is the only in</li> </ul>	Housing pressure on designations are increasing		<ul style="list-style-type: none"> <li>• Aberdeen and Aberdeenshire Council (2006) <i>Natural Heritage Topic Paper</i></li> <li>• <a href="http://www.snh.org.uk/publications/online/corporate/factsandfigures/0405/index.htm">http://www.snh.org.uk/publications/online/corporate/factsandfigures/0405/index.htm</a></li> </ul>

		affecting the City			
Sites of Special Scientific Interests (SSSIs)	In Aberdeenshire there are 82 SSSIs occupying 39805 hectares and taking about 6.3% land.	There are 3 SSSIs in Aberdeen City occupying 47 hectares and taking about 0.2% of the City's land area. 12.92% of Scotland's land areas accommodate 1,455 SSSIs occupying about 1,036, 553 hectares of land	No trend	Development will put pressure on the resource	SNH (2004) <i>SNH Facts &amp; Figures 2003/2004.</i> <i>Battleby: SNH</i>
Special Areas of Conservation (SAC)	5.6% of Aberdeenshire land area accommodates 18 SACs which occupy 35, 334 hectares of land	There is only 1 SAC (Dee SAC) in Aberdeen City it also affects Aberdeenshire  There are 238 SACs in Scotland occupying 962, 667 hectares representing 9.9% Scotland's land take.	No trend	Development will put pressure on the resource	SNH (2004) <i>SNH Facts &amp; Figures 2003/2004.</i> <i>Battleby: SNH</i>
Special Protection Areas (SPA)	There are 10 SPAs in Aberdeenshire occupying 29,926 hectares representing 4.7% Aberdeenshire's land take.	There are 142 SPAs in Scotland occupying 630305 hectares representing 8% Scotland's land take.	No trend	Development will put pressure on the resource	SNH (2004) <i>SNH Facts &amp; Figures 2003/2004.</i> <i>Battleby: SNH</i>
Country Parks (CP)	Aberdeenshire has 4 CPs on 276 hectares of land and this represents 0.04% of the total land area.	0.08 % of Scotland's land area accommodates 36 CPs which occupy 6, 481 hectares of land	No trend	Development will put pressure on the resource	SNH (2004) <i>SNH Facts &amp; Figures 2003/2004.</i> <i>Battleby: SNH</i>
Local Nature Reserves (LNR)	0.004 % of Aberdeenshire land area accommodates 2 LNRs which occupy 28 hectares of land	Aberdeen City has 4 LNRs on 126 hectares of land and this represents 0.6% of the total land area.  Scotland has 36 LNRs on 9410 hectares of land and	No trend	Development will put pressure on the resource	SNH (2004) <i>SNH Facts &amp; Figures 2003/2004.</i> <i>Battleby: SNH</i>

		this represents 0.12% of the total land area.			
National Nature Reserves (NNR)	2.2% of Aberdeenshire land area accommodates 6 NNRs which occupy 14225 hectares of land	1.5 % of Scotland's land area accommodates 63 NNRs which occupy 111913 hectares of land	No trend	Development will put pressure on the resource	SNH (2004) <i>SNH Facts &amp; Figures 2003/2004.</i> <i>Battleby: SNH</i>
Ramsar sites	There are 4 Ramsar sites in Aberdeenshire occupying 1239 hectares representing 0.2% Aberdeenshire's land take.	There are 51 Ramsar sites in Scotland occupying 313181 hectares representing 4.2% Scotland's land take.	No trend	Development will put pressure on the resource	SNH (2004) <i>SNH Facts &amp; Figures 2003/2004.</i> <i>Battleby: SNH</i>
Number of access issues logged	<p>Banff &amp; Buchan</p> <ul style="list-style-type: none"> <li>• Sept 06 - 0</li> <li>• Mar 07 - 0</li> <li>• Sept 07 - 1</li> </ul> <p>Buchan</p> <ul style="list-style-type: none"> <li>• Sept 06 - 2</li> <li>• Mar 07 - 1</li> <li>• Sept 07 - 5</li> </ul> <p>Kincardine &amp; Mearns</p> <ul style="list-style-type: none"> <li>• Sept 06 - 14</li> <li>• Mar 07 - 2</li> <li>• Sept 07 - 12</li> </ul> <p>Marr</p> <ul style="list-style-type: none"> <li>• Sept 06 - 5</li> <li>• Mar 07 - 7</li> <li>• Sept 07 - 5</li> </ul> <p>Garioch</p> <ul style="list-style-type: none"> <li>• Sept 06 - 2</li> <li>• Mar 07 - 2</li> <li>• Sept 07 - 9</li> </ul>	No comparators	Improving		To be dealt with under the Land Reform or Countryside (Scotland) Act

	<p>Formartine</p> <ul style="list-style-type: none"><li>• Sept 06 - 1</li><li>• Mar 07 - 1</li><li>• Sept 07 – 1</li></ul> <p>Aberdeenshire</p> <ul style="list-style-type: none"><li>• Sept 06 - 24</li><li>• Mar 07 - 13</li><li>• Sept 07 – 33</li></ul>				
--	---	--	--	--	--

**Table 7.2.6: SEA Topic: Climatic Factors**

SEA Indicator	Quantified information	Comparators and targets	Trends	Issues/constraints	Data source(s)
Proportion of heat and electricity generated from renewable energy sources and Combined Heat and Power (CHP) schemes.	<ul style="list-style-type: none"> <li>• Little uptake in renewable energy developments.</li> <li>• Only a handful of planning applications have been received for CHP and biomass heating systems.</li> <li>•</li> </ul>	<ul style="list-style-type: none"> <li>• SE targets: 40% (6GW) of Scotland's electricity generated to be generated from renewable sources by 2020.</li> <li>• UK targets: 10% of the UK's electricity generated to be generated from renewable sources by 2010.</li> </ul>	<ul style="list-style-type: none"> <li>• Things are likely to improve in the future through Aberdeenshire Council's SPG on Renewables</li> </ul>	<ul style="list-style-type: none"> <li>• Insufficient grid connections and constraints with certain types of renewable energy technologies.</li> <li>• Lack of appropriate locations identified for renewable energy technologies.</li> </ul>	<ul style="list-style-type: none"> <li>• The Scottish Wind Assessment Project (2005) <i>Gazetteer of wind power in Scotland</i></li> <li>• <i>Scottish Planning Policy (SPP) 6: Renewable Energy</i></li> <li>• Aberdeenshire Council (2004) <i>The Renewable Energy Strategy:</i></li> <li>• Aberdeenshire Council (2006) Use of micro-renewable energy in Aberdeenshire</li> </ul>
Carbon dioxide (CO <sub>2</sub> ) emissions	<ul style="list-style-type: none"> <li>• In Aberdeenshire an average dwelling house produces 6,318 kg CO<sub>2</sub>,</li> <li>• Total road traffic is forecast to grow by between 22%-34% for the period 2002-2011.</li> </ul>	<ul style="list-style-type: none"> <li>• In Aberdeen an average dwelling house produces 5,175 kg CO<sub>2</sub>.</li> <li>• Kyoto Protocol (1997) CO<sub>2</sub> targets are 12.5% below 1990 baseline – Scottish emissions in 2002 were 6% lower.</li> </ul>	<ul style="list-style-type: none"> <li>• Overall greenhouse gases are decreasing, but Aberdeenshire produces the highest amount of carbon dioxide in Scotland.</li> <li>• The majority of CO<sub>2</sub> emissions are from the burning of fossil fuels to generate power (principally electricity).</li> </ul>	<ul style="list-style-type: none"> <li>• The current layout of low-density housing does not reduce energy use (e.g. reducing wind chill, maximising solar gain).</li> <li>• Materials with high CO<sub>2</sub> levels are still increasingly popular (e.g. concrete and tarmac).</li> </ul>	<ul style="list-style-type: none"> <li>• Best Foot Forward (2006) <i>Domestic Carbon Dioxide Emissions for Selected Cities</i>, British Gas <a href="http://www.britishgasnews.co.uk/managed_content/files/pdf/greenCity.pdf">http://www.britishgasnews.co.uk/managed_content/files/pdf/greenCity.pdf</a></li> <li>• <a href="http://www.airquality.co.uk/archive/reports/cat07/050921132_1_Reghg_report_2003_Main_Text_Issue_1.doc">http://www.airquality.co.uk/archive/reports/cat07/050921132_1_Reghg_report_2003_Main_Text_Issue_1.doc</a>,</li> <li>• Aberdeen and Aberdeenshire Councils (2006) <i>Topic Paper: Energy</i>, Aberdeenshire Council</li> </ul>



Areas affected by flooding (sea)	<ul style="list-style-type: none"> <li>1,743 properties in Aberdeenshire are located within the indicative floodplain or coastal area below 5 meters Ordnance Datum (OD).</li> <li>Settlements likely to be affected by rising sea levels are</li> <li>Harbours of Haserburgh, Peterhead,</li> <li>Stonehaven &amp; the town centre of Stonehaven, Cowie; &amp; Banff (east side)</li> </ul>	<ul style="list-style-type: none"> <li>571 properties in Aberdeen are located within the indicative floodplain</li> <li>In Scotland, the number of residential properties in coastal areas below 5m OD is 86,793</li> <li>The number of commercial properties in coastal areas below 5m OD is 7,037.</li> </ul>	<ul style="list-style-type: none"> <li>Storm surges represent a less severe threat in the North East, as there are a high proportion of rocky coasts.</li> <li>Storm surges are predicted to rise by 5m, although they will be much lower further north.</li> </ul>	<ul style="list-style-type: none"> <li>Possible need for a management retreat of those settlements below the 5m Ordnance Datum mark.</li> <li>Sea defensive walls may be inadequate as sea levels rise because of climate change.</li> </ul>	<ul style="list-style-type: none"> <li>Office of Science and Technology (2005) Foresight report: <i>Future Flooding Scotland</i> <a href="http://www.foresight.gov.uk/Previous_Projects/Flood_and_Coastal_Defence/Reports_and_Publications/Scotland/final_scotland.pdf">http://www.foresight.gov.uk/Previous_Projects/Flood_and_Coastal_Defence/Reports_and_Publications/Scotland/final_scotland.pdf</a></li> <li>Aberdeen and Aberdeenshire Councils (2006) <i>Topic Paper: Strategic Flooding Issues</i>, Aberdeenshire Council</li> <li>SEPA's second generation Indicative Floodplain Maps (1 in 200 year flood event)</li> </ul>
Areas affected by flooding (fluvial)	<ul style="list-style-type: none"> <li>2,219 properties in Aberdeenshire (out of 95,174) are located within the indicative floodplain.</li> <li>Those settlements that are most likely to be affected by fluvial flooding (1 in 200yr) are: Fraserburgh, Turriff, Longside, Huntly, Kintore, Banchory, Newtonhill</li> </ul>	<ul style="list-style-type: none"> <li>309 properties in Aberdeen (out of 104,543) are located within the indicative floodplain.</li> <li>In Scotland, the number of residential properties within inland floodplains is 71,402.</li> </ul>	<ul style="list-style-type: none"> <li>Compared with the rest of Scotland, far fewer properties in Aberdeen and Aberdeenshire are at significant risk from flooding. The implementation of</li> <li>National guidance (SPP7: <i>Planning and Flooding</i>) will improve the situation</li> </ul>	<p>Effects of climate change will</p> <ul style="list-style-type: none"> <li>create greater need for SuDS and local flood defensive schemes</li> <li>restrict location of new developments</li> </ul>	<ul style="list-style-type: none"> <li>Office of Science and Technology (2005) Foresight report: <i>Future Flooding Scotland</i> <a href="http://www.foresight.gov.uk/Previous_Projects/Flood_and_Coastal_Defence/Reports_and_Publications/Scotland/final_scotland.pdf">http://www.foresight.gov.uk/Previous_Projects/Flood_and_Coastal_Defence/Reports_and_Publications/Scotland/final_scotland.pdf</a></li> <li>Aberdeen and Aberdeenshire Councils (2006) <i>Topic Paper: Strategic Flooding Issues</i>, Aberdeenshire Council</li> </ul>
Areas affected by flooding (pluvial)	<ul style="list-style-type: none"> <li>72% of flood problems reported relate to urban drainage problems.</li> <li>Settlements in</li> </ul>	<ul style="list-style-type: none"> <li>Only a handful of sites in Aberdeen are affected by pluvial flooding, due to</li> </ul>	<ul style="list-style-type: none"> <li>Sewers designed to a 1:30 year return period will be over stretched resulting in an</li> </ul>	<p>Effects of climate change will</p> <ul style="list-style-type: none"> <li>create greater need</li> </ul>	<ul style="list-style-type: none"> <li>*Aberdeenshire Council (2005) <i>Flooding in Aberdeenshire: Fifth Biennial Report</i></li> <li>Aberdeen and Aberdeenshire</li> </ul>

	Aberdeenshire that are affected by pluvial flooding include Huntly, Turriff and Westhill.	culverts being too small for surface water run-off during heavy rain.	increased requirement of SuDS in all development schemes.	for SuDS in urban areas.	Councils (2006) <i>Topic Paper: Strategic Flooding Issues</i> , Aberdeenshire Council
Priority Species	<ul style="list-style-type: none"> <li>26 North East Local Biodiversity Action Plans are required to safeguard priority habitats and priority species</li> </ul>	<ul style="list-style-type: none"> <li></li> </ul>	<p>Effects of climate change is</p> <ul style="list-style-type: none"> <li>is pushing some bird and fish species further north.</li> <li>Birch species may increase in pinewoods, and the tree line may shift from its current line (650m).</li> <li>Arctic-alpine habitats and arctic species, such as the snow bunting may disappear</li> </ul>	<ul style="list-style-type: none"> <li>Need to promote appropriate native species in new development schemes to enhance existing biodiversity and preventing the spread of non-native species.</li> </ul>	<ul style="list-style-type: none"> <li>Scottish Executive (2004) <i>Scotland's Biodiversity: It's In Your Hands – A strategy for the conservation and enhancement of biodiversity in Scotland</i> <a href="http://www.scotland.gov.uk/Resource/Doc/25954/0014583.pdf">http://www.scotland.gov.uk/Resource/Doc/25954/0014583.pdf</a></li> <li>NE Biodiversity Action Plan: <a href="http://www.nesbiodiversity.org.uk/habitactionplan.htm">www.nesbiodiversity.org.uk/habitactionplan.htm</a></li> </ul>
Impact on natural resources	<ul style="list-style-type: none"> <li>Aberdeenshire's annual global footprint:</li> <li>Total: 5.60gha/p</li> <li>Energy consumption: 1.09ha/person (19%)</li> <li>Food and drink: 1.11ha/person (20%)</li> <li>Land travel: 0.74ha/p (13%)</li> <li>Other: 2.7gha/p (48%)</li> </ul>	<ul style="list-style-type: none"> <li>Aberdeen's annual global footprint (in global hectares per person (gha/p):</li> <li>Total: 5.80gha/p</li> <li>Energy consumption: 1.14gha/p (20%)</li> <li>Food and drink: 1.07gha/p (19%)</li> <li>Land travel: 0.81ha/p (14%)</li> </ul>	<ul style="list-style-type: none"> <li>The main contributors to the NE's global footprint are energy consumption, food and drink, and land travel.</li> </ul>	<ul style="list-style-type: none"> <li>Aberdeenshire footprint is increasing and this cannot be sustained in the long-term.</li> </ul>	<ul style="list-style-type: none"> <li>North East Global Footprint Project <a href="http://www.scotlandfootprint.org/the_project/north_east.php">http://www.scotlandfootprint.org/the_project/north_east.php</a></li> <li>Aberdeen City Council and Aberdeenshire Council (2006) <i>Scotland's Global Footprint Project - Reduction Report for North East Scotland Global Footprint Project</i>,</li> </ul>
Impact on year-round services	<ul style="list-style-type: none"> <li>Rise in sea level will affect services and maintenance works, and costs the Council height</li> </ul>		<ul style="list-style-type: none"> <li>Increase in winter precipitation, including snow melts and storms will affect drainage</li> </ul>	<ul style="list-style-type: none"> <li>Increasing need for service provision throughout the year</li> </ul>	<ul style="list-style-type: none"> <li>Office of Science and Technology (2005) Foresight report: <i>Future Flooding Scotland</i></li> </ul>

	to 4.7m (a spring tide is 4.5m)		pipe, road and rail infrastructure.		
Perception that Aberdeenshire Council is environmentally friendly	<p>2004 – 51%*</p> <p>2006 – 51%</p> <p>Council's help to others to behave in an environmentally friendly-</p> <p>2004 – 33%</p> <p>2006 – 37%</p>				The Residents' Survey published in October 2006

**Table 7.2.7: SEA Topic: Human Health**

SEA Indicator	Quantified information	Comparators and targets	Trends	Issues/ constraints	Data source(s)
Quality and availability of public open space in urban and rural areas	<ul style="list-style-type: none"> <li>• Need for larger areas of open spaces, including civic or town parks.</li> <li>• There is pressure to reduce the size of open spaces in residential developments.</li> </ul>	<ul style="list-style-type: none"> <li>• Aberdeen City has development pressure as well</li> </ul>	<ul style="list-style-type: none"> <li>• The pressure from private developers to develop on open space will continue.</li> <li>• There is growing demand for safer and more accessible areas of open space, which has promoted the creation of PAN65.</li> </ul>	There is a lack of government funding to allow local authorities to continuously manage areas of open space.	<ul style="list-style-type: none"> <li>• Aberdeen City Council (2002) <i>State of the Environment Report</i> <a href="http://www.aberdeencity.gov.uk/ACCI/nmsruntime/saveasdialog.asp?IID=2424&amp;SID=883">http://www.aberdeencity.gov.uk/ACCI/nmsruntime/saveasdialog.asp?IID=2424&amp;SID=883</a></li> <li>• Scottish Executive (2003) <i>Planning Advice Note 65: Planning and Open Space</i></li> <li>• .Scottish Executive (2006) Consultative draft <i>Scottish Planning Policy 11: Physical Activity and Open Space</i></li> </ul>

<p>Improvements to quality of life in currently deprived areas</p>	<ul style="list-style-type: none"> <li>• Aberdeenshire ranks high 31<sup>st</sup> out of 32 councils in terms of multiple deprivation*.</li> <li>• The most deprived areas</li> <li>• are Banff and Buchan and Buchan, Fraserburgh Peterhead and Huntly</li> <li>• Strathbogie, Echt, Upper Ythan, Inch, Donside and Cromar, Fyvie-Methlick, Aboyne, Upper Deeside, Tarves, and Udy-Slains comprise the worst 5% wards due to poor access to services.</li> <li>•</li> </ul>	<ul style="list-style-type: none"> <li>• Aberdeen ranked 23<sup>rd</sup>* in terms of multiple deprivation.</li> <li>• In Aberdeen City, the highest levels of deprivation are located in Woodside, Tillydrone, Middlefield, Northfield, Cummings Park, Torry and Seaton neighbourhoods.</li> </ul>	<ul style="list-style-type: none"> <li>• The trend is improving</li> </ul>	<p>Poor access to services in rural areas; centralisation of service provision, &amp; low job opportunities and income could be</p>	<ul style="list-style-type: none"> <li>• Aberdeenshire Council (2004) <i>Scottish Index of Multiple Deprivation (Oxford Report) – Aberdeenshire: Key findings</i> <a href="http://www.aberdeenshire.gov.uk/statistics/economic/SIMD%20Aberdeenshire%20Key%20Findings%202004.pdf">http://www.aberdeenshire.gov.uk/statistics/economic/SIMD%20Aberdeenshire%20Key%20Findings%202004.pdf</a></li> <li>• Aberdeen City: Community Planning Regeneration Masterplans (2006/7) <a href="http://www.communityplanningaberdeen.org.uk/Web/Site/Internet/RegenerationMasterplans.asp">http://www.communityplanningaberdeen.org.uk/Web/Site/Internet/RegenerationMasterplans.asp</a></li> </ul>
<p>Sport and recreation facilities in areas of identified need</p>	<ul style="list-style-type: none"> <li>• In Aberdeenshire, there is still an outstanding need for:</li> <li>• 16.66m x 8.5m pool at Mintlaw;</li> <li>• 6 Badminton Court Hall at Peterhead and Fraserburgh</li> <li>• 56m x 26m ice rink at Peterhead.</li> </ul>	<ul style="list-style-type: none"> <li>• In Aberdeen, there is still an outstanding need for:</li> <li>• sports facilities in Cove;</li> <li>• junior golf course;</li> <li>• a new Stadium and Soccer Academy;</li> <li>• one water based pitches and 2 sand based pitches; and</li> <li>• 50m swimming pool.</li> </ul>	<ul style="list-style-type: none"> <li>• Positive steps have been made to ensure everyone has access to sport, leisure and recreation facilities, however limited progress has been made to provide</li> <li>• :</li> <li>•</li> </ul>	<ul style="list-style-type: none"> <li>• <b>Sportscotland</b> strategy sets out 11 targets to be achieved by 2007, which focus on:</li> <li>• ensuring that most of the population is taking part in sport at least once a week;</li> </ul>	<ul style="list-style-type: none"> <li>• Aberdeen City Council (2002) <i>Active Aberdeen 2002-2007: A sport, recreation and physical activity strategy for Aberdeen City</i></li> <li>• Aberdeenshire Council (2005) <i>Sports Facility Study Updated Report</i></li> <li>• <b>sportscotland</b> (2003)</li> </ul>

				•	<i>Sport 21: 2003 – 2007: The National Strategy for Sport – Shaping Scotland’s Future</i>
Cause of mental health (especially of poorer communities)	<ul style="list-style-type: none"> <li>• Overcrowding: Aberdeenshire – 12,536 (6%)</li> <li>• Private rented sector and Council stock are higher than in RSL stock or owner-occupied housing</li> <li>• Quality of life/health: Aberdeenshire – Good: 73%</li> <li>• Fairly good: 20%</li> <li>• Not good: 7%</li> <li>• *Most common house type: Aberdeenshire - semi-detached (30%);</li> <li>• *Most common house type granted planning consent (units over 20): Aberdeenshire - detached (74%);</li> </ul>	<ul style="list-style-type: none"> <li>• Overcrowding: Aberdeen – 5,054 (13%)</li> <li>• Private rented sector and Council stock are higher than in RSL stock or owner-occupied housing</li> <li>• Quality of life/health: Aberdeen – Good: 70%</li> <li>• Fairly good: 21%</li> <li>• Not good: 9%</li> <li>• *Most common house type: Aberdeen – flats (49%)</li> <li>• *Most common house type granted planning consent (units over 20): Aberdeen – flats (76%)</li> <li>•</li> </ul>	<ul style="list-style-type: none"> <li>• Differences in housing stock between the City and Shire will become more extreme.</li> </ul>	<ul style="list-style-type: none"> <li>• It is envisaged that future structure plan will make more provision for housing</li> </ul>	<p>NHS Grampian (2004) <i>Mental Health and Wellbeing Needs Assessment</i>, Public Health Unit</p> <p>Aberdeen City and Aberdeenshire Councils (2006) <i>Topic Paper: Characteristics of the Housing Stock</i></p> <p>Aberdeen and Aberdeenshire Council <i>Housing Needs Assessment 2004: Housing Market Area Report</i></p> <p>Shelter: <a href="http://scotland.shelter.org.uk/advice/advice-4035.cfm">http://scotland.shelter.org.uk/advice/advice-4035.cfm</a> Register for General Scotland (2006) <i>Mid-2005 Population Estimates</i></p>

<p>% of residents feeling safe after dark</p>	<p>October 2006 - 62% January 2008 - 87%</p>	<p>No Comparators</p>	<p>Improving</p>	<p>In the Citizens Panel consultation results published in January 2008 the top 3 issues for agencies to tackle were: Antisocial driving; Teenagers/ children causing a nuisance; Graffiti/vandalism.</p>	<p>(based on Residents Survey)</p>
<p>Number of casualties on the road</p>	<p>% change in killed and seriously injured based on 1994-1998 average 219</p> <ul style="list-style-type: none"> <li>• Sept 06 - 22.4%</li> <li>• March 06 – 24.2%</li> <li>• Sept 07 – 37.4%</li> </ul> <p>% change in all child casualties based on 1994-1998 average 115</p> <ul style="list-style-type: none"> <li>• Sept 06 – 50.4%</li> <li>• March 06 – 44.3%</li> <li>• Sept 07 – 58.3%</li> </ul>	<p>National Target 40% by 2010</p>	<p>Worsening</p>	<p>National Targets relate to 1994-1998 averages. Figures shown based on accidents in previous 12 mths.</p>	<p>In the Citizens Panel consultation results published in January 2008, 79% of those consulted saw Road Safety as a priority for the Community Safety Partnership.</p>

Table 7.2.8: SEA Topic: Population

SEA Indicator	Quantified information	Comparators and targets	Trends	Issues/constraints	Data source(s)
Changing trends in household size	<ul style="list-style-type: none"> <li>• Aberdeenshire household figures:</li> <li>• 2003 – 93,800</li> <li>• 2021 – 104,300</li> <li>• Aberdeenshire household size figures:</li> <li>• 2003 – 2.41</li> <li>• 2021 – 2.24</li> </ul>	<ul style="list-style-type: none"> <li>• Aberdeen household figures:</li> <li>• 2003 – 98,380</li> <li>• 2021 – 107,610</li> <li>• Aberdeen household size figures:</li> <li>• 2003 – 2.04</li> <li>• 2021 – 1.83</li> <li>• Average household size in Scotland is 2.27.</li> <li>•</li> </ul>	<ul style="list-style-type: none"> <li>• Household numbers predicted to increase.</li> <li>• 16,040 more houses are required in the Aberdeen Housing Market Area</li> <li>• 6,880 more houses are required in the Rural Housing Market Area</li> <li>• Household size predicted to decrease.</li> </ul>	<ul style="list-style-type: none"> <li>• Increasing number of households is creating more demand for housing (and land).</li> <li>• Possibility that the need for more development land could put pressure on or near sensitive natural heritage areas.</li> </ul>	<ul style="list-style-type: none"> <li>• Aberdeen and Aberdeenshire Council's (2004) <i>Strategic Forecasts 2003-2021</i>: <a href="http://www.aberdeencity.gov.uk/ACCI/nmsruntime/saveasdialog.asp?IID=1720&amp;SID=332">http://www.aberdeencity.gov.uk/ACCI/nmsruntime/saveasdialog.asp?IID=1720&amp;SID=332</a></li> <li>• General Register Office for Scotland: News Release – Household estimates for 2005 <a href="http://www.gro-scotland.gov.uk/press/news2005/drop-in-number-of-vacant-dwellings-and-second-homes-in-scotland.html">http://www.gro-scotland.gov.uk/press/news2005/drop-in-number-of-vacant-dwellings-and-second-homes-in-scotland.html</a></li> </ul>



	<ul style="list-style-type: none"> <li>Change in Aberdeenshire age structure of head of household between 2003 and 2021: <ul style="list-style-type: none"> <li>30-44yrs: -6,660</li> <li>60+: 16,700</li> </ul> </li> </ul>	<ul style="list-style-type: none"> <li>Change in Aberdeen age structure of head of household between 2003 and 2021: <ul style="list-style-type: none"> <li>30-44yrs: -2,870</li> <li>60+: +5,730</li> </ul> </li> <li>Average age in 2005 in Scotland is 38 (m) and 41 (f).</li> </ul>	<ul style="list-style-type: none"> <li>In the North East, the number of households headed by people aged 60+ is predicted to increase by 50%.</li> <li>The number of households headed by people aged 30-44 is predicted to fall by 6,660, a decrease of 25%</li> </ul>	<ul style="list-style-type: none"> <li>The growing age of the head of the household may result in more homes needed for their needs (e.g. bungalows or special needs dwellings).</li> </ul>	<ul style="list-style-type: none"> <li>Aberdeen and Aberdeenshire Council's (2004) <i>Strategic Forecasts 2003-2021</i>: <a href="http://www.aberdeencity.gov.uk/ACCI/nmsruntime/saveasdialog.asp?IID=1720&amp;slD=332">http://www.aberdeencity.gov.uk/ACCI/nmsruntime/saveasdialog.asp?IID=1720&amp;slD=332</a></li> </ul>
Years of healthy life expectancy	<ul style="list-style-type: none"> <li>Life expectancy in Aberdeenshire: <ul style="list-style-type: none"> <li>Male 75.5 years</li> <li>Females 80.2 years</li> </ul> </li> </ul>	<ul style="list-style-type: none"> <li>Life expectancy in Aberdeen: <ul style="list-style-type: none"> <li>Male 73.6 years</li> <li>Females 78.9 years</li> </ul> </li> <li>Life expectancy in Scotland: <ul style="list-style-type: none"> <li>Male 73.8 years</li> <li>Females 79.1 years</li> </ul> </li> </ul>	<ul style="list-style-type: none"> <li>Life expectancy at birth for Scots continues to improve, and recent trends show a slight narrowing of the gap between males and females to around 5.3 years in 2002-2004.</li> </ul>	<ul style="list-style-type: none"> <li>Aging population will create demand for certain types of houses (e.g. bungalows and services (increasing the need for more land) and care homes.</li> </ul>	<ul style="list-style-type: none"> <li>Scottish Executive Statistics (2006) <i>Life expectancy</i> <a href="http://www.scotland.gov.uk/Topics/Statistics/Browse/Health/TrendLifeExpectancy">http://www.scotland.gov.uk/Topics/Statistics/Browse/Health/TrendLifeExpectancy</a></li> </ul>
Size of population	<ul style="list-style-type: none"> <li>Aberdeenshire population figures: <ul style="list-style-type: none"> <li>2003 - 229,330</li> <li>2021 - 229,353</li> </ul> </li> <li>Average age in 2005: <ul style="list-style-type: none"> <li>Aberdeenshire – 39 (m), 41 (f)</li> </ul> </li> </ul>	<ul style="list-style-type: none"> <li>Aberdeen population figures: <ul style="list-style-type: none"> <li>2003 - 206,600</li> <li>2021 - 202,636</li> </ul> </li> <li>Average age in 2005: <ul style="list-style-type: none"> <li>Aberdeen – 38 (m), 41 (f).</li> </ul> </li> </ul>	<ul style="list-style-type: none"> <li>Approximately 2% decrease within the City, and 0.01% decrease within Aberdeenshire.</li> </ul>	<ul style="list-style-type: none"> <li></li> </ul>	<ul style="list-style-type: none"> <li>Aberdeen and Aberdeenshire Council's (2004) <i>Strategic Forecasts 2003-2021</i>: <a href="http://www.aberdeencity.gov.uk/ACCI/nmsruntime/saveasdialog.asp?IID=1720&amp;slD=332">http://www.aberdeencity.gov.uk/ACCI/nmsruntime/saveasdialog.asp?IID=1720&amp;slD=332</a></li> </ul>

Migration change	<ul style="list-style-type: none"> <li>• Migration loss 2002-05: Aberdeenshire is losing its population to Scotland.</li> <li>• Migration gain 2002-05: Aberdeenshire is gaining its population from Aberdeen and outside Scotland.</li> <li>• The relative age of those migrating to Aberdeen is 15-19 yrs; and Aberdeenshire are 0-14yrs and 30yrs plus.</li> <li>•</li> </ul>	<ul style="list-style-type: none"> <li>• Migration loss 2002-05: Aberdeen is losing its population to Aberdeenshire and outside Scotland.</li> <li>• Migration gain 2002-05: Aberdeen is gaining its population from Scotland.</li> <li>•</li> </ul>	<ul style="list-style-type: none"> <li>• The migration trend in the Aberdeenshire is slow growth to 2016 and then a slow decline thereafter.</li> <li>•</li> </ul>	<ul style="list-style-type: none"> <li>• In-migration will create greater demand for houses and services in Aberdeenshire .</li> <li>•</li> </ul>	<ul style="list-style-type: none"> <li>• Aberdeen City and Aberdeenshire Councils (2006) <i>Topic Paper: Population and household change</i></li> <li>• Register for General Scotland (2006) <i>Mid-2005 Population Estimates Scotland Population estimates by sex, age and administrative area</i>, A National Statistics publication <a href="http://www.gro-scotland.gov.uk/files/05mype-cahb-booklet.pdf">http://www.gro-scotland.gov.uk/files/05mype-cahb-booklet.pdf</a></li> </ul>
Listening and Involvement	<p>Level of perception that the Council listens genuinely to local communities</p> <ul style="list-style-type: none"> <li>• Agree (2004) – 25%</li> <li>• Agree (2006) – 18%</li> </ul> <p>Level of is involvement in the communities it serves</p> <ul style="list-style-type: none"> <li>• Agree (2006) – 28%</li> <li>• Don't know (2006) – 25%</li> <li>• Neither/Nor (2006) – 27%</li> <li>• Could do more – 70%</li> </ul>	No Comparators	Perception is worsening	<ul style="list-style-type: none"> <li>•</li> </ul>	<ul style="list-style-type: none"> <li>• The Residents' Survey published in October 2006</li> </ul>

<p>Care assessment and provision</p>	<p>% Home care clients aged 65yrs receiving personal care</p> <ul style="list-style-type: none"> <li>• 2005/2006 - 91.1%</li> <li>• 2006/2007 – 93.8%</li> </ul> <p>% Home care clients aged 65yrs receiving personal care as % of clients</p> <ul style="list-style-type: none"> <li>• Sept 06-73.7%</li> <li>• Mar 07-97.8%</li> <li>• Sept 07-75%</li> </ul> <p>Number of home care clients</p> <ul style="list-style-type: none"> <li>• Sept 06-38</li> <li>• Mar 07-46</li> <li>• Sept 07-44</li> </ul> <p>% of over 65 yr olds receiving care in the evenings/overnight</p> <ul style="list-style-type: none"> <li>• 2005/2006 – 29.5%</li> <li>• 2006/2007 –32.2%</li> </ul> <p>% of over 65 yr olds receiving care at weekends</p> <ul style="list-style-type: none"> <li>• 2005/2006 – 56.0%</li> <li>• 2006/2007 –58.2%</li> </ul>	<p>No comparators</p>	<p>Improving</p>	<p>The agreed timescale from initial contact is 14 days. The Social Work service is developing a performance management framework in which all indicators will be reviewed. Targets and tolerances will also be considered as part of this review.</p>	<ul style="list-style-type: none"> <li>• Aberdeenshire Council Monitoring Plan 2008</li> </ul>
<p>Support for young and vulnerable</p>	<p>The percentage of children/families offered/provided with a service</p> <ul style="list-style-type: none"> <li>• Sept 06-93.2%</li> <li>• Mar 07-93.8%</li> <li>• Sept 07-98.4%</li> </ul> <p>No of Children/Families</p> <ul style="list-style-type: none"> <li>• Sept 06-44</li> <li>• Mar 07-48</li> <li>• Sept 07-61</li> </ul>	<p>No comparators</p>	<p>Improving</p>	<ul style="list-style-type: none"> <li>• This can include assessment within 28 days of referral</li> </ul>	<ul style="list-style-type: none"> <li>• Aberdeenshire Council Monitoring Plan 2008</li> </ul>

School placements	<p>% of children with fewer than 3 placements during the current period looked after</p> <ul style="list-style-type: none"> <li>• Sept 06-76.5%</li> <li>• Mar 07-72.5%</li> <li>• Sept 07-75.4%</li> </ul> <p>Number of children</p> <ul style="list-style-type: none"> <li>• Sept 06-200</li> <li>• Mar 07-193</li> <li>• Sept 07-191</li> </ul>	No comparators	<p>Improving</p> <p>Over the past 18 months, the Council has consistently maintained 75% of all children/young people accommodated away from home in stable placements with only a quarter of children experiencing more than 3 changes in placement during the period of care.</p>	•	<ul style="list-style-type: none"> <li>• Aberdeenshire Council Monitoring Plan 2008</li> </ul>
Fuel Poverty Assistance	<p>In 2006/7 Aberdeenshire Council Energy Efficiency Advice Project had 305 new cases and dealt with 8,164 enquiries of which a high proportion was fuel poor households.</p> <p>SCARF Cosy Homes project targeting fuel poor had 51% of its referrals from Aberdeenshire and installed 121 energy efficiency measures. SCARF Fuel Cost Campaign for winter 2006/7 across 6 Local Authority areas including Aberdeenshire, resulted in a 49% increase in enquiries on the cost of fuel and other campaign issues.</p>	<p>The information on Scottish fuel poverty statistics is from a survey of 2004/5, which shows that between 2002 and 2004/5 the number of Scottish households in fuel poverty had increased 293,000 (13% of households) to 419,000 (18.2% of households).</p>		•	<ul style="list-style-type: none"> <li>• Aberdeenshire Council Monitoring Plan 2008</li> </ul>

<p>Care and support for homeless</p>	<p>Time taken between presentation and completion of duty by the Council for those cases assessed as homeless or potentially homeless  2005/2006 -15.3 weeks  2007/2008 - 17.6 weeks  The percentage of households in temporary accommodation in temporary bed &amp; breakfast</p> <ul style="list-style-type: none"> <li>• Sept 06-38.9%</li> <li>• Mar 07-35.4%</li> <li>• Sept 07-36.7%</li> </ul> <p>Number of households</p> <ul style="list-style-type: none"> <li>• Sept 06-226</li> <li>• Mar 07-246</li> <li>• Sept 07-248</li> </ul>	<p>Scottish average of 21 weeks.</p>	<p>No significant improvement</p>	<p>Housing availability</p>	<ul style="list-style-type: none"> <li>• Aberdeenshire Council Monitoring Plan 2008</li> </ul>
<p>Recreational and leisure facilities</p>	<p>2005/06 percentage in use (number of berths/number in use)</p> <ul style="list-style-type: none"> <li>• Summer - 103% (228/234)</li> <li>• Winter - 60% (187/112)</li> </ul> <p>2006/07 percentage in use (number of berths/number in use)</p> <ul style="list-style-type: none"> <li>• Summer -90% (326/293)</li> <li>• Winter – No data</li> </ul>	<p>No comparators</p>	<p>The percentage of berths in use was lower in 2006/07 than in the previous summer season although the actual number of berths in use is up from 234 to 293. There were fewer berths available in summer 2006 with Banff Marina closed for improvements. In summer 2007 silt movement reduced the available berths in Johnshaven harbour and the repositioning or mooring chains reduced the number of berths at Rosehearty.</p>	<ul style="list-style-type: none"> <li>•</li> </ul>	<ul style="list-style-type: none"> <li>• Aberdeenshire Council Monitoring Plan 2008</li> </ul>

Number of visitors to country parks	2006/07 March - 56000 September – 71000 2007/08 March – No data September - 70,000	The target for visitors to country parks in 2007/08 is to achieve a 1% increase on the previous year, the monthly average for 2006/07 was 66,000.	No trend	•	Aberdeenshire Council Monitoring Plan 2008
Secondary School - role and capacity	Aberdeenshire Total Role • 2006 –15,948 • 2007 –15,848 • 2008 –15,635 Total Capacity • 2006 – 16,210 • 2007 – 16,210 • 2008 – 16,210	To comparators	No significant trend	•	Aberdeenshire Council Monitoring Plan 2008
Primary School - role and capacity	Aberdeenshire Total Role • 2006 –19573 • 2007 –19267 • 2008 –19045 Total Capacity • 2006 – 24965 • 2007 – 24943 • 2008 – 24943	To comparators	No significant trend	•	Aberdeenshire Council Monitoring Plan 2008

Achievement and attainment	<p>Aberdeenshire 2006 –</p> <ul style="list-style-type: none"> <li>• top 3 local authorities in Scotland</li> <li>• 5 out of the 21 recognised measures of attainment for S4, S5 and S6;</li> <li>• top 6 in 19 of the 21 measures; and,</li> <li>• top 10 in all 21 of the measures.</li> <li>• one of the top 6 local authorities in all but one of these measures.</li> </ul>	When benchmarked against the family of comparator authorities, Aberdeenshire was first on ten of the measures, and second on the other six.	No trend	•	Aberdeenshire Council Monitoring Plan 2008
	<p>Aberdeenshire:</p> <ul style="list-style-type: none"> <li>• 96% of adult participants thought they had gained a new skill;</li> <li>• 73% of adult participants were likely to continue learning;</li> <li>• 57% of young participants felt they were more confident as a result of having joined a group;</li> <li>• 81% of adult participants said that their learning had helped them to be more active in their community.</li> </ul>	No comparators	No trend	•	<ul style="list-style-type: none"> <li>• Report by the Scrutiny &amp; Audit Committee on Community Learning and Development in Aberdeenshire (SAC Report No. 12)</li> </ul>
The number of media issues to the public (new indicator introduced April 2007)	<p>Aberdeenshire</p> <ul style="list-style-type: none"> <li>• Sept 07 -104,877 (Monthly average over six months = 104,211)</li> </ul>	No Comparators	No trend	•	Aberdeenshire Council Monitoring Plan 2008

The number of hits on the online reference database (new indicator introduced April 2007)	Aberdeenshire <ul style="list-style-type: none"> <li>Sept 07 - 1,547 (Monthly average over six months = 1,423)</li> </ul>	No Comparators	No trend	•	Aberdeenshire Council Monitoring Plan 2008
The number of hits on the ALIS online catalogue (new indicator introduced April 2007)	Aberdeenshire <ul style="list-style-type: none"> <li>Sept 07 - 112,272 (Monthly average over six months = 100,810)</li> </ul>	No Comparators	No trend	•	Aberdeenshire Council Monitoring Plan 2008
Number of visits to Aberdeenshire Arts website	Aberdeenshire <ul style="list-style-type: none"> <li>Sept 07 - 11,200 (Monthly average over six months = 10,566)</li> </ul>	No Comparators	No trend	•	Aberdeenshire Council Monitoring Plan 2008
The number of attendances at council swimming pools	Aberdeenshire Mar 07 - 384,951 Sept 07 - 376,608	No Comparators	No trend	•	Aberdeenshire Council Monitoring Plan 2008
The number of attendances at council indoor sport and recreation facilities	Aberdeenshire Mar 07 - 104,869 Sept 07 - 115,963	No Comparators	No trend	•	Aberdeenshire Council Monitoring Plan 2008



Table 7.2.9: SEA Topic: Cultural Heritage

SEA Indicator	Quantified information	Comparators and targets	Trends	Issues/constraints	Data source(s)
Scheduled Ancient Monuments	Aberdeenshire • 476	Aberdeen City- • 37	Development is putting pressure on this feature	The location of new developments will be constrained by this factor	<a href="http://www.historic-scotland.gov.uk/scheduled-monuments.pdf">http://www.historic-scotland.gov.uk/scheduled-monuments.pdf</a>
Listed Buildings	Aberdeenshire • Category A - 198 • Category B - 1608 • Category C(s) - 1906	Aberdeen City • Category A - 69 • Category B - 680 • Category C(s) - 462	No trend	New housing should take this into account	Aberdeen City and Aberdeenshire Councils (2006) <i>Topic Paper: Built Heritage</i>  Buildings at Risk Register for Scotland (Scottish Civic Trust) <a href="http://www.buildingsatrisk.org.uk/browse.asp">http://www.buildingsatrisk.org.uk/browse.asp</a> Scottish Executive (1999) <i>NPPG18: Planning and the Historic Environment</i>
Conservation Areas	Aberdeenshire • 36	Aberdeen City • 11	No trend	The location and design of developments will be constrained by this factor	<a href="http://www.aberdeencity.gov.uk/acci/web/site/Planning/SL/pla_ConservArea.asp">http://www.aberdeencity.gov.uk/acci/web/site/Planning/SL/pla_ConservArea.asp</a>  <a href="http://www.aberdeenshire.gov.uk/planning/devservices/index.asp">http://www.aberdeenshire.gov.uk/planning/devservices/index.asp</a>
Archaeological sites	Aberdeenshire • 17935	Aberdeen City • 699	Development is putting pressure on this feature	The location of new developments will be constrained by this factor	Aberdeen City and Aberdeenshire Councils (2006) <i>Topic Paper: Built Heritage</i>  Scottish Executive (1998) <i>NPPG5: Archaeology and Planning</i>

<p>Numbers of listed buildings sites at risk</p>	<ul style="list-style-type: none"> <li>• Numbers of buildings at risk</li> <li>• Aberdeenshire: 117 (6 under restoration)</li> <li>• 3% of listed buildings on the Buildings at Risk register for Aberdeenshire:</li> </ul>	<ul style="list-style-type: none"> <li>• Numbers of buildings at risk</li> <li>• Aberdeen: 10 (1 under restoration)</li> <li>• 0.62% of listed buildings on the Buildings at Risk register Aberdeen</li> </ul>	<ul style="list-style-type: none"> <li>• No trend</li> </ul>	<ul style="list-style-type: none"> <li>• Only a small number of buildings at risk are undergoing restoration.</li> <li>• The majority of the buildings at risk are in rural areas, with few undergoing restoration.</li> </ul>	<p>Aberdeen City and Aberdeenshire Councils (2006) <i>Topic Paper: Built Heritage</i></p> <p>Buildings at Risk Register for Scotland (Scottish Civic Trust) <a href="http://www.buildingsatrisk.org.uk/browse.asp">http://www.buildingsatrisk.org.uk/browse.asp</a></p> <p>Scottish Executive (1999) <i>NPPG18: Planning and the Historic Environment</i></p>
<p>Number of attendances at North East Arts Touring</p>	<p>Aberdeenshire</p> <ul style="list-style-type: none"> <li>• June 2007 - 11,900 Number of visitors to Aberdeenshire Council's museums were</li> <li>• March 2007 - 1,106, and September 2007 - 7,200</li> <li>• Directly managed Council museums achieving registration/accreditation - (11)</li> <li>• Indirectly managed Council museums achieving registration/accreditation Two-thirds (6)</li> <li>•</li> </ul>	<p>No Comparators</p>	<p>No trend</p>	<ul style="list-style-type: none"> <li>•</li> </ul>	<p>Accreditation and Registration by 'Museums, Libraries and Archives Council. panel members were very positive about cultural events in Aberdeenshire, with comments such as "it is easy for me to travel to and from events", "it is easy to find out about activities/events", "the range of activities/events is as good as elsewhere in Scotland", and "the quality of venues is as good as elsewhere in Scotland". The top three potential venues were village halls (80%), community centres (74%) and local schools or colleges (73%). The cultural and historical environment is protected: The Council runs 11 museums and 3 heritage centres, in addition there are 3,718 listed buildings</p>

					in Aberdeenshire.
No. of sites in Aberdeenshire	Aberdeenshire <ul style="list-style-type: none"> <li>• Sept 06 -17,313</li> <li>• Mar 07 - 17,511</li> <li>• Sept 07 - 17,737</li> </ul>	No Comparators	Improving	•	
No. of planning applications, etc., the Archaeology Service commented on	Aberdeenshire <ul style="list-style-type: none"> <li>• Sept 06 -41</li> <li>• Mar 07 - 49</li> <li>• Sept 07 - 55</li> </ul>	No Comparators	Improving	•	Aberdeenshire Council Monitoring Plan 2008
No. of excavations, evaluations, etc., the Archaeology Service instigated to mitigate against the loss of sites	Aberdeenshire <ul style="list-style-type: none"> <li>• Sept 06 - 27</li> <li>• Mar 07 – 24</li> <li>• Sept 07 - 31</li> </ul>	No Comparators	Improving	•	Aberdeenshire Council Monitoring Plan 2008

Table 7.2.10: SEA Topic: Landscape

SEA Indicator	Quantified information	Comparators and targets	Trends	Issues/constraints	Data source(s)
National Scenic Areas (NSA)	There is 1 NSA in Aberdeenshire occupying 43300 hectares of land and representing 6.8% of land take	There are 40 NSAs in Scotland occupying 1, 001, 800 hectares of land. This represents 12.5% of Scotland's land area.	No trend NPPG14 places strong emphasis on conserving important landscapes, and development within NSAs is unlikely unless it conforms to this national policy.	The insensitive siting and design, as well as type (e.g. dwelling(s), wind farm or quarry) of any new development may adversely affect nationally designated landscapes in some areas of Aberdeenshire. Housing development will put pressure on the resource	SNH (2004) <i>SNH Facts &amp; Figures 2003/2004</i> . <i>Battleby</i> : SNH
Townscape quality	<ul style="list-style-type: none"> <li>• 36 conservation areas in Aberdeenshire.</li> <li>• 7 Aberdeenshire Towns Partnerships (ATP) in Ellon, Banff and Macduff, Fraserburgh, Huntly, Inverurie, Peterhead and Stonehaven have develop plans to maintain and enhance the continued social, economic and environmental vitality of these settlements.</li> </ul>	<ul style="list-style-type: none"> <li>• 11 conservation areas in Aberdeen City</li> <li>• 6 regeneration masterplans are being drafted in the City</li> </ul>	<ul style="list-style-type: none"> <li>• The majority of the departures in Aberdeenshire have been approved against structure plan Policy 20 (Built and cultural environment), mostly for replacing old-fashioned windows and doors with the modern equivalent replacement.</li> </ul>	<ul style="list-style-type: none"> <li>• PAN52 aims to encourage local councils and other public/private bodies to help reinforce the character and identity of small towns by restoring, enhancing, improving and rehabilitating the best and worst areas of these settlements.</li> </ul>	<ul style="list-style-type: none"> <li>• Aberdeenshire Towns Partnership <a href="http://www.atap.org.uk/home.htm">http://www.atap.org.uk/home.htm</a></li> <li>• Aberdeen City: Community Planning Regeneration Masterplans (2006/7) <a href="http://www.communityplanningaberdeen.org.uk/Web/Site/Internet/RegenerationMasterplans.asp">http://www.communityplanningaberdeen.org.uk/Web/Site/Internet/RegenerationMasterplans.asp</a></li> <li>• Scottish Executive (1997) <i>PAN 52: Planning in small Towns</i></li> </ul>
Landscape setting	Aberdeenshire landscape characteristics from mountain to sea- comprising Cairngorm mountains and	<ul style="list-style-type: none"> <li>• Aberdeen's landscape provides a strategic setting for the City, imbuing it with a particular sense of place and character.</li> </ul>	<ul style="list-style-type: none"> <li>• Historically featuring some native woodlands, these areas of indigenous trees have all but gone now leaving a</li> </ul>	Strategic planning objectives for Aberdeenshire will constrain how land is development. They seek:  To further integrate landscape	<ul style="list-style-type: none"> <li>• Planning and Environmental Services, Aberdeenshire Council</li> </ul>

	<p>outliers form the rugged and often snow covered core of Aberdeenshire, and extend from the Cairngorm central massif into the main areas of the region.</p> <p>Moorland plateaux fringes the mountain areas of Aberdeenshire and is located on relatively high ground, featuring open expanses of smoothly rounded, typically heather clad or wild grassland areas, often punctuated by peat lands.</p> <p>The highland glens are typically steep sided head of valley features for the wider lower valleys and to a degree define the boundaries of the upper moorland and mountain areas. The glens provide the beginnings for many of the watercourses of Aberdeenshire.</p> <p>The straths and valleys lead from the glens as they widen out, and provide the setting for the main rivers of the region, typified by Strath Don and the Dee Valley.</p>	<p>There are landscapes and features around and within the City – the beach links and promenade, the cliffs at Cove, Brimmond and Elrick Hills, and the Dee and Don Valleys, to name just a few – which are prime examples of the local environments which together create a landscape setting for the City that anyone can readily recognise. In effect, it is this landscape setting which helps to make Aberdeen an attractive place to live, work and play.</p>	<p>relatively desolate landscape. In more recent times some commercial forests have been planted in parts of these areas introducing blocks of spruce plantation to the moors.</p> <ul style="list-style-type: none"> <li>• These remote often small-scale landscape features define the slopes and shape of the surrounding higher ground, providing the physical link to the lower straths and valleys of Aberdeenshire. The glens are typically predominately heather or rough grassland landscapes often featuring some native woodlands as well as commercial forestry plantations towards their valley floor. Small scale agricultural fields and farm steadings also start to feature in the lower areas of some of the glens .</li> <li>• The landscape of</li> </ul>	<p>into regional planning policies, including environmental, cultural, agricultural and economic policies, as well as any other policies with possible direct or indirect impact on the landscape.</p> <p>To accommodate future development without adversely altering the basic valued landscape character of the areas concerned.</p> <p>To recognise landscape as an essential component of people’s surroundings that contributes directly to their quality of life and identity at an individual and community level. The landscape is a fundamental component of cultural and natural heritage and needs to be appropriately conserved to form the basis of a quality environment.</p> <p>To develop and implement landscape policies aimed at landscape planning and protection management through the adoption of specific measures.</p> <p>To establish procedures for the participation of all parties with</p>	
--	---	---	---	---	--

	<p>The agricultural heartlands lie beyond the straths and valleys and cover the lower lying areas of Aberdeenshire.</p> <p>Coastal cliffs, beaches and links duneland define Aberdeenshire's coast beyond the farmland.</p> <p>Often associated with these beaches is the links dune land forming a transition between the coastal area and inland agricultural land. The links and duneland can include relatively stable coastal grasslands as well as more dynamic coastal dune systems often featuring rapidly shifting sand systems.</p>		<p>these areas features pastoral and arable farming often set in a framework of commercial forest plantation and broadleaf woodland. The straths and valleys are relatively well populated usually featuring farmsteads and rural private properties, and are often the location for the main road corridors of the area as well as a string of hamlets and villages. Many of the settlements have been consciously developed and designed by local estates in or around the 19<sup>th</sup> century, featuring architecture typical of the period.</p>	<p>an interest in landscape issues with an interest in the development and implementation of strategic landscape policies.</p>	
Landscape character		<ul style="list-style-type: none"> <li>Aberdeen City has Open Farmland (52 km<sup>2</sup>); Wooded Farmland (26 km2); Valley (20 km2); Hill (20 km2); Coast (7</li> </ul>	<ul style="list-style-type: none"> <li>NPPG 14 states that particular care is needed when considering proposals for new development at the edge of</li> </ul>	<p>The inappropriate scale and insensitive siting of enabling development may adversely affect landscape characteristics (e.g. changing it's landscape character type,</p>	<ul style="list-style-type: none"> <li>Scottish Executive (1999) <i>NPPG14: Natural Heritage</i></li> <li>Scottish Executive (1994) PAN44: <i>Capacity for housing in</i></li> </ul>

		<p>km2); and Urban area (60 km2).</p> <ul style="list-style-type: none"> <li>The four Landscape Character Assessments that cover the North East provides a brief overview of past land use practices and discusses potential land uses for existing landscapes.</li> </ul>	<p>settlements or in open countryside.</p> <ul style="list-style-type: none"> <li>PAN44: <i>Capacity for housing in the landscape</i></li> </ul>	<p>not respecting local topography/contours).</p>	<p><i>the landscape.</i></p> <ul style="list-style-type: none"> <li>Scottish Natural Heritage (1997) <i>National programme of landscape character assessment: Banff and Buchan</i>, Review No 37.</li> <li>Scottish Natural Heritage (1998) <i>South and Central Aberdeenshire: landscape character assessment</i>, Review No 102.</li> <li>Scottish Natural Heritage (1996) <i>Landscape character assessment of Aberdeen</i>, Review No 80</li> <li></li> </ul>
Gardens and Designed Landscapes (GDL)	0.9 % of Aberdeenshire land area accommodates 32 GDLs which occupy 5745 hectares of land	Aberdeen City – 1 GDL 0.83% of Scotland's area accommodates 386 HGDLs which occupy 66765 hectares of land	No trend	Housing development will put pressure on the resource	SNH (2004) <i>SNH Facts &amp; Figures 2003/2004</i> . <i>Battleby</i> : SNH

Table 7.2.11: SEA Topic: Material Assets

SEA Indicator	Quantified information	Comparators and targets	Trends	Issues/constraints	Data source(s)
Number of vacant dwellings	<ul style="list-style-type: none"> <li>Number of vacant dwellings and second homes in 2005:</li> <li>Aberdeenshire: 4,8681 (decrease of 15% since 2001) and 4.6% of the total housing stock.</li> <li>In Aberdeenshire there are 749 (5%) vacant commercial properties.</li> <li>Between 2004 and 2005 the number of vacant (and second homes) in Aberdeenshire fell by 250 (-5.1%)</li> </ul>	<ul style="list-style-type: none"> <li>Number of vacant dwellings and second homes in 2005:</li> <li>Aberdeen: 5,574 (5.1% increase since 2001) and 5.2% of the total housing stock.</li> <li>Between 2004 and 2005 the number of vacant (and second homes) in Aberdeen increase by 315 (6%).</li> </ul>	<ul style="list-style-type: none"> <li>The number of vacant dwellings in Aberdeen is increasing, while in Aberdeenshire the figure is falling.</li> </ul>	<ul style="list-style-type: none"> <li>Population increases into Aberdeenshire is causing the difference between the City and the shire</li> </ul>	<ul style="list-style-type: none"> <li>General Register for Scotland: Vacant dwellings and second homes (2001-2005) <a href="http://www.gro-scotland.gov.uk/files/he-05-table3.pdf">http://www.gro-scotland.gov.uk/files/he-05-table3.pdf</a></li> </ul>
Number of degraded buildings	<ul style="list-style-type: none"> <li>Number of dwellings in disrepair in 2002:</li> <li>Aberdeenshire: 63,000 (70%) against 27,000 that are not in disrepair.</li> <li>Number of dwellings where their disrepair is classified as "urgent" in 2002:</li> <li>Aberdeenshire: 28%</li> <li>Number of dwellings (by tenure) failing to meet the Scottish Housing Quality Standard in 2002 in:</li> <li>Aberdeenshire:</li> <li>rented (LA/HA) - 50%</li> </ul>	<ul style="list-style-type: none"> <li>Number of dwellings in disrepair in 2002:</li> <li>Aberdeen: 76,000 (81%) against 18,000 (19%) that are not in disrepair.</li> <li>Number of dwellings where their disrepair is classified as "urgent" in 2002:</li> <li>Aberdeen: 43%</li> <li>Number of dwellings (by tenure) failing to meet the Scottish Housing Quality Standard in 2002 in:</li> <li>Aberdeen:</li> <li>rented (LA/HA) - 60%</li> <li>owner-occupied/</li> </ul>	<ul style="list-style-type: none"> <li>Both Aberdeen city and Aberdeenshire have lower rates of stock failure than the Scottish average, although levels are still quite high.</li> <li>Failure rates are slightly higher in the private sector than in the social rented sector.</li> </ul>	<ul style="list-style-type: none"> <li></li> </ul>	<ul style="list-style-type: none"> <li>Aberdeen City and Aberdeenshire Councils (2006) <i>Topic Paper: Characteristics of the Housing Stock</i></li> <li>Communities Scotland (2004) <i>Scottish House Condition Survey 2002</i>, <a href="http://www.shcs.gov.uk/pdfs/SHQ_Sreport.pdf#sear">http://www.shcs.gov.uk/pdfs/SHQ_Sreport.pdf#sear</a></li> </ul>



	<ul style="list-style-type: none"> <li>owner-occupied/</li> <li>private rented – 55%</li> <li>(HA=Housing Association)</li> </ul>	<ul style="list-style-type: none"> <li>private rented – 64%</li> <li>(HA=Housing Association)</li> </ul>			<a href="#">ch=%22Scottish%20House%20condition%20survey%20SHQS%22</a> <a href="#">2</a>
Derelict and vacant land (and buildings)	<ul style="list-style-type: none"> <li>In Aberdeenshire:</li> <li>21 sites totalling 9ha is derelict; and</li> <li>25 sites totalling 27ha is vacant.</li> <li>In Aberdeenshire the total area of derelict and urban vacant land has declined significantly from 190ha in 1996 to 36ha in 2005.</li> </ul>	<ul style="list-style-type: none"> <li>In Aberdeen:</li> <li>18 sites measuring 72ha is derelict;</li> <li>32 sites measuring 116ha is vacant; &amp;</li> <li>combined represents 2% of the total vacant and derelict land recorded in Scotland.</li> <li>Since 1996, the total area of derelict and urban vacant land in Aberdeen has remained steady (2005 figures stand at 180ha).</li> </ul>	<ul style="list-style-type: none"> <li>The area of derelict and urban vacant land in Aberdeenshire has decreased significantly</li> </ul>	<ul style="list-style-type: none"> <li></li> </ul>	<ul style="list-style-type: none"> <li>Scottish Executive (2006) <i>Statistical Bulletin: Scottish Vacant Derelict and Derelict Land Survey 2005</i>  <a href="http://www.scotland.gov.uk/Resource/Doc/91002/0021846.pdf">http://www.scotland.gov.uk/Resource/Doc/91002/0021846.pdf</a></li> </ul>

Existing flood defences	<ul style="list-style-type: none"> <li>• In Aberdeenshire, flood studies have been carried out in Huntly, Inverurie, Roseheart, Auchnagatt, Fyvie, Maryculter (Mill Inn), Alford and Aboyne.</li> <li>• Emergency works had to be carried out on Stonehaven's seawall foundations as coastal erosion caused part of it to collapse.</li> </ul>	<ul style="list-style-type: none"> <li>•</li> </ul>	<ul style="list-style-type: none"> <li>• Flood defence schemes will progressively be affected by soil/sand erosion from increasing rainfall and storm events, which will affect their stability and effectiveness. As a result, there will be a need to increase the maintenance these defences, and possibly relocate them.</li> </ul>	<ul style="list-style-type: none"> <li>• The predicted rise in storm events and winter precipitation is likely to increase soil/sand erosion from the wind and rain/water, which may prevent flood defence schemes functioning properly and result in their failure (e.g. collapse).</li> </ul>	<ul style="list-style-type: none"> <li>• Aberdeenshire Council (2005) <i>Flooding in Aberdeenshire: Fifth Biennial Report</i> <a href="http://www.aberdeenshire.gov.uk/flooding/report/5biennial.pdf">http://www.aberdeenshire.gov.uk/flooding/report/5biennial.pdf</a></li> <li>• Halcrow (2006) <i>Aberdeen Bay Coastal Defence Scheme, Aberdeen city Council Project Appraisal Report</i>, Aberdeen City Council</li> <li>•</li> </ul>
-------------------------	--	---	---	---	---

Existing pumping stations and sewage works	<ul style="list-style-type: none"> <li>Aberdeenshire has significant constraints throughout most of the area, with the exception of a handful of settlements, including Westhill and Insch</li> </ul>	<ul style="list-style-type: none"> <li>In 2003, it was identified that the cost of overcoming development constraints in Scotland is £435.1m, of which 89% was identified for the removal of waste water constraints, and 11% for water supply constraints.</li> <li>The North East accounts for 5% of the Scottish total (£18.1m), which is mostly required in Aberdeenshire.</li> </ul>	<ul style="list-style-type: none"> <li>Data used for this assessment can only be considered as a draft, and will be subject to change in relation to Scottish Water's and SEPA's understanding of asset performance and development potential identified by planning authorities.</li> </ul>	<ul style="list-style-type: none"> <li>There is a significant wastewater constraint issue in most of Aberdeenshire, which may have adverse effects on water quality.</li> </ul>	<ul style="list-style-type: none"> <li>Aberdeen City and Aberdeenshire Councils (2006) <i>Topic Paper: Development Constraints (Water and Waste)</i></li> <li>Scottish Water (2006) <i>Strategic Asset Capacity and Development Plan</i>  <a href="http://www.scottishwater.co.uk/portal/page?_pageid=627,4099564&amp;_dad=portal&amp;_schema=PORTAL">http://www.scottishwater.co.uk/portal/page?_pageid=627,4099564&amp;_dad=portal&amp;_schema=PORTAL</a></li> </ul>
Water treatment works	<ul style="list-style-type: none"> <li>With the exception of areas in and around Peterhead, Banchory, Ellon, and Torphins, Aberdeenshire require significant works upgrades.</li> <li>Turriff and Banff and Macduff have been identified with severe water supply constraints.</li> </ul>			<ul style="list-style-type: none"> <li>There is a significant water supply constraint throughout most of the North East, with the exception of a handful of settlements.</li> </ul>	
Supply of affordable	<ul style="list-style-type: none"> <li>Aberdeenshire: Net requirement of 915</li> </ul>	<ul style="list-style-type: none"> <li>The demand for affordable housing per annum in</li> </ul>	<ul style="list-style-type: none"> <li>The supply affordable homes in the North</li> </ul>	<ul style="list-style-type: none"> <li>There is a need to review the proportion</li> </ul>	<ul style="list-style-type: none"> <li>*Aberdeen Council and</li> </ul>

housing	<p>affordable housing units (this represents two-thirds of the estimated new build in the area).</p> <ul style="list-style-type: none"> <li>•</li> </ul>	<p>Aberdeen is a net requirement of 897 affordable housing units;</p>	<p>East are not meeting the demand, even with additional Scottish Executive grants.</p> <ul style="list-style-type: none"> <li>• The main shortfall is for one bedroom and larger (4 plus) bedroom dwellings.</li> </ul>	<p>of affordable housing in new build in both Aberdeen City and Aberdeenshire.</p>	<p>Communities Scotland (2005) <i>2004 Housing Needs Assessment</i>,</p> <ul style="list-style-type: none"> <li>• Aberdeenshire Council and Communities Scotland (2005) <i>2004 Housing Needs Assessment, Executive Summary</i>, Fordham Research  <a href="http://www.aberdeenshire.gov.uk/councilhousing/reports/aberdeenshire_hna_final_summary.pdf">http://www.aberdeenshire.gov.uk/councilhousing/reports/aberdeenshire_hna_final_summary.pdf</a></li> </ul>
---------	--	---	--	--	---

Supply of holiday homes	<ul style="list-style-type: none"> <li>• % of second/holiday homes:</li> <li>• Aberdeenshire (excluding the coast)</li> <li>• 1 to 5%: southern Aberdeenshire (e.g. Mid Deeside and the Mearns area), and coastal areas excluding Peterhead 5 to 10%: Donside Valley</li> <li>• 10-20%: Portsoy coast (Banff) and Aberdeen</li> <li>• 20%+: Upper Deeside (Cairngorms)</li> <li>• In Aberdeenshire second/holiday homes account for 2% of the housing stock.</li> </ul>	<ul style="list-style-type: none"> <li>• % of second/holiday homes:</li> <li>• 0 to 1%: Aberdeen, central and northern</li> <li>• In Scottish rural areas, the proportion of housing stock accounted for by second/holiday homes is over seven times greater than in urban areas.</li> </ul>	<ul style="list-style-type: none"> <li>• In Aberdeenshire, only a small fraction of the total housing stock accounted by second/holiday homes.</li> <li>•</li> </ul>	<ul style="list-style-type: none"> <li>• The number of second homes rented out by oil companies could be sold off as the oil sector declines.</li> <li>• A shortage of holiday homes will adversely affect the tourist trade in Aberdeenshire's most popular areas.</li> </ul>	<ul style="list-style-type: none"> <li>• Bank of Scotland House Price Database; ONS <a href="http://www.hbosplc.com/economy/includes/30-07-05FTBsPricedOutofScottishCountryside.doc">http://www.hbosplc.com/economy/includes/30-07-05FTBsPricedOutofScottishCountryside.doc</a></li> <li>• PRECiS (2005) <i>No.70 The impact of second and holiday homes on rural communities in Scotland,</i></li> </ul>
Access to good quality affordable housing	<p>Percentage of vacant housing properties offered to new tenants within less than 10 working days</p> <ul style="list-style-type: none"> <li>• Sept 06 -87.9 %</li> <li>• Mar 07 -97.7 %</li> <li>• Sept 07 -93 %</li> </ul>	<ul style="list-style-type: none"> <li>• No Comparators</li> </ul>	Improving	Funding	<p>The Residents' Survey published in October 2006 reported that 54% of those responding were satisfied with Housing services, this compares with 47% in 2004.</p>
Proportion of building materials from sustainable sources	<ul style="list-style-type: none"> <li>• In Aberdeenshire, work on increasing the energy efficiency and use of materials from sustainable sources in new dwellings</li> </ul>	<ul style="list-style-type: none"> <li>•</li> </ul>	<ul style="list-style-type: none"> <li>• Implementation of</li> <li>• SPP1 - sustainable development; PAN 67 - layout, design and materials to be used,</li> </ul>		<ul style="list-style-type: none"> <li>• Scottish Executive (2003) <i>SPP1: The Planning System</i></li> <li>• Scottish</li> </ul>

	<p>are being researched in a project entitled Index 21. The outcome of this work will be incorporated into the next local development plan.</p> <ul style="list-style-type: none"> <li>Although Aberdeenshire councils encourage and support the use of buildings constructed of sustainable materials, there are only a few examples of this actually happening.</li> </ul>		and to a lesser extent in SPP2 and SPP3 will improve the situation.		<p>Executive (2003) <i>PAN 67: Housing Quality</i></p> <ul style="list-style-type: none"> <li>Scottish Executive (2003) <i>SPP2: Economic Development</i></li> <li>Scottish Executive (2003) <i>SPP3: Planning for housing</i></li> <li>Aberdeen Sustainability Research Trust: <i>Index 21</i> (<a href="http://www.index21.org.uk">www.index21.org.uk</a>)</li> </ul>
Number of new businesses	<p>VAT registered businesses 2005 - 9,980 2008 - 10,110. Rate of businesses formation- 48 VAT registrations per 10,000 working age people in Aberdeenshire</p>	Rate of businesses formation in Scotland- 36 VAT registrations per 10,000 working age people	There were increases in the manufacturing, construction, hotels/restaurants, transport/ communications, finance, real estate/renting/ business activities, and education/ health sectors		<ul style="list-style-type: none"> <li>Aberdeenshire Council Monitoring Plan 2008</li> </ul>
Business survival rate	<p>% of business formed in 2001 still trading 3 years later</p> <ul style="list-style-type: none"> <li>Aberdeenshire –75%</li> </ul>	<p>% of business formed in 2001 still trading 3 years later</p> <ul style="list-style-type: none"> <li>Aberdeen City – 75%</li> <li>Scotland – 71%</li> </ul>	<ul style="list-style-type: none"> <li></li> </ul>		<ul style="list-style-type: none"> <li>Aberdeenshire Council Monitoring Plan 2008</li> </ul>
Supporting facilities for enterprises	<p>Fully occupied council-owned serviced industrial sites - 41 Fully occupied council-owned business centres – 12</p>	No comparators	Improving	The Council work with Rural Partnerships to help them win contracts to	<ul style="list-style-type: none"> <li>Aberdeenshire Council Monitoring Plan 2008</li> </ul>

	<p>No. of contracts being won by rural partnerships, for the delivery of local services, from Aberdeenshire Council</p> <ul style="list-style-type: none"> <li>• Sept 06 -8</li> <li>• Mar 07-11</li> <li>• Sept 07-14</li> </ul>			<p>carry out work for different services of the Council to support the development of viable and sustainable local rural partnerships.</p>	
Employment land supply	<p>The level of Established Employment Land Supply  2006 - 395 hectares  2007 - 393 hectares  Potential industrial land</p> <ul style="list-style-type: none"> <li>• 8 ha land at Portlethen added to the Moss-side Audit. There is additional land at Formartine added in line with the Aberdeenshire Local Plan at Balmedie (Eigie Farm South);</li> <li>• 2 further 150 ha sites pending production of development briefs to be used at the former RAF base at Edzell Woods</li> <li>• 5.1 ha land at Rosehall in Formartine</li> </ul>	No Comparators	<p>The future trend will see improvements</p> <p>The Council actively provides further industrial land at MacDuff, Fraserburgh, Ellon and Balmedie.</p>	<p>A reduction of 2 hectares (-0.5%). This is predominantly because of land being developed across Aberdeenshire but in particular at Inverurie and Kintore.</p>	<ul style="list-style-type: none"> <li>• Aberdeenshire Council Monitoring Plan 2008</li> </ul>
Perception of Council contribution to the economy	<p>Proportion of people believing that the Council has a positive impact on the economy of the area</p> <ul style="list-style-type: none"> <li>• 2004-35%</li> <li>• 2006 - 44%</li> </ul>	No comparators	Improving		<ul style="list-style-type: none"> <li>• The Residents' Survey published in October 2006</li> </ul>

<p>Perception of transport service and road</p>	<p>Frequency of public transport (2006)</p> <ul style="list-style-type: none"> <li>• Poor / Very Poor - 23%</li> <li>• Good /Very Good –77%</li> </ul> <p>Cost and convenience of public transport (2006)</p> <ul style="list-style-type: none"> <li>• Poor / Very Poor -24%</li> <li>• Good /Very Good – 76%</li> </ul> <p>Dissatisfaction with winter gritting/snow clearing and road maintenance</p> <ul style="list-style-type: none"> <li>• Fewer residents</li> </ul> <p>Fundamental road surfaces in good condition' (2007)</p> <ul style="list-style-type: none"> <li>• Good/Very Good – 62%</li> </ul> <p>Top three aspects of road maintenance -</p> <p>Repair undertaken in good time</p> <ul style="list-style-type: none"> <li>• Very Good/Good – 67%</li> <li>• Very Poor /Poor - 27%</li> </ul> <p>Winter maintenance</p> <ul style="list-style-type: none"> <li>• Very Good/Good – 63%</li> <li>• Very Poor /Poor - 34%</li> </ul> <p>Repairs of good quality</p> <ul style="list-style-type: none"> <li>• Very Good/Good – 67%</li> <li>• Very Poor /Poor - 28%</li> </ul>	<p>The percentage of roads identified by national condition survey, which should be considered for maintenance treatment, is an annual figure. The current percentage stand at 39%, which is slightly higher than the previous year's figure of 33.2%. In 2006/07, the Council completed 6% more road resurfacing and surface dressing than planned. The roads in Aberdeenshire are currently rated as 3<sup>rd</sup> best in Scotland.</p>	<ul style="list-style-type: none"> <li>•</li> </ul>		<ul style="list-style-type: none"> <li>• Residents' Survey published in October 2006</li> <li>•</li> <li>•</li> <li>• Residents' Research published in November 2007</li> </ul>
<p>Quality of life</p>	<p>In 2006 Aberdeenshire – 3<sup>rd</sup> best quality of life in Scotland's 32 local authorities. In 2007 Aberdeenshire - best quality of life in Scotland's 32</p>	<p>No comparators</p>	<p>No trend</p>	<p>The factors taken into account included employment, the housing market, environment, education, and health.</p>	<ul style="list-style-type: none"> <li>• 2007 Quality of Life Study commissioned by the Bank of Scotland.</li> </ul>



	local authorities.			Aberdeenshire was found to have 81% employment, one of the highest life expectancies and low crime rates. A Bank of Scotland spokesperson noted "A strong economy, along with good schools and a low crime rate have helped Aberdeenshire to become the area with the best quality of life in Scotland in 2007".	
Efficient provision of Council services	<p>Administration of housing and council tax benefits</p> <p>Processing time (days)</p> <ul style="list-style-type: none"> <li>• Sept 06 – 31</li> <li>• Mar 07- 34</li> <li>• Sept 07 – 36</li> </ul> <p>Percent accurate</p> <ul style="list-style-type: none"> <li>• Sept 06 – 97.6%</li> <li>• Mar 07- 96.8%</li> <li>• Sept 07 – 98.4%</li> </ul> <p>Percentage of consumer complaints dealt with within 14 days</p> <ul style="list-style-type: none"> <li>• 2005/06- 60.8%</li> <li>• 2006/07 - 75.3%</li> </ul>	No comparators	No trend		<ul style="list-style-type: none"> <li>• Aberdeenshire Council Monitoring Plan 2008</li> </ul>
	<p>Gross Internal Floor Area (GIA) of Operational Buildings in satisfactory condition</p> <ul style="list-style-type: none"> <li>• 2006/07-34%</li> </ul> <p>Percentage of operational buildings suitable for their</p>	No comparators	No trend		<ul style="list-style-type: none"> <li>• Aberdeenshire Council Monitoring Plan 2008</li> </ul>

	<p>current use</p> <ul style="list-style-type: none"> <li>• 2006/07. 40.3%</li> </ul>				
High standard of financial management	<p>Cost of Council Tax collection (per household)</p> <ul style="list-style-type: none"> <li>• 2006/07-£11.68</li> <li>• 2005/06-£11.24</li> </ul> <p>Percentage of Council Tax collected in year</p> <ul style="list-style-type: none"> <li>• 2006/07-95.9%</li> <li>• 2005/06-95.8%</li> </ul> <p>Cost of business rates collection</p> <ul style="list-style-type: none"> <li>• 2006/07-£32</li> <li>• 2005/06-£30.89</li> </ul> <p>Percentage of business rates collected</p> <ul style="list-style-type: none"> <li>• 2006/07-97.5%</li> <li>• 2005/06-96.9%</li> </ul> <p>Percentage of invoices paid within 30 days of receipt</p> <ul style="list-style-type: none"> <li>• 2006/07-88.3%</li> <li>• 2005/06-87%</li> </ul>	No comparators	No trend		<ul style="list-style-type: none"> <li>• Aberdeenshire Council Monitoring Plan 2008</li> </ul>
Planning permission determined in accordance with agreed standards.	<p>% of householder applications determined within 2 months</p> <ul style="list-style-type: none"> <li>• Sept 06 - 73% (139)</li> <li>• Mar 07 - 70% (176)</li> <li>• Sept 07- 46% (193)</li> </ul> <p>% of non-householder applications determined within 2 months</p> <ul style="list-style-type: none"> <li>• Sept 06 - 34% (222)</li> <li>• Mar 07 - 32% (229)</li> <li>• Sept 07-46%193</li> </ul>	No comparators	No trend		<ul style="list-style-type: none"> <li>• Aberdeenshire Council Monitoring Plan 2008</li> </ul>

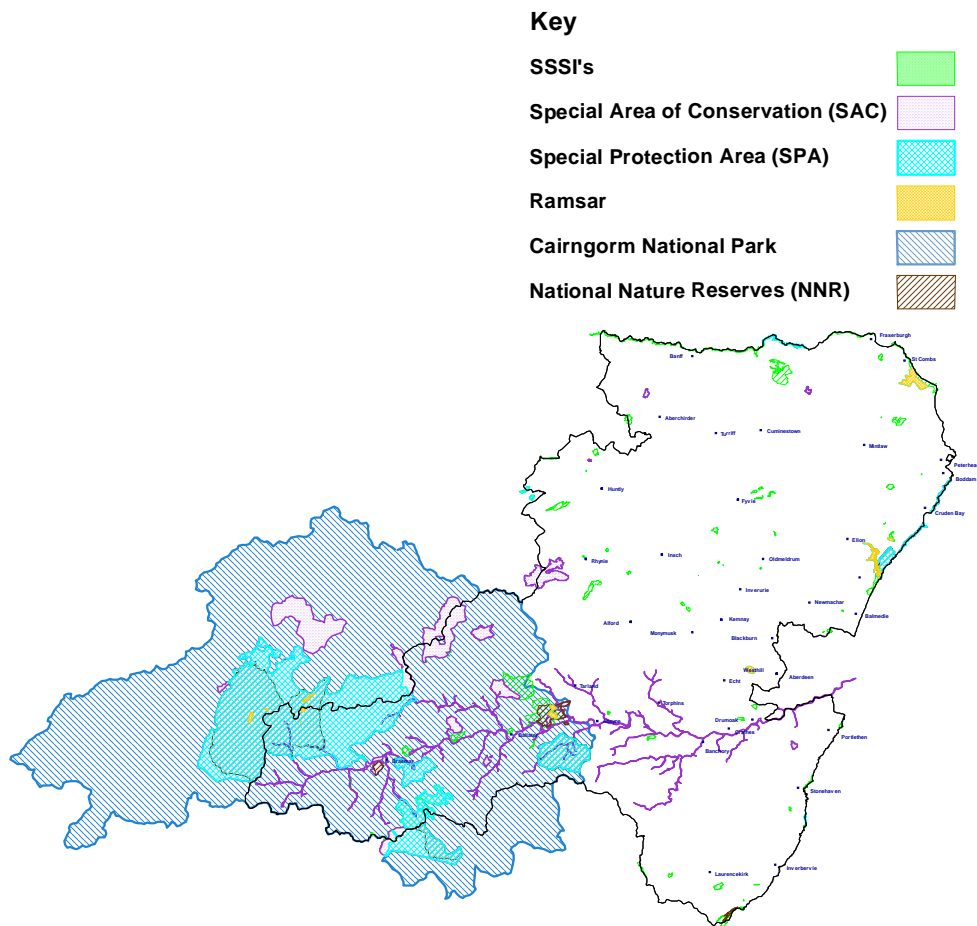
Planning Gains	Incoming funds (Planning Gains) <ul style="list-style-type: none"> <li>• Sept 06- £1,479,620</li> <li>• Mar 07 -£972,281</li> <li>• Sept 07-£1,294,485</li> </ul>	No comparators	No trend		<ul style="list-style-type: none"> <li>• Data from the Planning Gain Service shows a total of incoming funds of £3.7m for the 18 month period covered by the baseline report</li> </ul>
----------------	---	----------------	----------	--	---

### Appendix 7.3 Designations

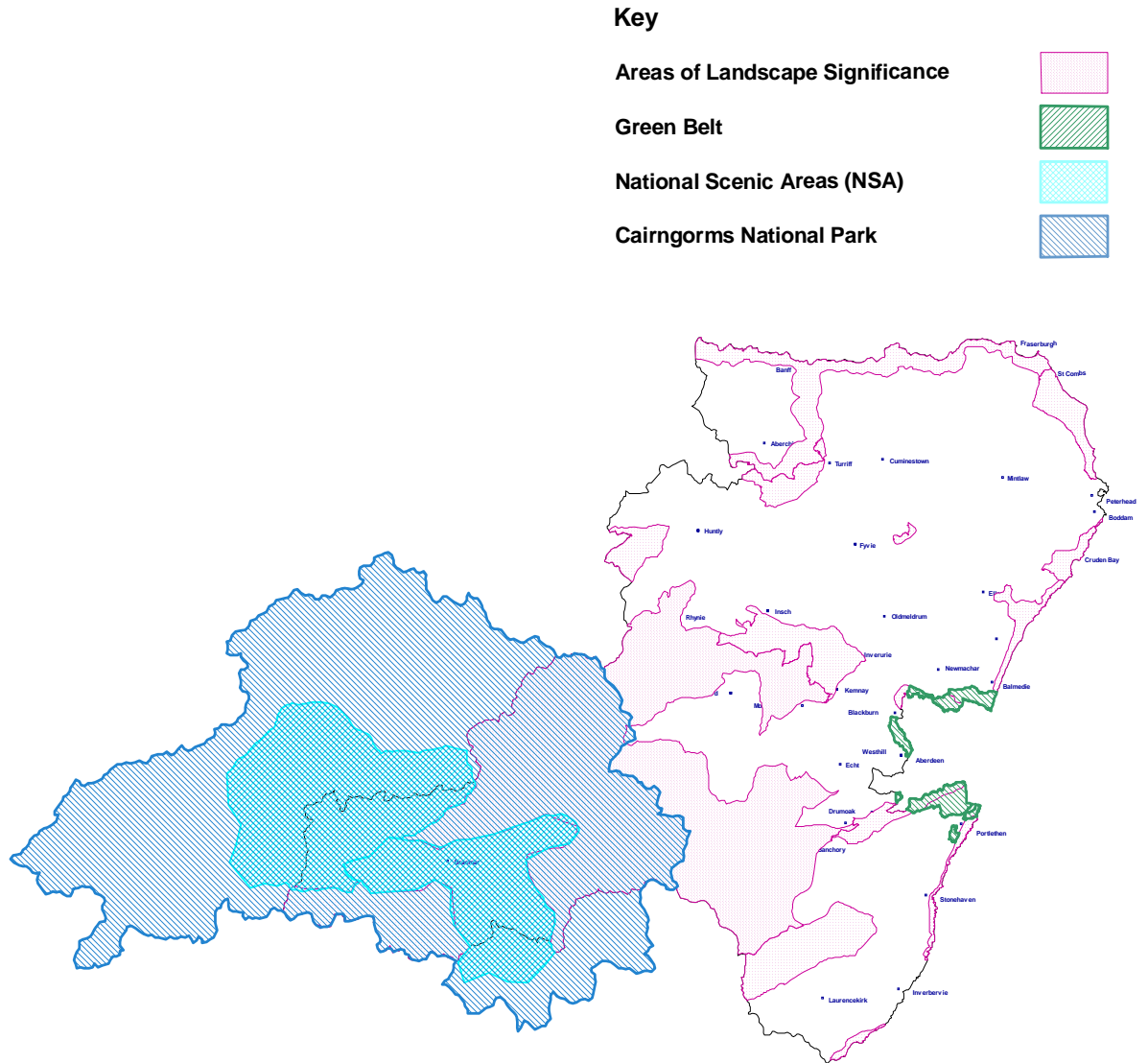
**Table 7.3.1: International and national natural heritage designations**

Issues/Areas	SEA Issues
Buchan Ness to Collieston (SAC & SPA) – Peterhead & Ellon	Biodiversity
River Dee (SAC) – Water Abstraction for all areas	Biodiversity
Garron Point (cSAC) - Stonehaven	Biodiversity
Muir of Dinnet (SAC & Ramsar) - Aboyne	Biodiversity
Dinnet of Oakwood (SAC & SPA - Aboyne	Biodiversity
Mortlach Moss (SAC)– Huntly	Biodiversity
Red Moss of Netherley (SAC) – Portlethen & Newtonhill	Biodiversity
Glen Tanar (SPA) Aboyne & Banchory	Biodiversity
Loch of Skene (SPA & Ramsar) - Close to the City/Recreational Impact	Biodiversity
Loch of Strathbeg (SPA & Ramsar) – Fraserburgh, Mintlaw & Peterhead	Biodiversity
Troup, Pennan and Lion's Head (SPA) Banff, Macduff, Fraserburgh	Biodiversity
Ythan Estuary (SPA & Ramsar) - Ellon	Biodiversity
Sands of Forvie and Meikle Loch (SPA & Ramsar) - Ellon	Biodiversity

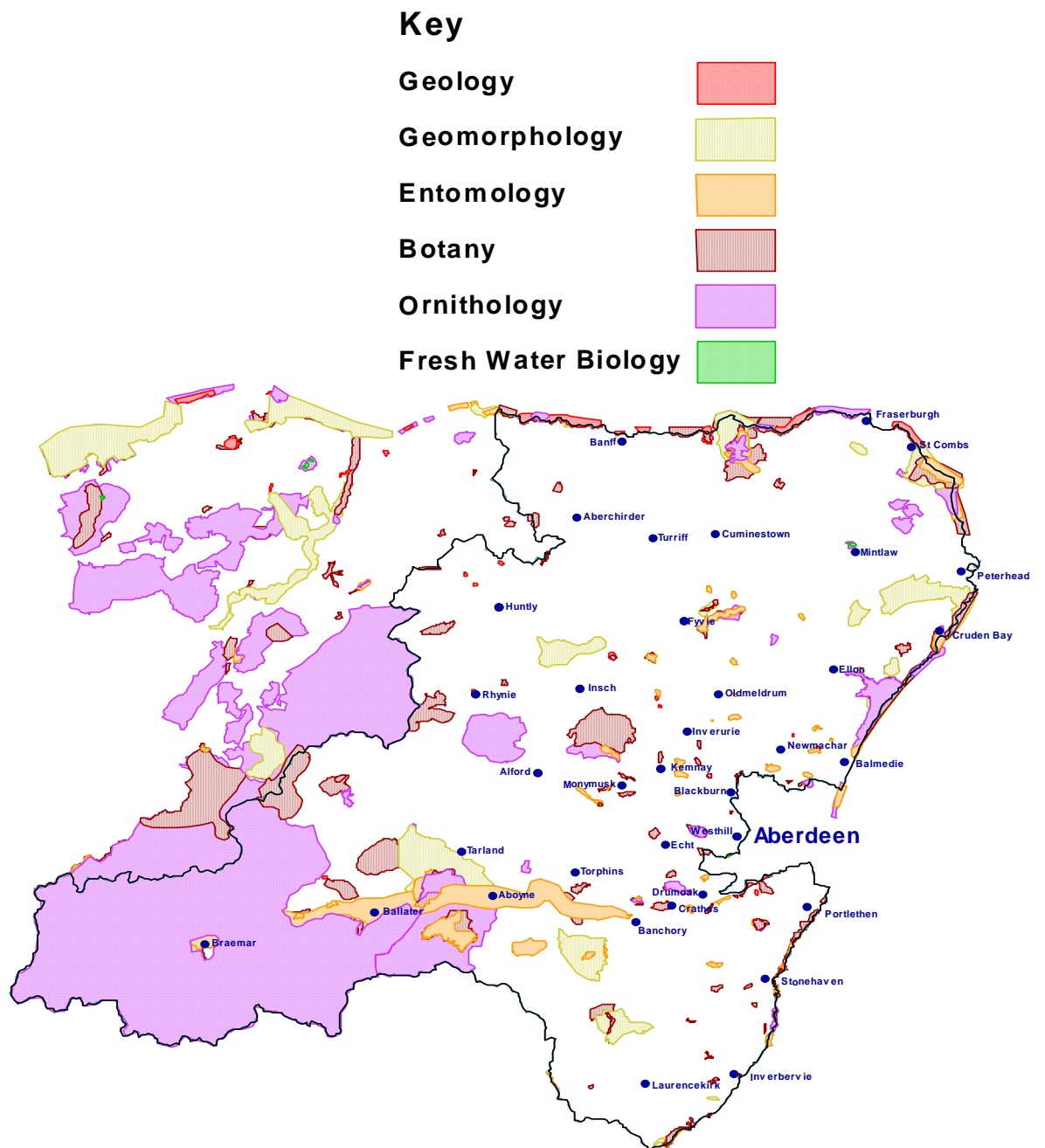
**Figure 7.3 1: International and national natural heritage designations**



**Figure 7.3.2: Landscape designations: Areas of Landscape Significance, Cairngorms National Park, and National Scenic Areas**



**Figure 7.3.3: Local natural heritage designations: Sites of Environmentally Sensitive Areas / Sites of Interest to Natural Science**



**Table 7.3.2: The main settlements likely to be affected by fluvial and coastal flooding (up to the 2080s)**

SEA Topic	Quantified information		
Climatic Factors	Settlement	Flood risk	
		Fluvial flooding constraints (1 in 200 year flood event)	Tidal/coastal flooding constraints
	Significantly constrained		
	Fraserburgh	To the <b>west</b> and <b>southeast</b> , including part of the settlement and Fraserburgh Golf Course.	<b>Harbour</b> area (jetties only, not the buildings).
	Turriff	To the <b>south</b> , <b>southwest</b> and <b>northwest</b> from the river Deveron, Burn of Knockiemill, Burn of Dulerstone, and Burn of turriff.	N/A
	Longside	To the <b>north</b> , <b>east</b> , and <b>southeast</b> from the South Ugie Water and Burn of Cairngall.	N/A
	Huntly	To the <b>north</b> , from the River Deveron, which already affects part of the settlement, and to the <b>east</b> and <b>southeast</b> from the river Bogie and Thains Burn.	N/A
	Kintore	To the <b>north</b> , <b>northeast</b> and <b>southeast</b> from the Loch Burn, Bridgealehouse Burn, River Don, and Tuach Burn	N/A
	Banchory	To the <b>south</b> from the River Dee affecting part of the settlement immediately adjacent to the river, to the <b>northeast</b> and <b>east</b> from Burn of Bennie.	N/A
	Newtonhill	To the <b>north</b> and <b>northwest</b> from the Burn of Elrick and to the <b>south</b> from Pheppie Burn.	None.
	Moderately constrained		
	Peterhead	To the <b>north</b> and <b>northwest</b> from the River Ugie and Collie Burn, and to the <b>south</b> from a drainage ditch, which affects the Dales Industrial Estate and a works factory on South Road.	<b>Harbour</b> area, affecting buildings in South Bay Harbour, Bridge street, and the main piers.
	Inverurie	To the <b>north</b> and <b>west</b> from the River Urie, which includes part of the Inverurie Paper Mill, and to the <b>south</b> , from the river Don, which affects part of Port Elphinstone.	N/A

	Stonehaven	To the <b>north</b> and <b>northeast</b> from the Cowie Water (including Mineralwell Park) and to the <b>south</b> from Carron Water.	To the <b>northeast</b> encompassing all of Cowie, the caravan park, and the leisure area along Beach Road, and to the <b>southeast</b> including part of the harbour and the settlement (e.g. High Street)
	Bielside	To the <b>south</b> from the River Dee.	N/A
	Milltimber	To the <b>south</b> from the River Dee.	N/A
	Peterculter	To the <b>south</b> from the River Dee.	N/A
	Slightly constrained		
	Banff	To the <b>south</b> from the River Deveron, affecting Collenard Park and Dew Haugh.	To the <b>southeast</b> , affecting Duff Royal Golf Course, and part of the settlement to the <b>east</b> (including part of Bridge Street, Maple View, the football grounds and Princes Royal Park).
	Macduff	To the <b>south</b> , from Gelly Burn.	None.
	Mintlaw	To the <b>west</b> and <b>south</b> from South Ugie Water and the <b>northwest</b> (Pitfour Lake).	N/A
	Ellon	To the <b>south</b> from the River Ythan, and to the <b>east</b> , from a drainage ditch.	N/A
	Alford	To the <b>north</b> from the River Don and a drainage ditch in Baldyvin Wood.	N/A
	Laurencekirk	To the <b>west</b> and <b>northwest</b> from Luther Water and Ducat Water.	N/A
	Balmedie	To the <b>northeast</b> from Eigie Burn.	None.
	Potterton	To the <b>south</b> from Blackdog Burn.	N/A

Source: SEPA Draft Second generation Indicative flood risk maps (January 2006)



**Figure 7.3.4:** Gardens and Designed Landscapes, Scheduled Ancient Monuments & Listed Buildings

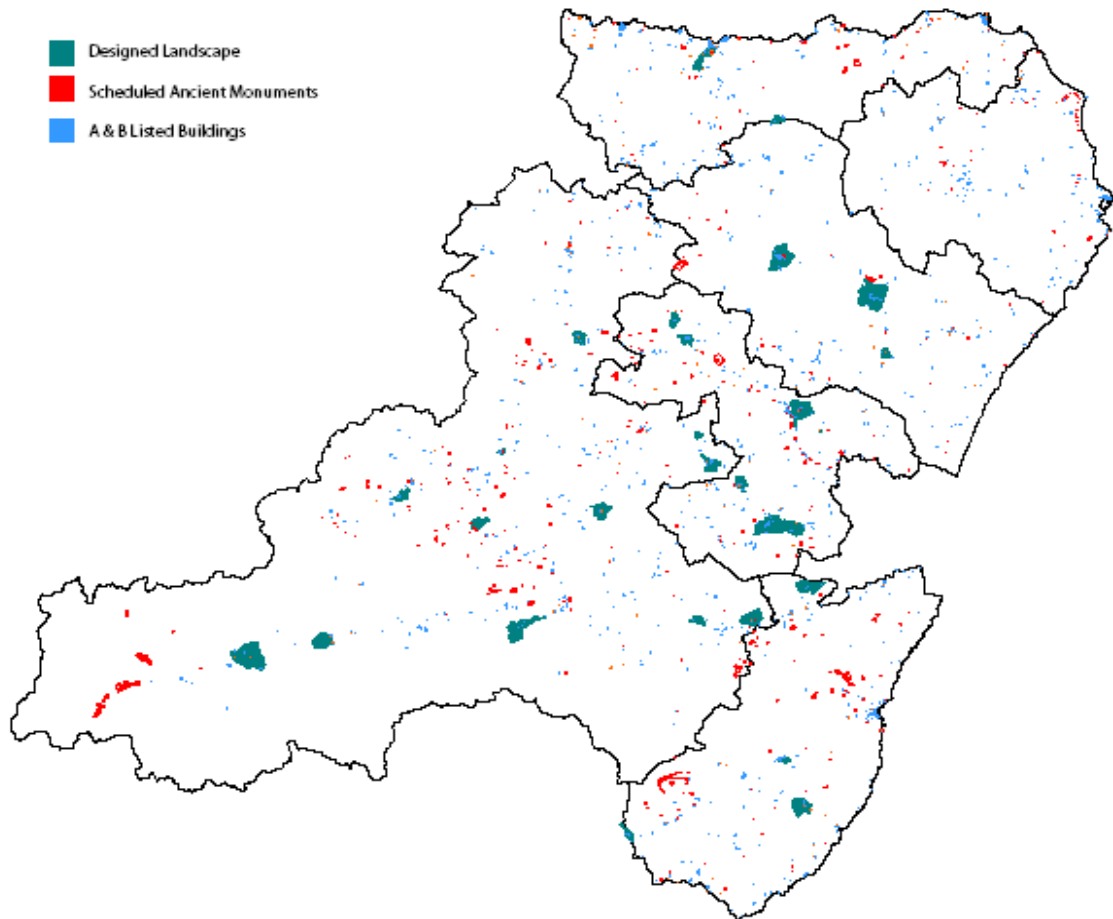
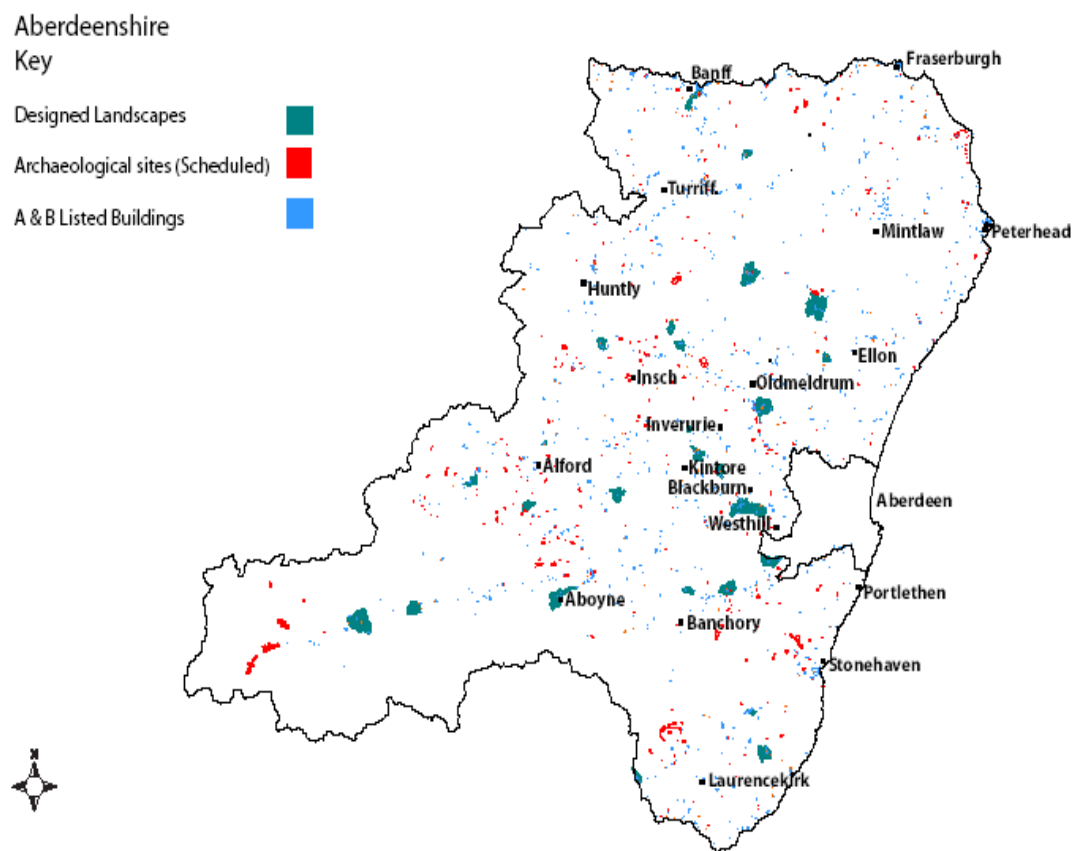
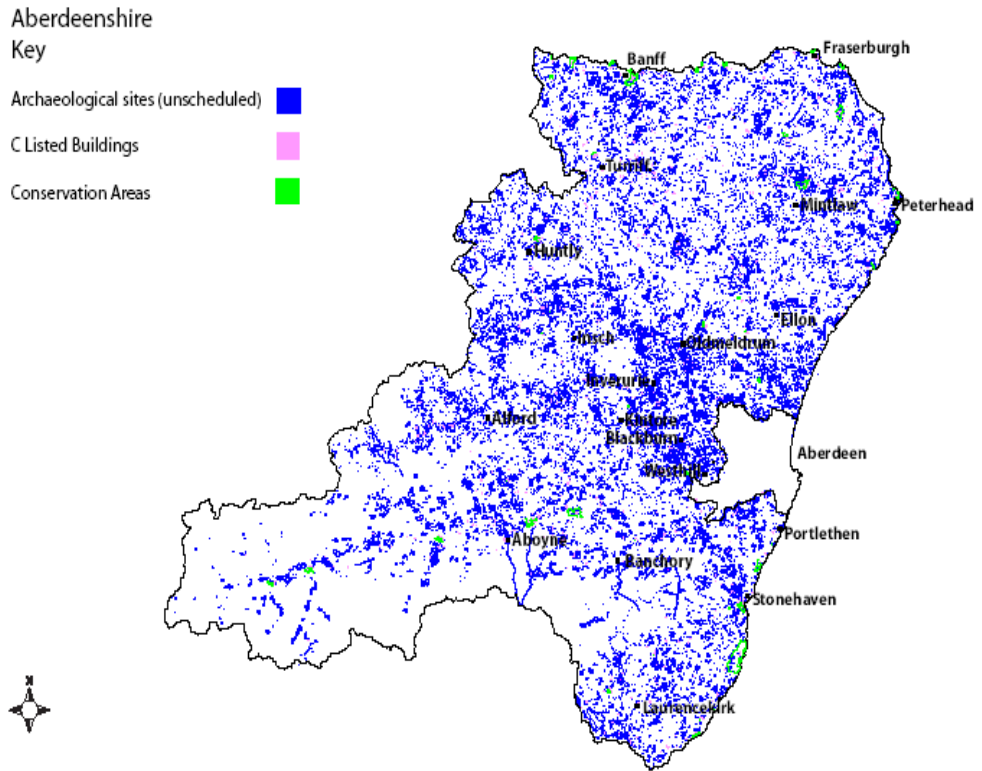


Figure 7.3.5: Designated Landscapes, Archaeological & Listed Buildings



Category C(S) Listed Buildings

**Figure 7.3.6: Archaeological Sites (unscheduled), Category C (S) Listed Buildings & Conservation Areas**



## Appendix 7.4 Summary of Environmental Problems from the Baseline Data.

**Table 7.4.1: Significant environmental problems: air quality**

SEA Topic	Significant environmental problems
Air	No significant effects near waste management facilities or quarries, but there is an issue of odour from sewerage works near development in Inverurie.

**Table 7.4.2: Significant environmental problems: water quality**

SEA Topic	Significant environmental problems
Water	A decline and mortalities in the number of species of international importance if water levels fall. (For example Salmon deaths in the river Dee during low flows in 2004)
	Need to reduce water abstraction by incorporating water efficient technologies into new development (e.g. industrial and domestic) in light of the predicted decrease in summer rainfall.
	A decrease in summer precipitation may lead to a decline in ground water levels in upland areas and reduce the likelihood of new development proposals in these areas.
	Future development may put a constraint on maintaining ground water and river levels.
	53.1km of water courses in the North East are classified as poor or seriously polluted as a result of poor chemistry and biology quality.
	A build-up of nitrates from diffuse pollution within the River Ythan catchment is adversely affecting species that live in the mud flats of the river mouth, which is an internationally designated natural heritage site.
	Peterhead Power Station is likely to be contributing to the poor water quality.
	In the Aberdeenshire the main cause of poor quality coastline is the result of sewage effluent being released untreated.
	Major impact both on the sand dune erosion, wildlife and the enjoyment of other beach users from motorised vehicles.

**Table 7.4.3: Significant environmental problems: soil quality**

SEA Topic	Significant environmental problems
Soil quality	There are 5,900 potentially contaminated sites recorded in Aberdeenshire These include several hundred high-risk sites such as landfill and gasworks.
	Contaminated land places financial and technological constraints on development. These constraints may dictate the type of development: the feasibility of remedial works may determine that a site is only suitable for industrial use; the cost of remedial works may determine that high-density housing is the only viable economic option.
	Contaminated land impacts the water environment, i.e. ground surface and coastal waters, and the wider environment including for instance local ecology.
	Potential loss of prime agricultural land from climate change – precautionary approach may need to be applied in certain areas (e.g. on prime agricultural land near flood plains, along the coast, and on land of the highest quality).

	Not enough sites for recycling or composting biodegradable municipal waste (large, medium or small scale) to help the local authorities achieve their recycling and landfill targets.
	Coastal erosion mostly where there are no rocks or coastal defences.
	Increase silting of rivers from fluvial flooding.
	Increase in soil erosion from wind and water, which is exacerbated by bad land use practices, such as locating tracks/access roads on steep/ upland ground.

**Table 7.4.4: Significant environmental problems: biodiversity**

SEA Topic	Significant environmental problems
Biodiversity	Native species and habitats are increasing, and the Aberdeenshire BAP is meeting the UK BAP targets, but UK priority species and habitats are still declining and require rigorous protection and enhancement.
	Implementation of the NE BAPs is the key issue to enhancing biodiversity.
	Threat of Alien Species effecting water quality and ecological status of the rivers. Native species and habitats are increasing, and the NE BAP is meeting the UK BAP targets, but UK priority species and habitats are still declining and require rigorous protection and enhancement.
	The significance and purpose of Special Areas of Conservation (SACs) mean that development in or adjacent to them, such as the River Dee SAC may cumulatively prevent the objectives of these designations being met, and may prevent new development being developed.
	Indirect impact of development on designated sites that are affecting their water table, and therefore the quality of wetland habitats.
	Impact from large-scale leisure and recreation uses.
	Increase of access to designated sites could be damaging to some sites.
	Indirect impacts of development on non-designated sites.
	Large-scale schemes around edge of towns are placing significant development pressure on unprotected open spaces.
	There is significant development pressure for new houses along the coast.
	Fragmented habitats/ open space networks/ wildlife corridors may affect less mobile species from migrating and/or adapting to climate change.
	Need to enhance and augment habitats to avoid their decline within settlements.
	Risk of increasing population near sensitive natural heritage areas.
	Extensive use of land, and cumulative impact is resulting in the loss of biodiversity.

**Table 7.4.5: Significant environmental problems: climatic factors**

SEA Topic	Significant environmental problems
Climatic factors	High energy dependence on fossil fuels to provide heat and electricity.
	High energy dependence on fossil fuels for transportation.
	Lack of appropriate locations identified for renewable energy technologies.
	The current layout of low density housing does not reduce energy use (e.g. reducing wind chill, maximising solar gain).

	Few properties incorporate in their design resilience to extreme climate and weather conditions.
	Materials with high CO <sub>2</sub> levels are still increasingly popular (e.g. concrete and tarmac).
	Sea defensive walls may be inadequate as sea levels rise.
	Rise in soil erosion from storm events, which will create a greater need for SuDS, and an increase their water holding capacity.
	Rising precipitation and storms will increase fluvial flooding (e.g. 1 in 200 year flood event), which will restrict where new development can be located for some settlements.
	The number of properties at risk from inland fluvial flooding is low, but local flood defensive schemes will still be required.
	Rise in precipitation during the winter months and increase in storms will result in the need for SuDS to prevent pluvial flooding in urban areas.
	Aberdeen consumes more natural resources per person than any other Scottish city and has the largest global footprint in Scotland, which cannot be sustained in the long-term.
	Fragmented habitats resulting from development and changes in the climate may affect less mobile species from migrating and/or adapting to changes in the environment.
	Need to promote appropriate native species in new development schemes to enhance existing biodiversity and preventing the spread of non-native species.
	Increasing need for service provision throughout the year (e.g. as flood events are predicted to increase during winter seasons).

**Table 7.4.6: Significant environmental problems: human health**

SEA Topic	Significant environmental problems
Human health	Need for larger areas of open spaces, including civic or town parks.
	Poor access to services in rural areas.
	Centralisation of service provision has and will continue to affect marginalised areas.
	Pockets of deprivation through low job opportunities and income could be adversely affecting people's mental health in northern Aberdeenshire.
	There will still be a need for a significant proportion of new housing to be larger properties.
	.

**Table 7.4.7: Significant environmental problems: population**

SEA Topic	Significant environmental problems
Population	Increasing number of households is creating more demand for housing (and land).
	The need for more development land is placing pressure on or near sensitive natural heritage areas.
	The growing age of the head of the household may result in more homes needed for their needs (e.g. bungalows or special needs dwellings).
	Aging population will create demand for certain types of houses (e.g. bungalows and services (increasing the need for more land) and care homes.
	In-migration will create greater demand for houses and services in Aberdeenshire.
	Possible need for services catering for 'non-Scotland' migrants, especially if from overseas (e.g. language and cultural issues/differences).
	Retiral 'stealth' in-migration may affect housing and service provision in Aberdeenshire (i.e. an increase need for).

**Table 7.4.8: Significant environmental problems: cultural heritage**

SEA Topic	Significant environmental problems
Cultural heritage	Although only a small percentage of the listed buildings in the North East are on the Buildings at Risk Register, the area has one of the highest numbers of properties at risk.
	Only a small number of buildings at risk are undergoing restoration in the North East.
	The majority of the buildings at risk are in rural areas, with few undergoing restoration.
	Poorly designed buildings, especially for the disabled, elderly and children.
	Issue of conflicting requirements when ensuring the accessibility of existing buildings.
	Development adversely impacting on a community's or settlement's 'sense of place' (e.g. historical perspective).
	Safeguarding building functionality (e.g. use, access and space), which is not always considered.
	Poor design when incorporating modern materials.
	Cumulative impact of proposals, which alone may not affect the conservation designation, but cumulatively affect it's overall objective.
	Loss of unknown and locally known architectural remains from new development and other practices, vandalism and coastal erosion.
	Adverse impacts on the setting of listed buildings and archaeological remains from new developments.

**Table 7.4.9 Significant environmental problems: landscape**

SEA Topic	Significant environmental problems
Landscape	The insensitive siting and design, as well as type (e.g. dwelling(s), wind farm or quarry) of new development.
	The siting and design of new developments are individually and cumulatively adversely affecting designated landscapes.
	The individual or cumulative impact of dwelling houses may adversely be affecting the purpose of landscape designations, e.g. by affecting the coastal and landscape characteristics of Areas of Landscape Significance.
	The insensitive siting and design of new developments are individually and cumulatively adversely affecting: <ul style="list-style-type: none"> <li>○ the setting of settlements; and</li> <li>○ townscapes (e.g. conservation areas).</li> </ul>
	There is an increased need to: <ul style="list-style-type: none"> <li>○ assess a settlement's key features(s);</li> <li>○ reinforcing a sense of place; and</li> <li>○ involving local communities.</li> </ul>
	The inappropriate scale and insensitive siting of enabling development is adversely affecting landscape characteristics (e.g. changing it's landscape character type, not respecting local topography/contours).
	New development not fitting in with the landscape's capacity to absorb further developments (e.g. design, layout and sense of place) – need to promote suitable development capacity.



**Table 7.4.10: Significant environmental problems: material assets**

SEA Topic	Significant environmental problems
Material assets	
	More than half of the housing stock in the Aberdeenshire is failing to meet the Scottish Housing Quality Standard.
	More retrofitting of dwellings is required to bring them back into habitable use.
	Works have been identified in the Aberdeenshire to ensure that properties are safeguarded from flooding.
	Need to ensure that: <ul style="list-style-type: none"> <li>○ new development will not increase the probability of flooding elsewhere;</li> <li>○ development is not sited in an area at risk from fluvial or coastal flooding; and</li> <li>○ existing and new urban drainage systems will not flood properties (especially as storm events are predicted to increase).</li> </ul>
	Predicted rise in sea level may result in existing flood defences being inadequate.
	The predicted rise in storm events and winter precipitation is likely to increase soil/sand erosion from the wind and rain/water, which may prevent existing flood defence schemes functioning properly and result in their failure (e.g. collapse).
	There is a significant wastewater constraint issue in most of Aberdeenshire.
	There is a significant water supply constraint throughout most of the North East, with the exception of a handful of settlements.
	There is a significant shortfall of affordable housing in Aberdeenshire, especially in one bedroom and 4 plus bedroom dwellings.
The lack of holiday/second homes will increase house prices as dwellings that would normally have been bought to live in are bought for the purpose of being a used as a second/ holiday home.	
A shortage of holiday/second homes will adversely affect the tourist trade in Aberdeenshire's most popular areas.	
Very few new developments (e.g. dwellings, schools, offices etc) are using sustainable materials in the Aberdeenshire.	